

CERTIFICATE OF LOCATION OF GOVERNMENT CORNER

SOUTH QUARTER Corner of Section 34, Township 38, Range 24, 4TH P.M.

STATE OF MINNESOTA, County of KANABEC

At the corner location shown on the sketch:
ISANTI COUNTY CAST IRON MONUMENT

Kanabec County U.S. Survey Feet Coordinates
NAD 1983, HARN 1996 Adjustment
Obtained by RTK GPS Observation

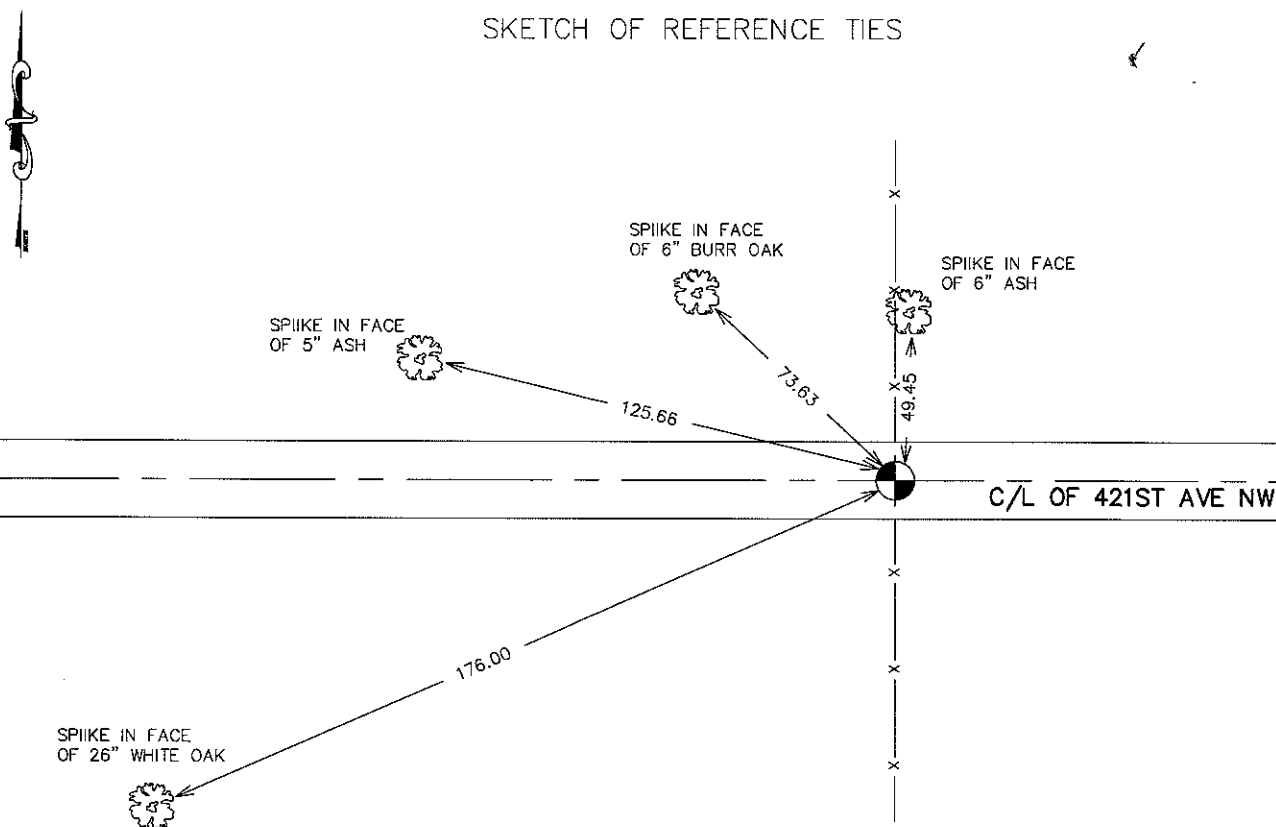
Northing= 100627.90

Easting= 393426.40

Note: NAD 1983, HARN 1996 Adjustment
coordinates are NOT compatible with
NAD 1983 coordinates

Note: 1 Meter=3937/1200 U.S. Survey Feet

SKETCH OF REFERENCE TIES



Statement of evidence relative to this corner location is on back of page.

I hereby certify that this document and the data contained herein was prepared by me or under my direct supervision.

Ernest Rud
Signature

4-26-2010
Date

Registration No. 9808

Land Surveyor, Professional Engineer

County Surveyor, County Engineer

OFFICE OF THE COUNTY RECORDER

County of _____

I hereby certify that this document was filed in the County Recorder's office at _____ M. on the _____ day of _____ A.D., 20____

County Recorder _____

BY _____ Deputy

DOCUMENT NO. _____

S 1/4 CORNER, SEC. 34, T38, R24

STATEMENT OF EVIDENCE

THE ORIGINAL GOVERNMENT POST WAS SET ON SEPTEMBER 14, 1849 AND 2 BEARING TREES ESTABLISHED:

14" PINE, S75°W @ 31 LINKS

14" BURR OAK, S85°E @ 24 LINKS

NO VISIBLE EVIDENCE FOR CORNER POST OR BEARING TREES REMAIN TODAY.

IN BOOK 2 OF 2, PAGE ? A SURVEY IS RECORDED DATED DECEMBER 20, 1901 BY JOHN NELSON. AT THAT TIME THE S 1/4 CORNER WAS NOTED AS BEING A GOOD GOVERNMENT CORNER AND HE ESTABLISHED A TIE TO A 14" BASSWOOD, N11°45'E @ 0.86 CHAINS. THIS TIE NO LONGER REMAINS.

IN NOVEMBER 1999, DON HANSEN SET A CAST IRON MONUMENT ON THE CENTERLINE OF A ROAD AND AT FENCES RUNNING NORTH AND SOUTH. DON USED THIS POSITION FOR ISANTI COUNTY RIGHT OF WAY PLATS NO. 8 & 9. THIS POSITION FITS WITHIN 6 FEET OF JOHN NELSON'S MEASUREMENT TO THE SW CORNER OF SEC. 34.

WE ACCEPTED THIS POSITION AND ESTABLISHED KANABEC COUNTY COORDINATES ON THIS MONUMENT.