

# CERTIFICATE OF LOCATION OF GOVERNMENT CORNER

SOUTHEAST Corner of Section 33, Township 38, Range 24, 4TH P.M.  
 STATE OF MINNESOTA, County of KANABEC

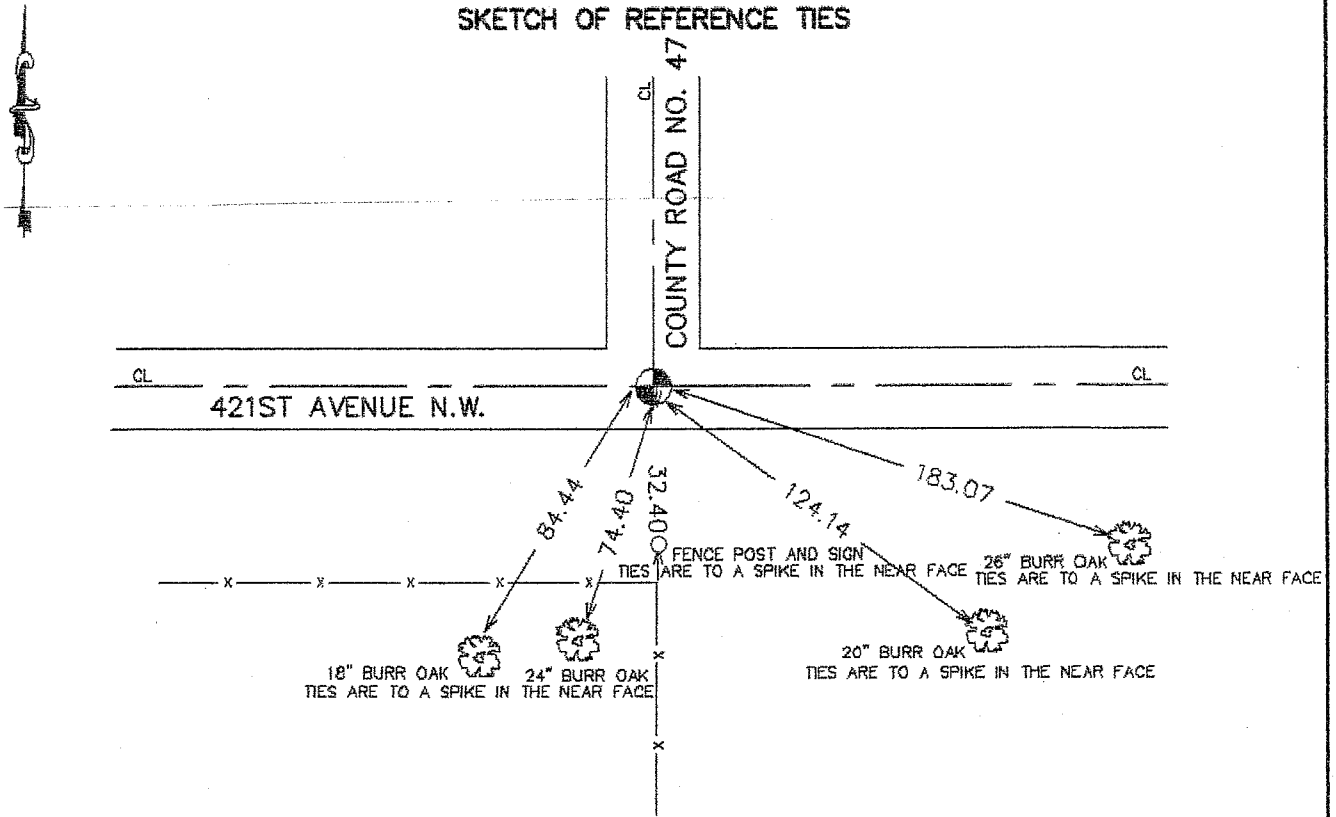
At the corner location shown on the sketch:  
 On 04/08/2003 Found a Cast Iron Monument.

Kanabec County U.S. Survey Feet Coordinates  
 NAD 1983, HARN 1996 Adjustment  
 Obtained by RTK GPS Observation

Northing= 100629.233  
 Easting= 390806.745

Note: NAD 1983, HARN 1996 Adjustment  
 coordinates are NOT compatible with  
 NAD 1983 coordinates  
 Note: 1 Meter=39.37/1200 U.S. Survey Feet

## SKETCH OF REFERENCE TIES



Statement of evidence relative to this corner location is on back of page.

I hereby certify that this document and the data contained herein was prepared by me or under my direct supervision.

Ernest J. Rud  
 Signature

7-8-2003  
 Date

Registration No. 9808

Land Surveyor,  Professional Engineer  
 County Surveyor,  County Engineer

## OFFICE OF THE COUNTY RECORDER

County of \_\_\_\_\_

I hereby certify that this document was filed in the County Recorder's office at \_\_\_\_\_ M. on the \_\_\_\_\_ day of \_\_\_\_\_ A.D., 20\_\_\_\_

County Recorder \_\_\_\_\_  
 BY \_\_\_\_\_ Deputy

DOCUMENT NO. \_\_\_\_\_

## STATEMENT OF EVIDENCE

### FRON ISANTI COUNTY

According to Book B of Survey Records, page 139, on file in the office of the Isanti County Recorder, a survey by A.W. Holm, surveyor, involving Section 4, Township 37, Range 24, dated February 4 to 6, 1909, noted "John Nelson, Kanabec County Surveyor, established the Northeast corner of Sectio 4".

On November 11, 1989, we excavated and found a sandstone monument 0.4 feet below the road surface. We lowered the stone monument to allow for a cast iron monument to be set above it and took reference ties. According to local resident—Nelson—lived southeast of the corner—His dad placed stone with "X" on top over the old wood corner post.

On November 5, 1996, we set an Isanti County cast iron monument over the stone monument—set from reference ties and took additional reference ties.