

# CERTIFICATE OF LOCATION OF GOVERNMENT CORNER

SOUTH QUARTER Corner of Section 33, Township 38, Range 24, 4TH P.M.

STATE OF MINNESOTA, County of KANABEC

At the corner location shown on the sketch:  
On 04/08/2003 Found a Cast Iron Monument.

*Established Kanabec Coordinates on monument.*

Kanabec County U.S. Survey Feet Coordinates  
NAD 1983, HARN 1996 Adjustment  
Obtained by RTK GPS Observation

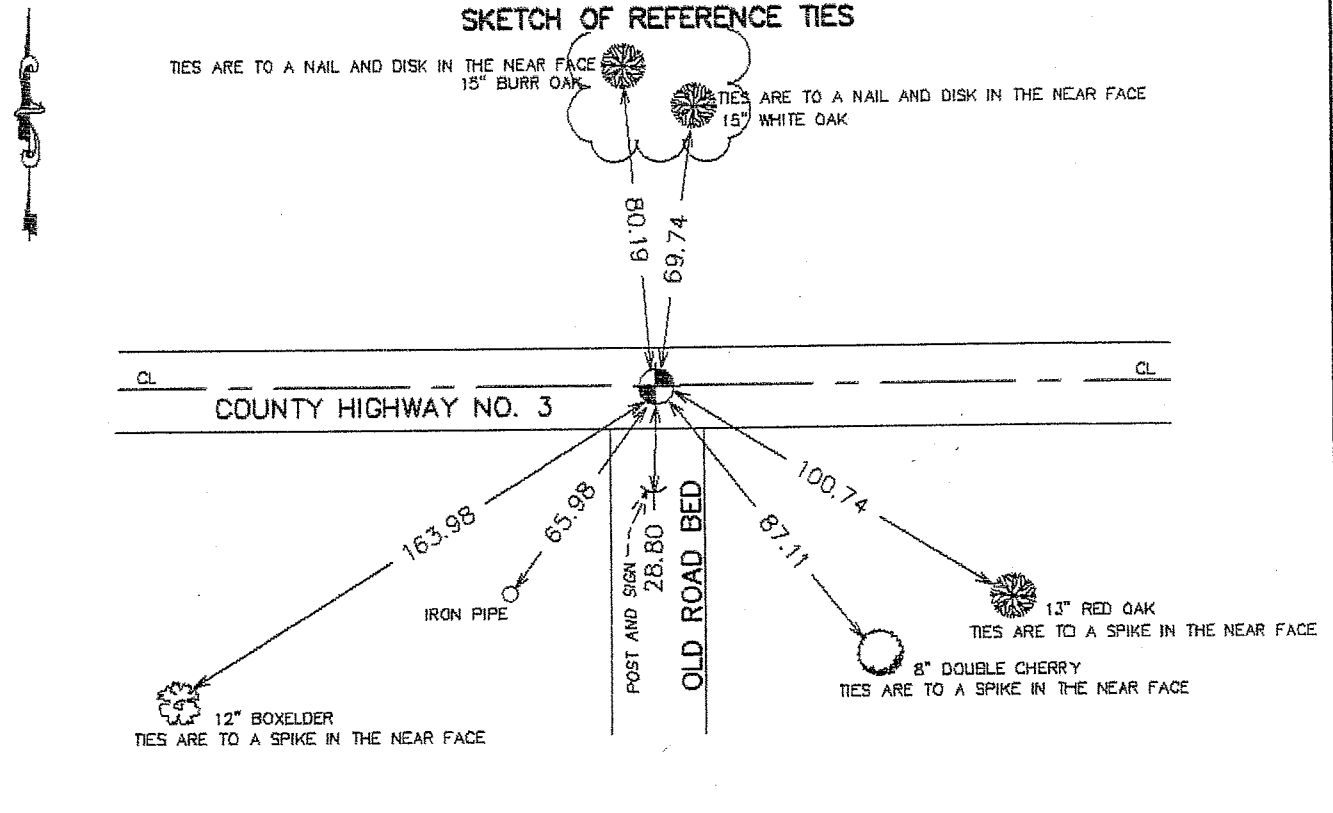
Northing= 100633.190

Easting= 388174.075

Note: NAD 1983, HARN 1996 Adjustment  
coordinates are NOT compatible with  
NAD 1983 coordinates

Note: 1 Meter=3937/1200 U.S. Survey Feet

### SKETCH OF REFERENCE TIES



Statement of evidence relative to this corner location is on back of page.

I hereby certify that this document and the data contained herein was prepared by me or under my direct supervision.

*Ernest J. Rud*  
Signature

7-22-2003  
Date

Registration No. 9808

Land Surveyor,  Professional Engineer

County Surveyor,  County Engineer

### OFFICE OF THE COUNTY RECORDER

County of \_\_\_\_\_

I hereby certify that this document was filed in the County Recorder's office at \_\_\_\_\_ M. on the \_\_\_\_\_ day of \_\_\_\_\_ A.D., 20\_\_\_\_

County Recorder \_\_\_\_\_

BY \_\_\_\_\_ Deputy

DOCUMENT NO. \_\_\_\_\_

## STATEMENT OF EVIDENCE

### FROM ISANTI COUNTY

According to Book B of Survey Records, page 139, on file in the office of the Isanti County Recorder, a survey by A.W. Holm, surveyor, involving Section 4, Township 37, Range 24, dated February 4 to 6, 1909, "found witness trees—sandstone for corner".

On November 1, 1989, we excavated and found a 10 inch by 6 inch by 7 inch stone monument 1.0 feet below roadway surface—we took reference ties to the stone monument and lowered stone to allow for a cast iron monument to be set over stone.

On November 5, 1996, we set an Isanti County cast iron monument over the stone and took additional reference ties.