

CERTIFICATE OF LOCATION OF GOVERNMENT CORNER

SOUTHEAST Corner of Section 32, Township 38, Range 24, 4TH P.M.

STATE OF MINNESOTA, County of KANABEC

At the corner location shown on the sketch:
On 04/08/2003 Found a Cast Iron Monument.

Kanabec County U.S. Survey Feet Coordinates
NAD 1983, HARN 1996 Adjustment
Obtained by RTK GPS Observation

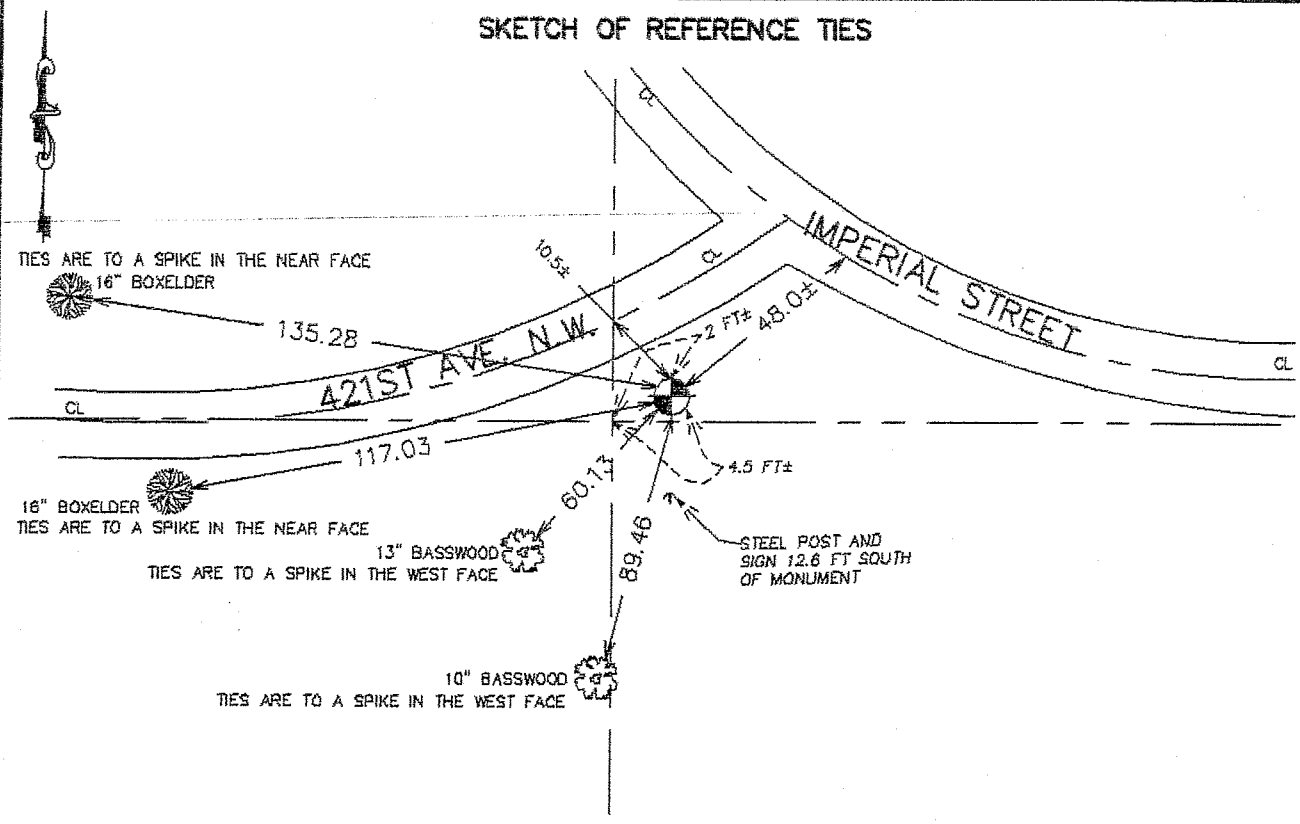
Northing= 100636.087

Easting= 385548.180

Note: NAD 1983, HARN 1996 Adjustment
coordinates are NOT compatible with
NAD 1983 coordinates

Note: 1 Meter=3937/1200 U.S. Survey Feet

SKETCH OF REFERENCE TIES



Statement of evidence relative to this corner location is on back of page.

I hereby certify that this document and the data contained herein was prepared by me or under my direct supervision.

Ernest J. Reed
Signature

7-9-2003
Date

Registration No. 9808

- Land Surveyor, Professional Engineer
 County Surveyor, County Engineer

OFFICE OF THE COUNTY RECORDER

County of _____

I hereby certify that this document was filed in the County Recorder's office at _____ M. on the _____ day of _____ A.D., 20____

County Recorder _____

BY _____ Deputy

DOCUMENT NO. _____

STATEMENT OF EVIDENCE

FROM ISANTI COUNTY

According to Kanabec County corner location certificate No. 175, dated April 29, 1937, by Frank Tunaclyff, "found iron pin in 1932, 1936 set permanent marker rock with "X"."

On November 1, 1989, we found a stone monument with "X" mark on top - down 18 inches in roadway - reference ties were taken and stone was lowered to allow for a cast iron stone to be placed above the stone.

On November 5, 1996, we set an Isanti County cast iron monument over stone monument and took additional reference ties.