

# CERTIFICATE OF LOCATION OF GOVERNMENT CORNER

SOUTHEAST Corner of Section 31, Township 38, Range 24, 4TH P.M.  
 STATE OF MINNESOTA, County of KANABEC

At the corner location shown on the sketch:  
 On 04/08/2003 Found an Isanti County Cast Iron Monument.

Kanabec County U.S. Survey Feet Coordinates  
 NAD 1983, HARN 1996 Adjustment  
 Obtained by RTK GPS Observation

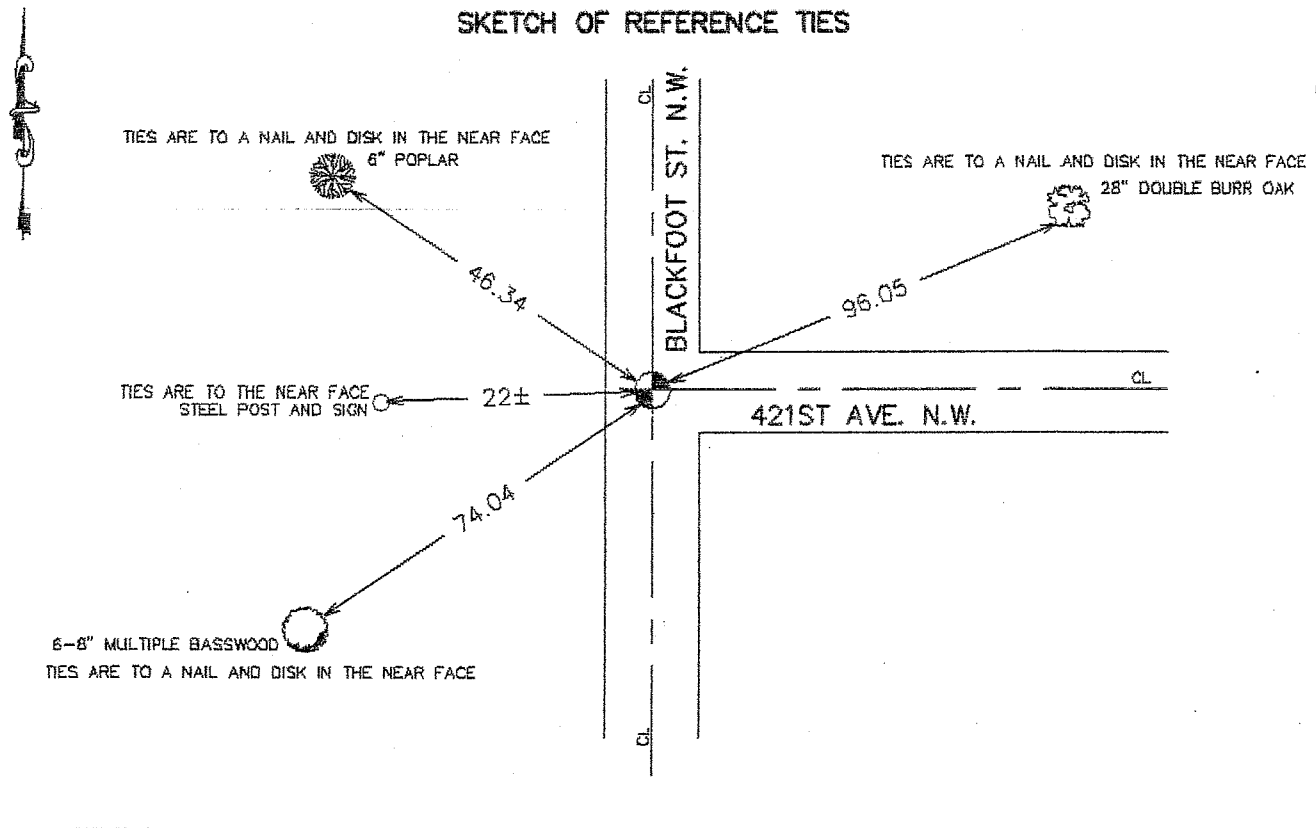
Northing= 100643.780

Easting= 380287.640

Note: NAD 1983, HARN 1996 Adjustment  
 coordinates are NOT compatible with  
 NAD 1983 coordinates

Note: 1 Meter=3937/1200 U.S. Survey Feet

### SKETCH OF REFERENCE TIES



Statement of evidence relative to this corner location is on back of page.

I hereby certify that this document and the data contained herein was prepared by me or under my direct supervision.

Ernest J. Reed  
 Signature

7-11-2003  
 Date

Registration No. 9808

- Land Surveyor,     Professional Engineer  
 County Surveyor,     County Engineer

### OFFICE OF THE COUNTY RECORDER

County of \_\_\_\_\_

I hereby certify that this document was filed in the County Recorder's office at \_\_\_\_\_ M. on the \_\_\_\_\_ day of \_\_\_\_\_ A.D., 20\_\_\_\_

County Recorder \_\_\_\_\_

BY \_\_\_\_\_ Deputy

DOCUMENT NO. \_\_\_\_\_

## STATEMENT OF EVIDENCE

### FRON ISANTI COUNTY

The following is from Kanabec County Certificate of Location of Government Corner No. 780, by M.B. Rude, Kanabec County Surveyor:

John Nelson, the former County Surveyor, used this corner in 1893, Book A of Surveys, page 26, and made two new witness trees. These witness trees are now gone.

On August 15, 1988, we ran a survey around Section 31 to locate existing monuments, lines of occupation are now gone.

This corner falls at the intersection of roads north-south and east.

On August 18, 1988, we made an excavation with the backhoe for this corner. The excavation was 12 feet square, 3 feet deep and centered on the center line of the intersection. No evidence was found in the excavation.

A 1/2" iron pipe was set at the centerline of the intersection after the excavation. This corner has not been verified.

On November 5, 1996, we set an Isanti County cast iron monument at the location of the 1/2" iron pipe mentioned previously and took reference ties.