

CERTIFICATE OF LOCATION OF GOVERNMENT CORNER

South quarter Corner of Section 31, Township 38, Range 24, 4TH P.M.

STATE OF MINNESOTA, County of KANABEC

At the corner location shown on the sketch:

Found a #7 capped rebar

Kanabec County U.S. Survey Feet Coordinates
NAD 1983, HARN 1996 Adjustment
Obtained by RTK GPS Observation

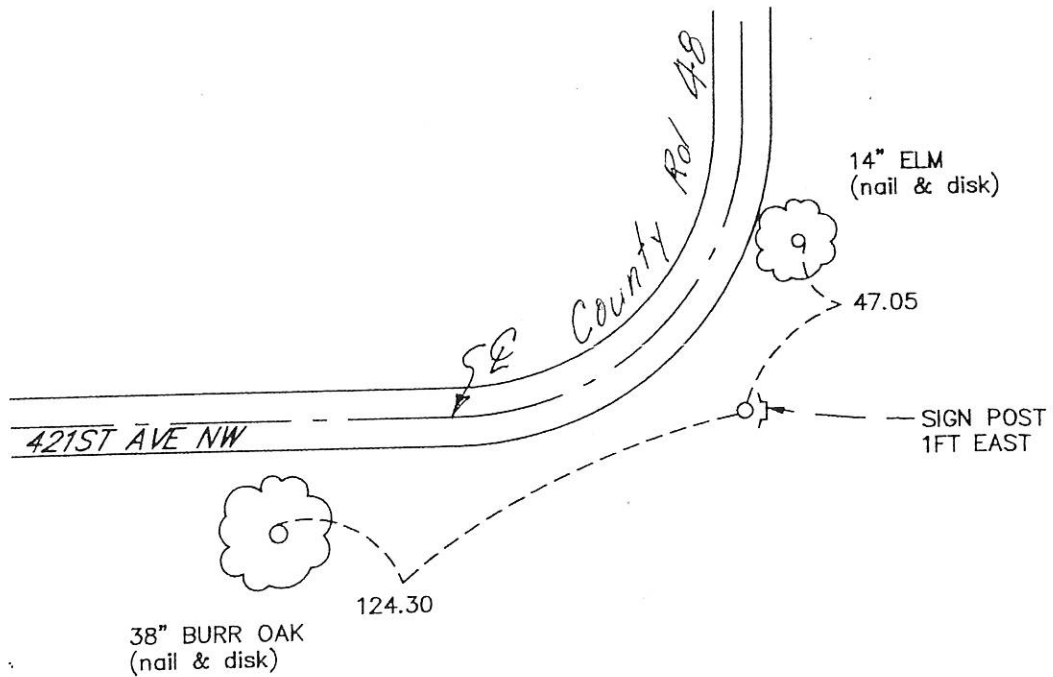
Northing= 100653.44

Easting= 377625.98

Note: NAD 1983, HARN 1996 Adjustment
coordinates are NOT compatible with
NAD 1983 coordinates

Note: 1 Meter=3937/1200 U.S. Survey Feet

SKETCH OF REFERENCE TIES



Statement of evidence relative to this corner location is on back of page.

I hereby certify that this document and the data contained herein was prepared by me or under my direct supervision.

Ernest J. Red
Signature

Feb 5, 2014
Date

Registration No. 9808

- Land Surveyor, Professional Engineer
- County Surveyor, County Engineer

OFFICE OF THE COUNTY RECORDER

County of _____

I hereby certify that this document was filed in the County Recorder's office at _____ M. on the _____ day of _____ A.D., 20____

County Recorder _____

BY _____ Deputy

DOCUMENT NO. _____

All of the original bearing trees are now gone.

In March of 1925, former County Surveyor, George A. Jenks, set a stone with a "+" cut in it at this corner.

In 1943, Harvey Cartwright, a Land Surveyor, found the stone with the "+" cut in it.

On August 15, 1988, M.B. Rude ran a survey around Section 31 to locate existing monuments, lines of occupation and search areas.

This corner falls at the PI of a curve in the road North and West.

On August 18, 1988, M.B. Rude made an excavation with the backhoe. At 6" below the surface he found the stone monument with the "+" cut in the top. He set a 3' by 7/8" capped rebar to replace the stone monument.

In August 2013 E.G. Rud & Sons, inc. surveyed parcels in the Northeast Quarter of Section 31 and found this capped rebar. Kanabec County Coordinates were established on this position.