

# CERTIFICATE OF LOCATION OF GOVERNMENT CORNER

SOUTHWEST Corner of Section 37, Township 38, Range 24, 4TH P.M.  
 STATE OF MINNESOTA, County of KANABEC

At the corner location shown on the sketch:

FOUND THIS MONUMENT  
AND ESTABLISHED G.P.S. COORDINATES ON ITS LOCATION

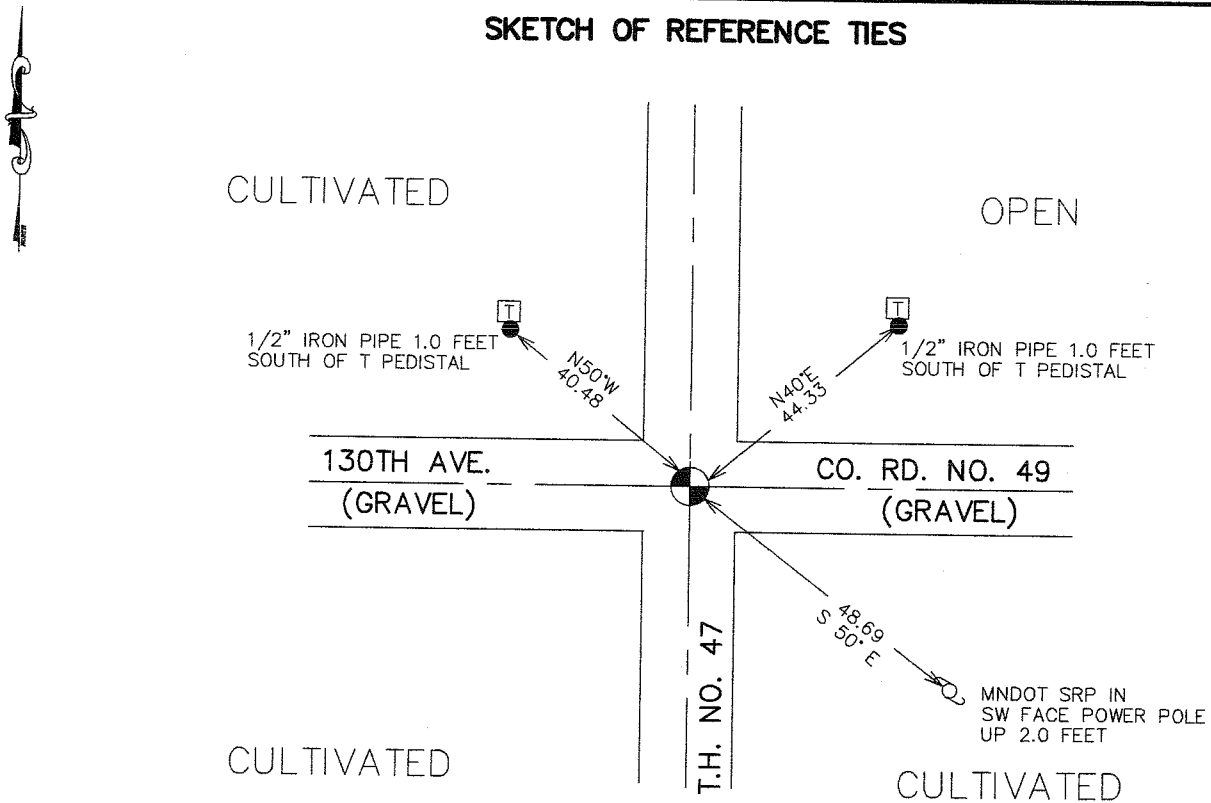
Kanabec County U.S. Survey Feet Coordinates  
NAD 1983, HARN 1996 Adjustment  
Obtained by RTK GPS Observation

Northing= 100652.63  
Easting= 375115.71

Note: NAD 1983, HARN 1996 Adjustment  
coordinates are NOT compatible with  
NAD 1983 coordinates

Note: 1 Meter=3937/1200 U.S. Survey Feet

## SKETCH OF REFERENCE TIES



Statement of evidence relative to this corner location is on back of page.

I hereby certify that this document and the data contained herein was prepared by me or under my direct supervision.

5-02-2007  
 Signature Date

Registration No. Minn No 9808

Land Surveyor,     Professional Engineer  
 County Surveyor,     County Engineer

### OFFICE OF THE COUNTY RECORDER

County of \_\_\_\_\_

I hereby certify that this document was filed in the County Recorder's office at \_\_\_\_\_ M. on the \_\_\_\_\_ day of \_\_\_\_\_ A.D., 20\_\_\_\_

County Recorder \_\_\_\_\_  
BY \_\_\_\_\_ Deputy

DOCUMENT NO. \_\_\_\_\_

## SOUTHWEST CORNER SECTION 37, T38, R24

### STATEMENT OF EVIDENCE

The original public land survey was run in 1849 by Mr. J. Smith, Deputy Surveyor, and a wood post was used to mark the corner. Bearing ties were made to two elms, one sugar maple and a pine tree.

In 1904, John Nelson, Former County Surveyor, made a survey in Section 31, T. 38 N., R.24 W., for John Markquet. In the survey, Mr. Nelson mentions all the Section Corners being in. Mr. Nelson does not say what was found at the corners. Recorded in Surveyor's Record Book 2, Page 33.

In 1988, M.B. Rude, Surveyor, on document index number 18, a Certificate of Location of Government Corner for the Northeast Corner of Section 1, T. 37 N., R 25 W., it is shown that Mr. Rude found a 1 foot cut sandstone. Mr. Rude lowered the stone and placed a 7/8 x 24 inch capped rebar at the same location. New reference ties were taken. Mr. Rude stated the following on the back of the document:

- All of the original bearing trees are now gone.
- In 1893, John Nelson found this corner and took new bearing trees. These trees are now gone.
- In 1901, John Nelson found a stone monument at this corner.
- The Isanti County Records show a stone monument in Book B, page 146 and Book A, page 215.
- On August 15, 1988, I ran a survey around Section 31 to locate existing monuments, lines of occupation and search areas.
- This corner falls at the intersection of roads north-south-east-west.
- On August 18, 1988, we made an excavation with the backhoe. At 3 feet below the surface we found 1' square cut sandstone; the sandstone was 2 feet long. We offset the stone and lowered it and set a 2' by 7/8" capped rebar over the stone.

On February 22, 1999, The Minnesota Department of Transportation recovered the capped rebar and two reference ties as shown on Mr. Rude's document, index number 18.

In February, 2002, The Minnesota Department of Transportation established three additional bearing ties to the capped re-bar, as shown on the front of this Certificate. The Minnesota Department of Transportation accepts this position as the correct location for the corner.

For details and survey analysis, contact the Minnesota Department of Transportation District Surveys Office in Baxter, Minnesota

In April 2003, E.G. Rud and Sons established Kanabec County Coordinates on this location using g.p.s. equipment.