

CERTIFICATE OF LOCATION OF GOVERNMENT CORNER

NW
 _____ Corner of Section 36 , Township 38 , Range 24 , 4TH P.M.

STATE OF MINNESOTA, County of KANABEC

At the corner location shown on the sketch:
 On 06/ /2003 Found a Cast Iron Monument.

Kanabec County U.S. Survey Feet Coordinates
 NAD 1983, HARN 1996 Adjustment
 Obtained by RTK GPS Observation

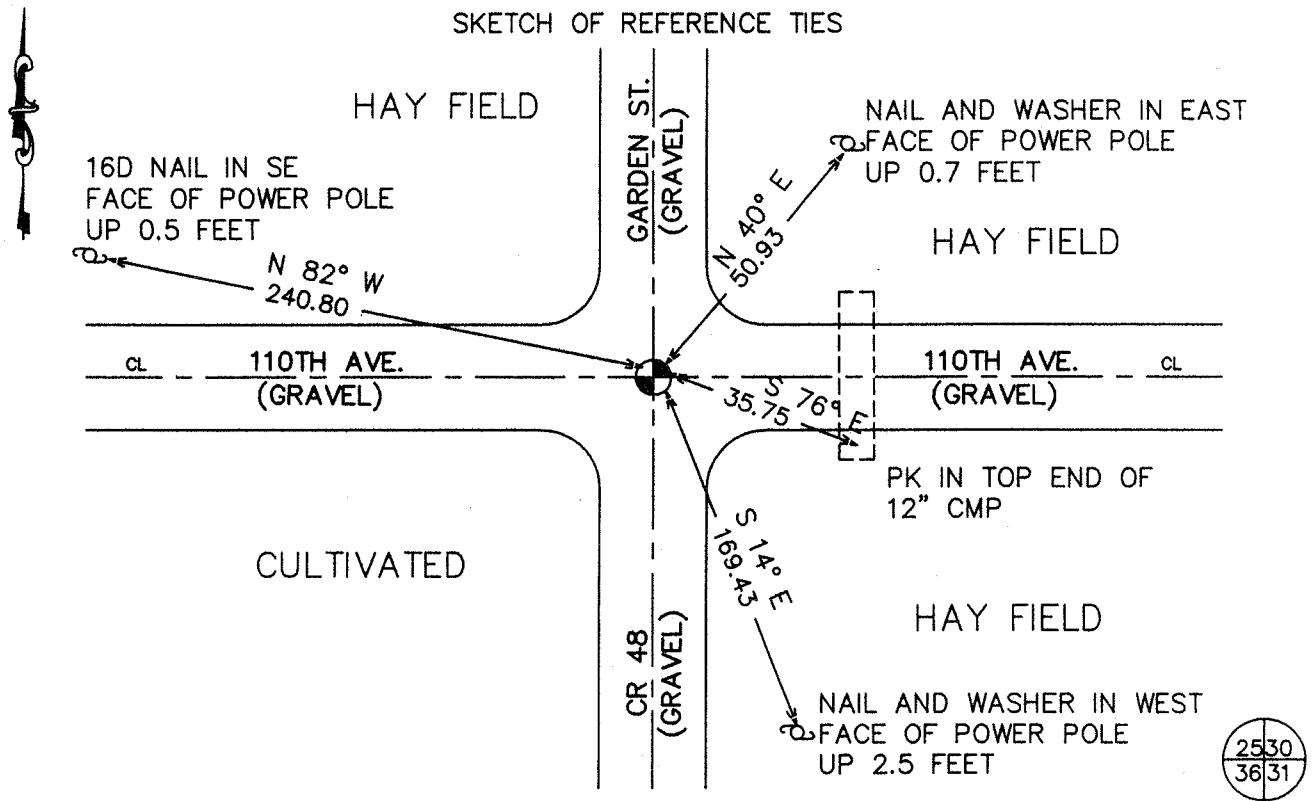
Northing= 105904.43

Easting= 375156.44

Note: NAD 1983, HARN 1996 Adjustment
 coordinates are NOT compatible with
 NAD 1983 coordinates

Note: 1 Meter=3937/1200 U.S. Survey Feet

SKETCH OF REFERENCE TIES



Statement of evidence relative to this corner location is on back of page.

I hereby certify that this document and the data contained herein was prepared by me or under my direct supervision.

Ernest J. Red 2-1-2005
 Signature Date

Registration No. 9808

Land Surveyor, Professional Engineer

County Surveyor, County Engineer

OFFICE OF THE COUNTY RECORDER

County of _____

I hereby certify that this document was filed in the County Recorder's office at _____ M. on the

_____ day of _____ A.D., 20__

County Recorder _____

BY _____ Deputy

DOCUMENT NO. _____

Statement of Evidence: Northeast Corner of Section 36, Township 38 North, Range 25 West, 4th Principal Meridian, Kanabec County, Minnesota.

The original public land survey was run in 1849 by Mr. J. Smith, Deputy Surveyor, and a wood post was used to mark the corner. Bearing ties were made to two ironwoods, one linden and a hickory.

In 1893, John Nelson, former County Surveyor, made a survey in Section 31, T. 38, R.24, for Charles Ostrom and others. In the survey, Mr. Nelson runs to the Northwest Corner of Section 31, and makes new bearings to a red oak, a maple, and a pine. Mr. Nelson does not state what was found for the corner. Recorded in Surveyor's Record Book A, Page 26.

In 1901, John Nelson, Surveyor, made a survey in Section 36 T. 38, R. 25, for Nels Solstrom, recorded in Surveyor's Record Book 2, Page 4. Mr. Nelson noted the survey ran to the Northeast Corner " being a stone " for corner, as placed by former survey.

In 1901, John Nelson, Surveyor, made a survey of a County Road in Section 31, T. 38, R. 24, recorded in Surveyor's Record Book 2, Page 13. Mr. Nelson noted the survey terminated at the Northwest Corner. Mr. Nelson does not state what was found for the corner.

In 1904, John Nelson, former County Surveyor, made a survey in Section 31, T. 38, R.24, for John Markquet. In the survey, Mr. Nelson states " all the section corners being in". Mr. Nelson does not state what was found for the corner. Recorded in Surveyor's Record Book 2, Page 33.

In 1984, M.B. Rude, Kanabec County Surveyor, Recorded Certificate Index No. 690, States:

- All of the original bearing trees are now gone.
- In 1925, George Jenas, a surveyor, set a stone with a "+" at this corner, certificate number 38.
- In 1931, surveyor Charles Handschu, found the stone with a "+" at this corner.
- This corner falls at the intersection of roads.

On July 3, 1984, M.B. Rude made an excavation with a backhoe at this location. At 1.5 feet below the surface, Mr. Rude found the stone with a "+" and set a 4" by 12" cast iron monument on top of the stone to mark the corner.

On April 19, 1999, The Minnesota Department of Transportation recovered a cast iron monument and three reference ties as shown on Mr. Rude's Document Index 690.

In January, 2002, The Minnesota Department of Transportation established new bearing ties to the existing ties and to one new reference tie (a culvert end.) The Minnesota Department of Transportation accepts this position as the correct location for the corner.

For details and survey analysis, contact the Minnesota Department of Transportation District Surveys Office in Baxter, Minnesota.

In June 2003, we ran a survey around Sections 19 and 30, and found this cast iron monument set by M.B. Rude. We established Kanabec County coordinates using GPS equipment.