

# CERTIFICATE OF LOCATION OF GOVERNMENT CORNER

NORTHEAST Corner of Section 25, Township 38, Range 25, 4TH P.M.  
 STATE OF MINNESOTA, County of KANABEC

At the corner location shown on the sketch:  
 On 06/ /2003 Found a Cast Iron Monument.

Kanabec County U.S. Survey Feet Coordinates  
 NAD 1983, HARN 1996 Adjustment  
 Obtained by RTK GPS Observation

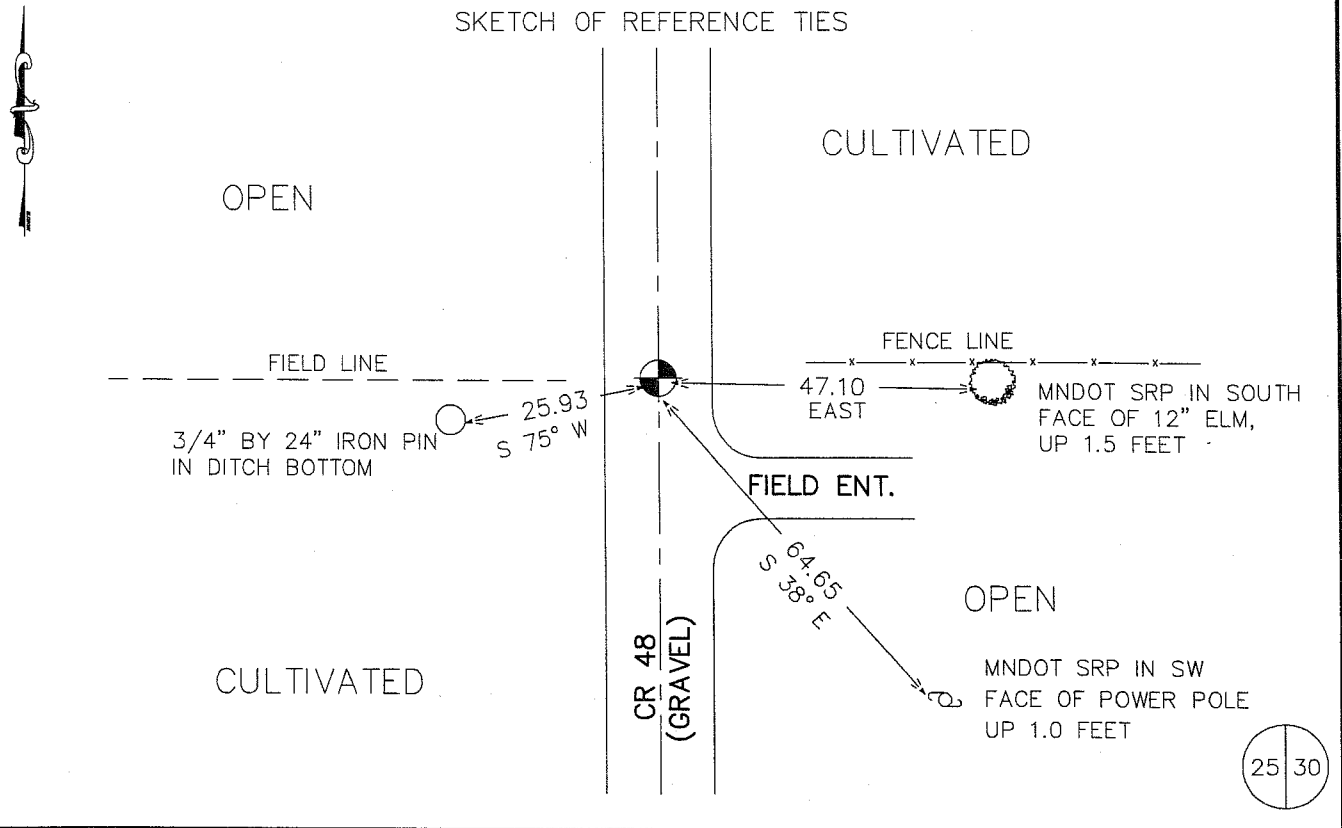
Northing= 108536.54

Easting= 375179.78

Note: NAD 1983, HARN 1996 Adjustment  
 coordinates are NOT compatible with  
 NAD 1983 coordinates

Note: 1 Meter=3937/1200 U.S. Survey Feet

SKETCH OF REFERENCE TIES



Statement of evidence relative to this corner location is on back of page.

I hereby certify that this document and the data contained herein was prepared by me or under my direct supervision.

*Ernest Heel*  
 Signature

1-23-2006  
 Date

Registration No. Minn No 9808

- Land Surveyor,     Professional Engineer  
 County Surveyor,     County Engineer

## OFFICE OF THE COUNTY RECORDER

County of \_\_\_\_\_

I hereby certify that this document was filed in the County Recorder's office at \_\_\_\_\_ M. on the

\_\_\_\_\_ day of \_\_\_\_\_ A.D., 20\_\_

County Recorder \_\_\_\_\_

BY \_\_\_\_\_ Deputy

**DOCUMENT NO.** \_\_\_\_\_

## STATEMENT OF EVIDENCE

East Quarter Corner of Section 25, Township 38 North, Range 25 West, 4th Principal Meridian, Kanabec County, Minnesota.

The original public land survey was run in 1849 by Mr. J. Smith, Deputy Surveyor, and a wood post was used to mark the corner. Bearing ties were made to an ironwood and an elm tree.

On March 18, 1925, George H. Jinks, County Surveyor, placed a stone with a "+" and made new reference ties to a telephone pole and a power pole, recorded on Document Index Number 57.

In 1984, M.B. Rude, Kanabec County Surveyor, Recorded Certificate Index No. 691, States: All of the original bearing trees are now gone. In 1925, George Jenks, set a stone with a "+" at this corner, certificate No. 57.

In 1931, surveyor Charles Handschu, set an iron bolt at this corner.

This corner falls in a north-south road and fence line east.

On July 3, 1984, M.B. Rude, Kanabec County Surveyor, made an excavation with a backhoe, and at 2.5 feet below the surface found the iron bolt set by Handschu in 1931. Mr. Rude set a 4 inch by 17 inch cast iron monument on top of the found bolt to mark this corner.

On April 19, 1999, The Minnesota Department of Transportation recovered a cast iron monument and one reference ties as shown on Mr. Rude's Document Index 691.

On February 19, 2002, The Minnesota Department of Transportation again recovered the cast iron monument and established new bearing ties to the existing tie, an elm tree, and a 3/4 x 24 inch iron pin. The Minnesota Department of Transportation accepts this position as the correct location for the corner.

In June 2003, we ran a survey around Sections 19 and 30, and found this cast iron monument set by M.B. Rude. We established Kanabec County coordinates using GPS equipment.