

# CERTIFICATE OF LOCATION OF GOVERNMENT CORNER

NW  
NORTHEAST Corner of Section 30, Township 38, Range 25, 4TH P.M.

STATE OF MINNESOTA, County of KANABEC

At the corner location shown on the sketch:  
On 06/ /2003 Found a Cast Iron Monument.

Kanabec County U.S. Survey Feet Coordinates  
NAD 1983, HARN 1996 Adjustment  
Obtained by RTK GPS Observation

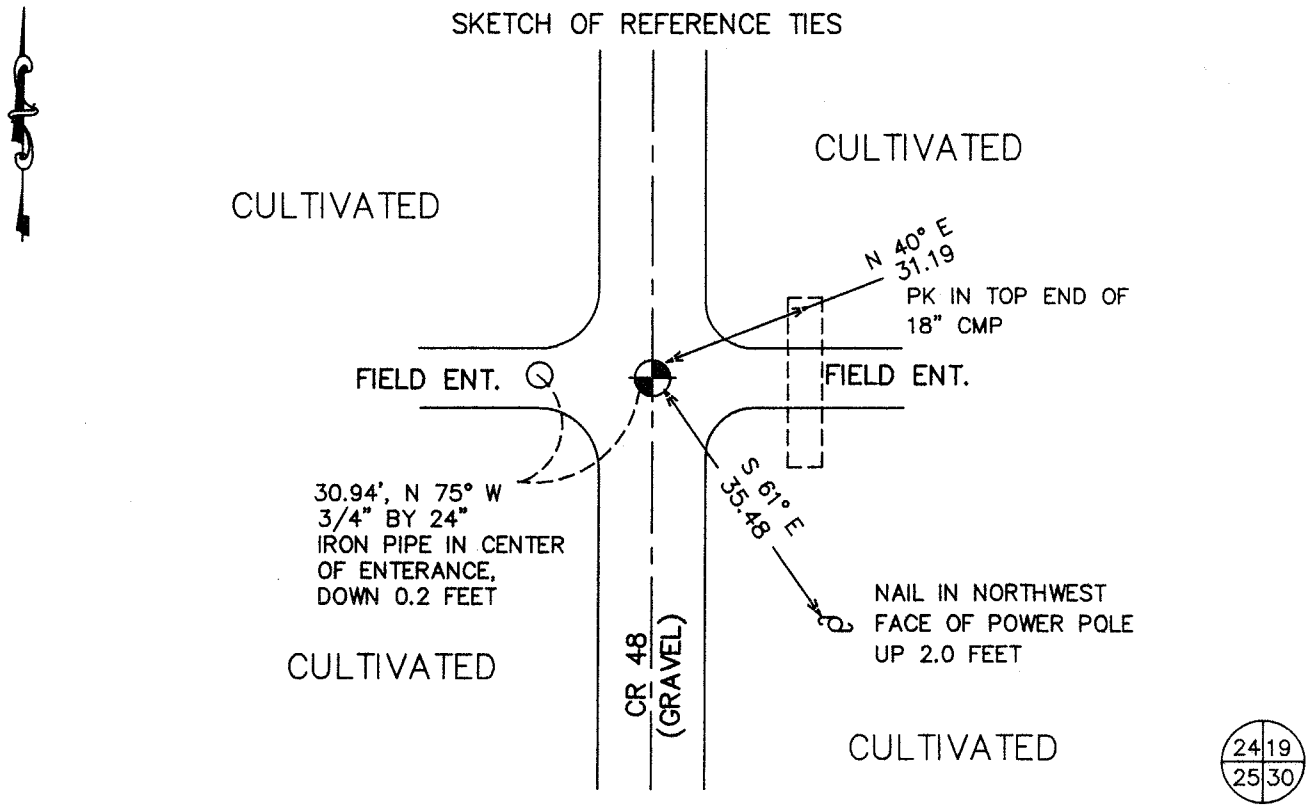
Northing= 111158.40

Easting= 375202.35

Note: NAD 1983, HARN 1996 Adjustment  
coordinates are NOT compatible with  
NAD 1983 coordinates

Note: 1 Meter=3937/1200 U.S. Survey Feet

SKETCH OF REFERENCE TIES



Statement of evidence relative to this corner location is on back of page.

I hereby certify that this document and the data contained herein was prepared by me or under my direct supervision.

Ernest J. Reed 1-31-2005  
Signature Date

Registration No. 9808

Land Surveyor, [ ] Professional Engineer

[ ] County Surveyor, [ ] County Engineer

## OFFICE OF THE COUNTY RECORDER

County of \_\_\_\_\_

I hereby certify that this document was filed in the County Recorder's office at \_\_\_\_\_ M. on the

\_\_\_\_\_ day of \_\_\_\_\_ A.D., 20\_\_

County Recorder \_\_\_\_\_

BY \_\_\_\_\_ Deputy

DOCUMENT NO. \_\_\_\_\_

Statement of Evidence: Northeast Corner of Section 25, Township 38 North, Range 25 West,  
4<sup>th</sup> Principal Meridian, Kanabec County, Minnesota.

The original public land survey was run in 1849 by Mr. J. Smith, Deputy Surveyor, and a wood post was used to mark the corner. Bearing ties were made to a sugar maple, an elm, a black ash, and an ironwood.

In 1893, John Nelson, former County Surveyor, made a survey between Sections 24, T. 38, R. 25, and Section 19, T. 38, R. 24, for the Supervisors of the Township of Brunswick. In the survey, Mr. Nelson found the Southwest Corner of Section 19, T. 38, R. 24, and also decayed old bearing ties. New reference ties were made to two maples and a black ash tree. Mr. Nelson does not state what was found for the corner. Recorded in Surveyor's Record Book A, Page 30.

In 1921, George Jenks, County Surveyor, found an old post and set a stone with a "+", Certificate No. 36.

In 1984, M.B. Rude, Kanabec County Surveyor, recorded Certificate Index No. 689, in which he States: All of the original bearing trees are now gone. In 1921, surveyor, George Jenks, found the original corner post and set a stone with a "+", Certificate No. 36. In 1931, surveyor, Charles Handschu, found the broken sandstone and replaced it with an iron monument. This corner falls in a North-South road.

On July 3, 1984, M.B. Rude, Kanebec County Surveyor, made an excavation with a backhoe, and at 1 foot below the surface found a 1 inch iron pin, per Handschu's records. He lowered the pin and set a 4 inch by 17 inch cast iron monument on top of the iron pin to mark this corner.

On April 19, 1999, The Minnesota Department of Transportation recovered a cast iron monument and one reference tie as shown on Mr. Rude's Document Index 689.

In January, 2002, The Minnesota Department of Transportation accepted the found cast iron monument as the location of the corner. New bearing ties were made to the existing tie and to two new reference ties, as shown on the front of this sheet. The Minnesota Department of Transportation accepts this position as the correct location for the corner.

For details and survey analysis, contact the Minnesota Department of Transportation District Surveys Office in Baxter, Minnesota.

In June 2003, we ran a survey around Sections 19 and 30, and found this cast iron monument set by M.B. Rude. We established Kanabec County coordinates using GPS equipment.