

CERTIFICATE OF LOCATION OF GOVERNMENT CORNER

West quarter 19 24
East quarter Corner of Section 24, Township 38, Range 25, 4th P.M.
STATE OF MINNESOTA, County of KANABEC

At the corner location shown on the sketch:

Reset a 1/2" x 5" iron pipe with cap # 9808

Kanabec County U.S. Survey Feet Coordinates
NAD 1983, HARN 1996 Adjustment
Obtained by RTK GPS Observation

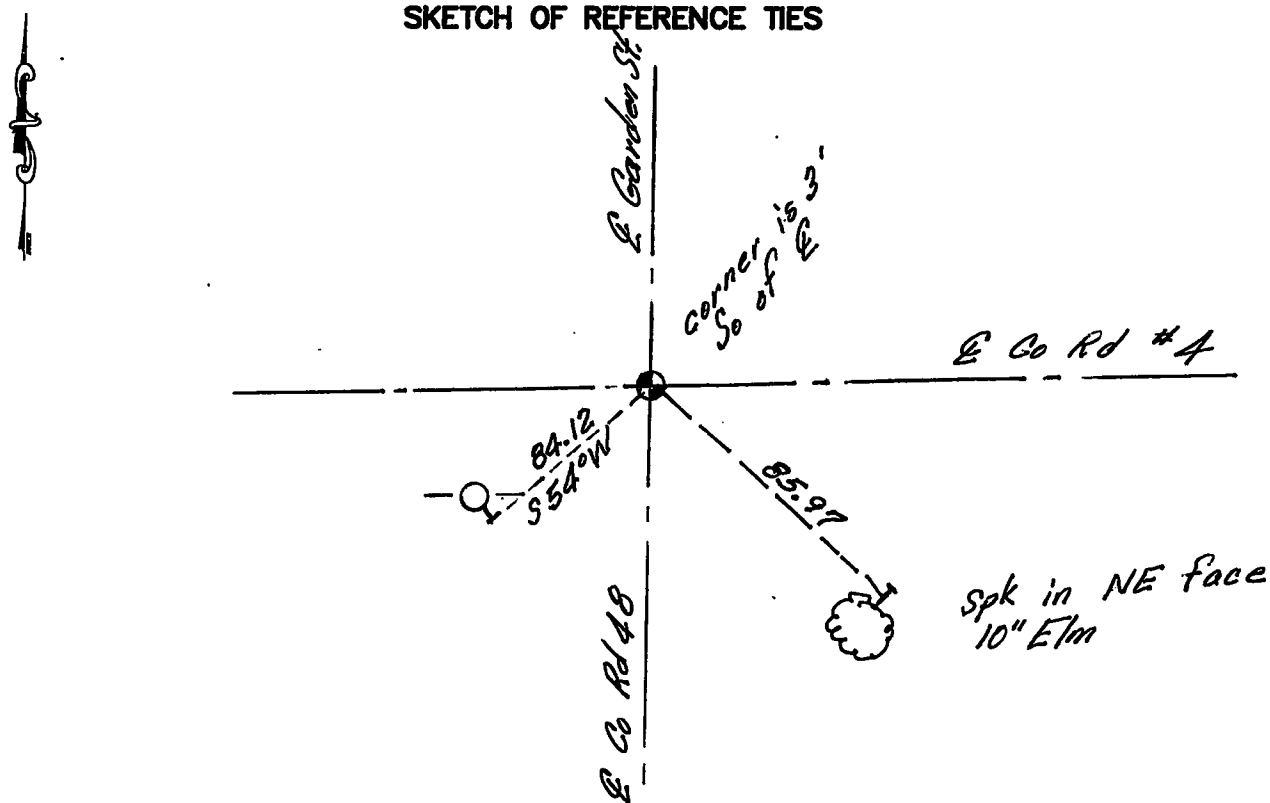
Northing= 113793.02

Easting= 375218.97

Note: NAD 1983, HARN 1996 Adjustment
coordinates are NOT compatible with
NAD 1983 coordinates

Note: 1 Meter=3937/1200 U.S. Survey Feet

SKETCH OF REFERENCE TIES



Statement of evidence relative to this corner location is on back of page.

I hereby certify that this document and the data contained herein was prepared by me or under my direct supervision.

Ernest L. Bud
Signature

10-6-2014
Date

Registration No. 9808

Land Surveyor, Professional Engineer

County Surveyor, County Engineer

OFFICE OF THE COUNTY RECORDER

County of Kanabec

I hereby certify that this document was filed in the County Recorder's office at 8:00 A.M. on the

17 day of Dec A.D., 2014

County Recorder Rhonda Olson

BY _____ Deputy

DOCUMENT NO. _____

STATEMENT OF EVIDENCE

West Quarter Corner Section 19, Township 38, Range 24

3824032 & 3825006

All of the original bearing trees are now gone.

John Nelson, the County Surveyor set a big sandstone to mark this corner in 1911.

On July 3, 1980 M.B. Rude found a spike on the surface at the intersection of roads north-south and east-west. He offset the spike and made an excavation with the back hoe 15 feet by 15 feet by 5 feet deep at this intersection. No evidence was found in the excavation.

The sandstone set in 1911 by John Nelson was apparently removed in the road construction.

He measured the west line of Section 19, and the spike found fits the lines of occupation and the government distances and was accepted as the best available evidence of the original corner location.

In May 2003 E.G. Rud & Sons found this cast iron monument set by M.B. Rude and Established Kanabec County Coordinates on this location.

On July 7, 2014 E.G. Rud & Sons reset a ½" by 5" iron pipe to replace the cast iron monument that had been removed for road construction. New ties were taken.