

CERTIFICATE OF LOCATION OF GOVERNMENT CORNER

WEST QUARTER Corner of Section 18, Township 38, Range 24, 4TH P.M.

STATE OF MINNESOTA, County of KANABEC

At the corner location shown on the sketch:

FOUND THIS MONUMENT
AND ESTABLISHED G.P.S. COORDINATES ON ITS LOCATION

Kanabec County U.S. Survey Feet Coordinates
NAD 1983, HARN 1996 Adjustment
Obtained by RTK GPS Observation

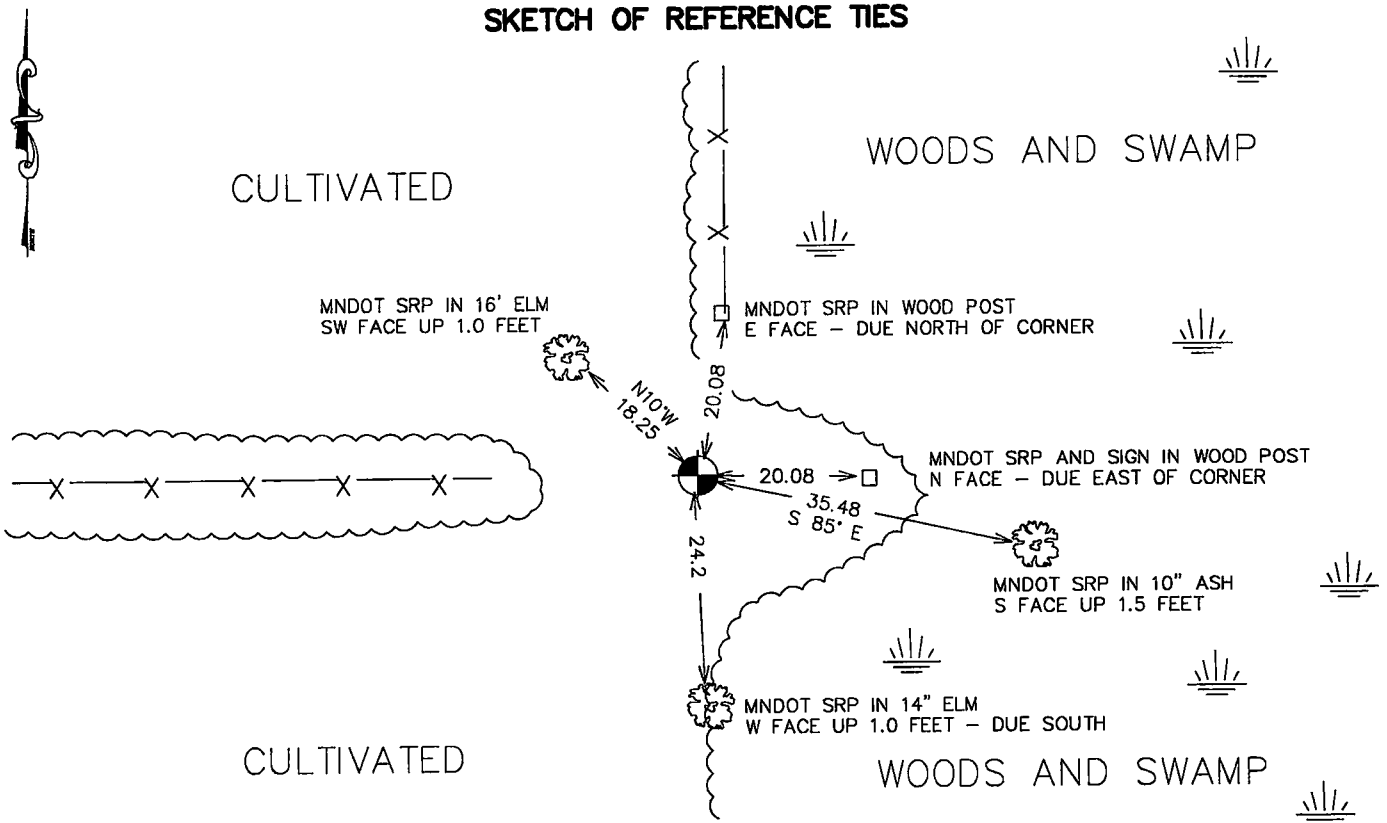
Northing= 119066.56

Easting= 375259.85

Note: NAD 1983, HARN 1996 Adjustment
coordinates are NOT compatible with
NAD 1983 coordinates

Note: 1 Meter=3937/1200 U.S. Survey Feet

SKETCH OF REFERENCE TIES



Statement of evidence relative to this corner location is on back of page.

I hereby certify that this document and the data contained herein was prepared by me or under my direct supervision.

Ernst Rud
Signature

2-2-2010
Date

Registration No. 9808

Land Surveyor, Professional Engineer

County Surveyor, County Engineer

OFFICE OF THE COUNTY RECORDER

County of Kanabec

I hereby certify that this document was filed in the County Recorder's office at 11:30AM on the

3rd day of February A.D., 2010

County Recorder Rhonda Olson

BY L. Holcomb Deputy

DOCUMENT NO. _____

WEST QUARTER CORNER SECTION 18, T38, R24

STATEMENT OF EVIDENCE

The original public land survey was run in 1849 by Mr. J. Smith, Deputy Surveyor, and a wood post was used to mark the corner. Bearing ties were made to three sugar maples and a linden.

In 1911, former County Surveyor, John Nelson, made a survey of a road between Brunswick and South Fork Townships. Mr. Nelson establishes the corner by placing a stake in a swamp for the Quarter Corner, recorded in Surveyor's Record Book A, Page 109.

In 1999–2002, The Minnesota Department of Transportation made a survey around Section 13, T.38, R.25, to locate the existing monuments, lines of occupation, and search areas. This corner falls near the intersection of fence line West and a fence line North.

On November 12, 1999, The Minnesota Department of Transportation recovered a 6–inch by 3–inch by 24 inch stone, standing upright, at the fence line intersection. The stone was removed and excavated below it. A burnt wood post was recovered below the stone. The wood post was removed and the found stone was put back in its original location. New bearing ties were made to two elms, two wood fence posts, and an ash tree. The Minnesota Department of Transportation accepts this position as the correct location for the corner.

For details and survey analysis, contact the Minnesota Department of Transportation District Surveys Office in Baxter, Minnesota.

In April 2003, E.G. Rud and Sons established Kanabec County Coordinates on this location using G.P.S. equipment.