

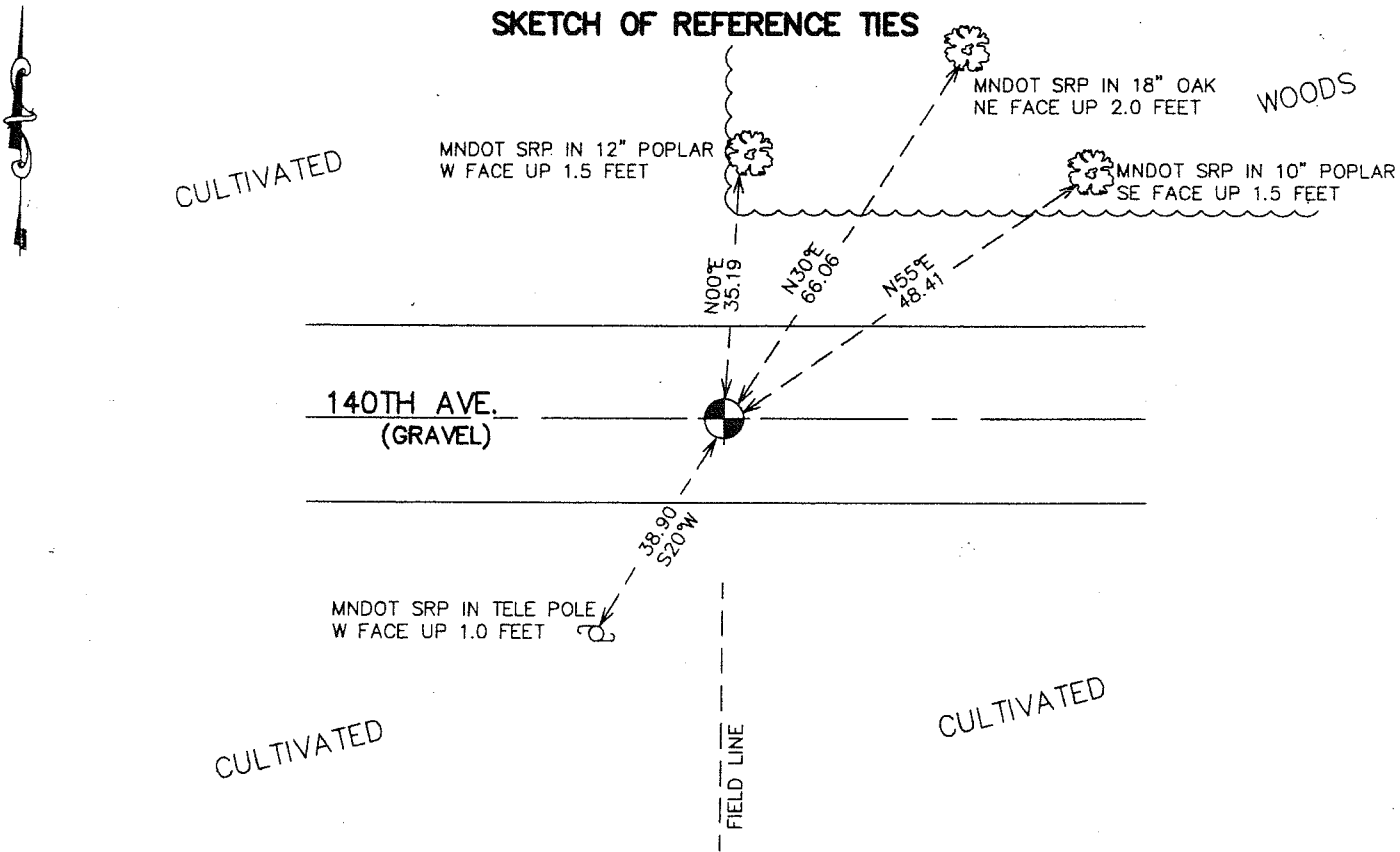
CERTIFICATE OF LOCATION OF GOVERNMENT CORNER

NORTHWEST Corner of Section 18, Township 38, Range 24, 4TH P.M.
 STATE OF MINNESOTA, County of KANABEC

At the corner location shown on the sketch:
**FOUND THIS CORNER
 AND ESTABLISHED G.P.S. COORDINATES ON ITS LOCATION.**

Kanabec County U.S. Survey Feet Coordinates
 NAD 1983, HARN 1996 Adjustment
 Obtained by RTK GPS Observation
 Northing= 121716.63
 Easting= 375291.14
 Note: NAD 1983, HARN 1996 Adjustment
 coordinates are NOT compatible with
 NAD 1983 coordinates
 Note: 1 Meter=3937/1200 U.S. Survey Feet

SKETCH OF REFERENCE TIES



Statement of evidence relative to this corner location is on back of page.

I hereby certify that this document and the data contained herein was prepared by me or under my direct supervision.

Ernest Rud 2-13-2007
 Signature Date

Registration No. Minn No 9808

Land Surveyor, Professional Engineer
 County Surveyor, County Engineer

OFFICE OF THE COUNTY RECORDER

County of _____

I hereby certify that this document was filed in the County Recorder's office at _____ M. on the _____ day of _____ A.D., 20____

County Recorder _____

BY _____ Deputy

DOCUMENT NO. _____

NORTHWEST CORNER SECTION 18, T38, R24

STATEMENT OF EVIDENCE

The original public land survey was run in 1849 by Mr. J. Smith, Deputy Surveyor, and a wood post was used to mark the corner. Bearing ties were made to a linden, a black ash, a maple, and an elm.

In an undated survey, for the County Board, in Surveyor's Record Book A, Page 262, by I.B. Vickery, Surveyor, the West lines of Section 31, T. 39, R. 24, and Sections 6 and 7, T. 38, R. 24 were established. He does not say what was found or set for the corners.

In 1909, former County Surveyor, John Nelson, made a survey of a road on the North line of Section 13, T. 38, R. 25. The survey reestablished the Northwest and North Quarter Corners of Section 13, T. 38, R. 25. Mr. Nelson recovered a stake for the corner.

A sandstone with an "X" was then placed to mark the corner, recorded in Surveyor's Record Book A.

In 1911, former County Surveyor, John Nelson, made a survey of a road between Brunswick and Southfork Townships. Mr. Nelson runs through the corner, and notes a sandstone. Recorded in Surveyor's Record Book A, Page 109.

In 1912, former County Surveyor, John Nelson, made a survey of a road on the South line of Section 1, T. 38, R. 25. The survey commenced at a Government Corner at the Northeast Corner of Section 1, T. 38, R. 25, and runs to the Northeast Corner of Section 13, T. 38, R. 25. He does not say what was found for the corner. Recorded in Surveyor's Record Book A, Page 117.

In 1999–2002, The Minnesota Department of Transportation made a survey around Sections 12 and 13, T. 38, R. 25, to locate the existing monuments, lines of occupation, and search areas. This corner falls near the intersection of a Township Road (140th Ave.) and a tree line North and a field division line South.

On May 3, 1999, The Minnesota Department of Transportation recovered a 20d. nail, down 0.5 feet, at the intersection of the Township Road and occupations North and South. The nail was removed, and a 1.5 x 2.0 x 2 foot deep hole was dug at the location of the nail. No other evidence of the corner was found. The Minnesota Department of Transportation accepted the nail as a perpetuation of the original location of the Corner.

A cast iron cap, with a brass center, on a 30-inch long telespar tube, was set to mark the corner. New bearing ties were made as shown on the front of this Certificate. The Minnesota Department of Transportation accepts this position as the correct location for the corner.

For details and survey analysis, contact the Minnesota Department of Transportation District Surveys Office in Baxter Minnesota.

In April 2006 E.G. Rud and Sons found this corner and established Kanabec County coordinates on this position.