

CERTIFICATE OF LOCATION OF GOVERNMENT CORNER

WEST QUARTER Corner of Section 7, Township 38, Range 24, 4TH P.M.

STATE OF MINNESOTA, County of KANABEC

At the corner location shown on the sketch:

FOUND THIS CORNER
AND ESTABLISHED G.P.S. COORDINATES ON ITS LOCATION.

Kanabec County U.S. Survey Feet Coordinates
NAD 1983, HARN 1996 Adjustment
Obtained by RTK GPS Observation

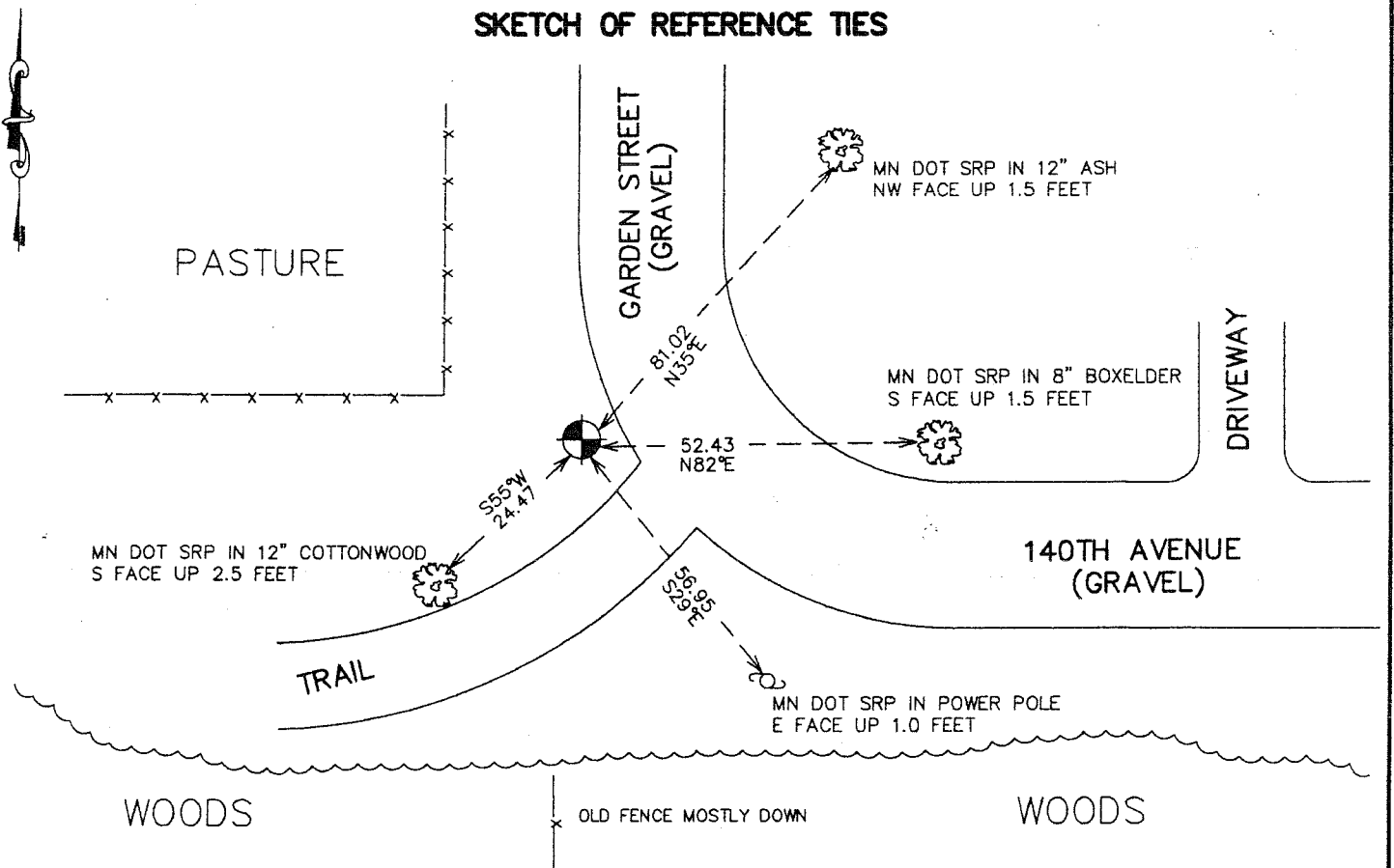
Northing= 124334.88

Easting= 375302.38

Note: NAD 1983, HARN 1996 Adjustment
coordinates are NOT compatible with
NAD 1983 coordinates

Note: 1 Meter=3937/1200 U.S. Survey Feet

SKETCH OF REFERENCE TIES



Statement of evidence relative to this corner location is on back of page.

I hereby certify that this document and the data contained herein was prepared by me or under my direct supervision.

Ernest Alud 2-13-2007
Signature Date

Registration No. Minn No 9808

Land Surveyor, Professional Engineer
 County Surveyor, County Engineer

OFFICE OF THE COUNTY RECORDER

County of _____

I hereby certify that this document was filed in the County Recorder's office at _____ M. on the

_____ day of _____ A.D., 20____

County Recorder _____

BY _____ Deputy

DOCUMENT NO. _____

WEST QUARTER CORNER SECTION 7, T38, R24

STATEMENT OF EVIDENCE

The original public land survey was run in 1849 by Mr. J. Smith, Deputy Surveyor, and a wood post was used to mark the corner. Bearing ties were made to a black ash and an elm.

In an undated survey for the County Board, in Surveyor's Record Book A, Page 262, T.B. Vickery surveyed the West lines of Section 31, T. 39, R. 24, and Sections 6 and 7, T. 38, R. 24. He does not say what was found or set for the corners.

In 1912, former County Surveyor, John Nelson, made a survey of a road on the South line of Section 1, T. 38, R. 25. The survey commenced at a Government Corner at the Northeast Corner of Section 1, T. 38, R. 25, and runs to the Northeast Corner of Section 13, T. 38, R. 25. Mr. Nelson reestablishes the North Quarter and the Northeast Corner of Section 12, T. 38, R. 25. The East Quarter was not mentioned at the time of the survey. Recorded in surveyor's Record Book A, Page 117.

In 1999–2002, The Minnesota Department of Transportation made a survey around Section 12, T. 38, R. 25, to locate the existing monuments, lines of occupation, and search areas.

On July 5, 2001, The Minnesota Department of Transportation excavated a 3.5 x 6.5 x 2.5 foot hole at a location midway and on line between Section Corners. No remaining evidence of the corner was found.

In January, 2002, The Minnesota Department of Transportation established the East Quarter Corner of Section 12, T. 38, R. 25, by computing the position midway and on line between Section Corners. The Minnesota Department of Transportation set a cast iron cap, with a brass center, on a 30-inch long telespar tube, to mark the corner. New bearing ties were made, as shown on the front of this sheet. The Minnesota Department of Transportation accepts this position as the correct location for the corner.

For details and survey analysis, contact the Minnesota Department of Transportation District Surveys Office in Baxter, Minnesota.

In April, 2006 E.G Rud and Sons found this corner and established Kanabec County Coordinates on this location.