

# CERTIFICATE OF LOCATION OF GOVERNMENT CORNER

NORTHWEST Corner of Section 6, Township 38, Range 24, 4TH P.M.

STATE OF MINNESOTA, County of KANABEC

At the corner location shown on the sketch:

FOUND THIS MONUMENT AND ESTABLISHED KANABEC COUNTY COORDINATES ON ITS LOCATION.

Kanabec County U.S. Survey Feet Coordinates  
NAD 1983, HARN 1996 Adjustment  
Obtained by RTK GPS Observation

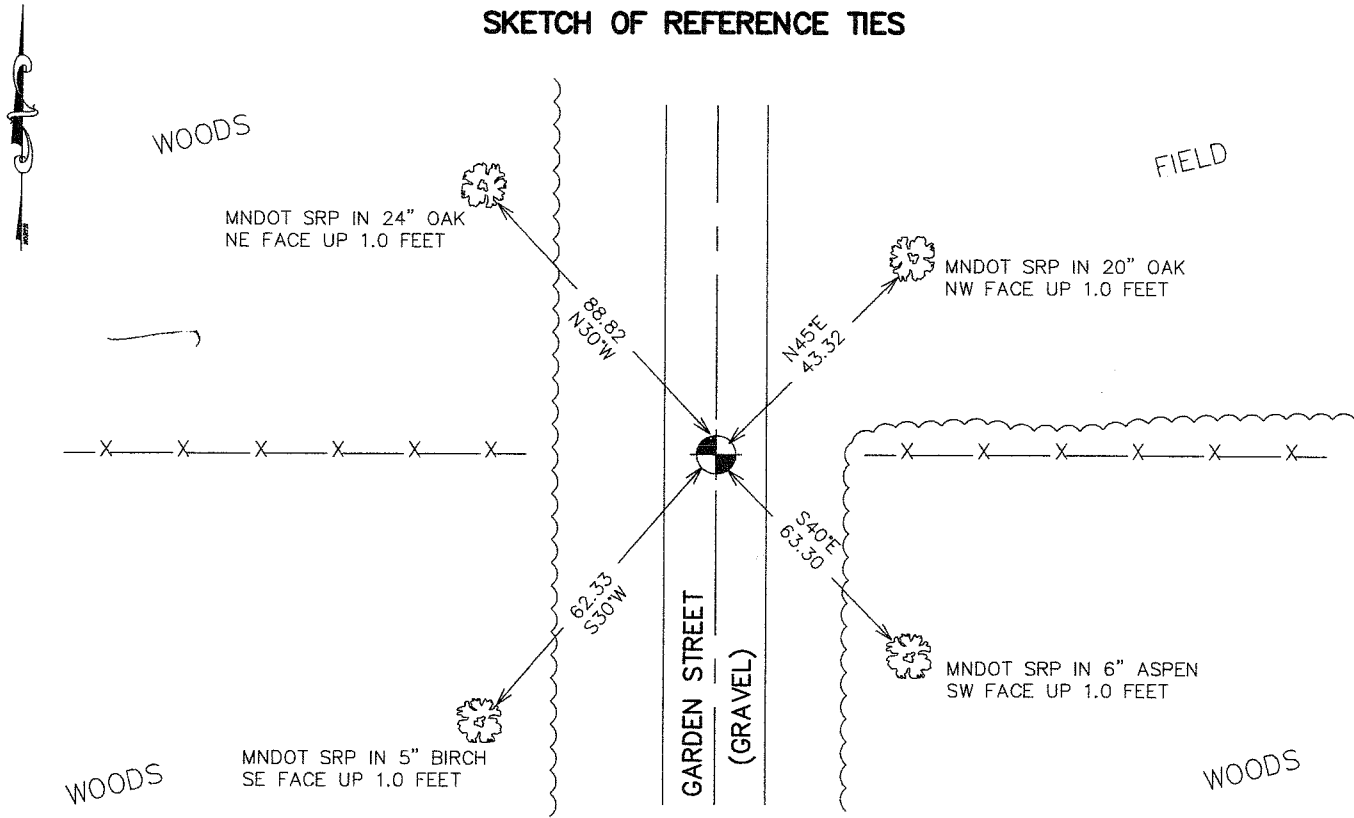
Northing= 132091.570

Easting= 375333.680

Note: NAD 1983, HARN 1996 Adjustment coordinates are NOT compatible with NAD 1983 coordinates

Note: 1 Meter=3937/1200 U.S. Survey Feet

### SKETCH OF REFERENCE TIES



Statement of evidence relative to this corner location is on back of page.

I hereby certify that this document and the data contained herein was prepared by me or under my direct supervision.

*[Signature]* 5-02-2007  
Signature Date

Registration No. Minn No 9808

- Land Surveyor,  Professional Engineer
- County Surveyor,  County Engineer

### OFFICE OF THE COUNTY RECORDER

County of \_\_\_\_\_

I hereby certify that this document was filed in the County Recorder's office at \_\_\_\_\_ M. on the \_\_\_\_\_ day of \_\_\_\_\_ A.D., 20\_\_\_\_

County Recorder \_\_\_\_\_

BY \_\_\_\_\_ Deputy

DOCUMENT NO. \_\_\_\_\_

## NORTHWEST CORNER SECTION 6, T38, R24

### **STATEMENT OF EVIDENCE**

The original public land survey was run in 1849 by Mr. J. Smith, Deputy Surveyor, and a wood post was set to mark the corner. Bearing ties were made to one aspen, one white oak, and two birch trees.

In an undated survey for the County Board, in Surveyor's Record Book A, Page 262, by T.B. Vickery, Surveyor, the West lines of Section 31, T. 39, R. 24, and Sections 6 and 7, T. 38, R. 24 were run in. He does not say what was found or set for the corners.

In 1901, former County Surveyor, John Nelson, made a Township Road Order survey along the North line of Section 6, T. 38, R. 24, recorded in Road Record No 2, Page 309. He does not say what was found or set for the corners.

In 1912, former County Surveyor, John Nelson, made a Township Road Order survey along the South line of Section 1, T. 38, R. 25, recorded in Surveyor's Record Book A, Page 117. The survey started at a good "Government Corner, being the Township Corner."

On November 16, 1999, The Minnesota Department of Transportation excavated a six foot x 10 foot x 4 foot deep area on the centerline of Garden Street, and recovered a 1 foot x 1 foot x 2 foot square sandstone at the intersection of the centerline of North and South Garden Street, and fence lines East and West. The Minnesota Department of Transportation then set a Cast Iron Monument on top of the sandstone, 0.40 feet below the surface. New bearing ties were made to an aspen, a birch, and two oak trees. The Minnesota Department of Transportation accepts this position as the correct location for the corner.

For details and survey analysis, contact the Minnesota Department of Transportation District Surveys Office in Baxter, Minnesota.

In 2005 E.G. Rud and Sons found this corner and established Kanabec County Coordinates on this position using G.P.S. equipment.