

CERTIFICATE OF LOCATION OF GOVERNMENT CORNER

Northeast Corner of Section 6, Township 38 North, Range 24 West,
4th Principal Meridian, Kanabec County, State of Minnesota

At the corner location shown on the sketch:
On 10/15/2020 set a large Mag Spike monument in the blacktop surface.

Kanabec County U.S. Survey Feet Coordinates
NAD 1983, HARN 1996 Adjustment
Obtained by RTK GPS observation
Northing: 132096.0444
Easting: 380477.8518

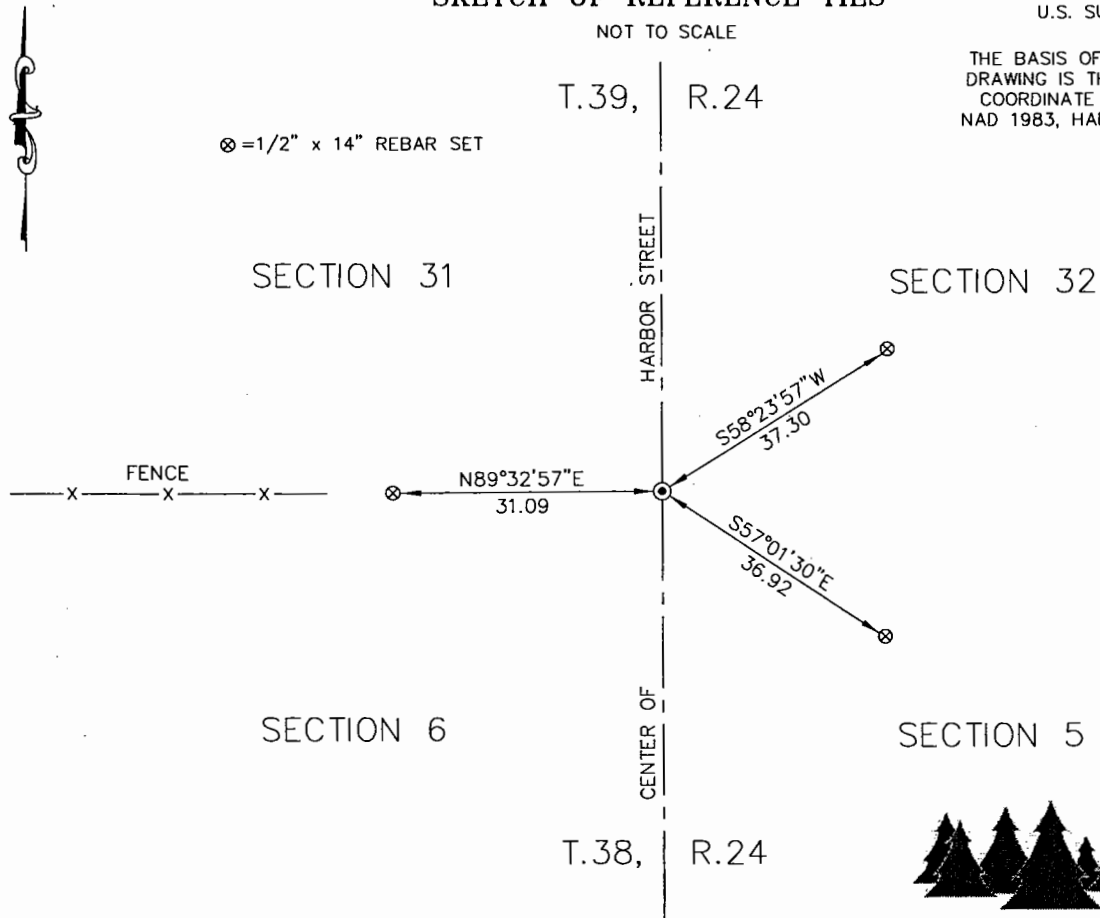
Note: NAD 1983, HARN 1996 Adjustment coordinates are NOT compatible with NAD 1983 coordinates
Note: 1 Meter = 3937/1200 U.S. Survey Feet

SKETCH OF REFERENCE TIES

NOT TO SCALE

DISTANCE UNITS FOR THIS DRAWING IS
U.S. SURVEY FEET


THE BASIS OF BEARINGS FOR THIS
DRAWING IS THE KANABEC COUNTY
COORDINATE SYSTEM BY MNDOT,
NAD 1983, HARN 1996 ADJUSTMENT



Kroschel Land Surveyors, Inc.
1639 Main Street North, Suite 6, Pine City, MN 55063
Phone: 320-629-3267 Fax: 320-629-0176

Statement of evidence relative to this corner location is on back of page.

I hereby certify that this report was prepared by me or under my direct supervision, that the United States public land survey monument record is correct and complete to the best of my knowledge and belief, and that I am a duly Licensed Land Surveyor under the laws of the State of Minnesota.


Tyler J. Kroschel, County Surveyor
License No. 44490
3-9-2022
Date

OFFICE OF THE COUNTY RECORDER
County of Kanabec

I hereby certify that this document was filed in the County Recorder's office at _____ .M. on the _____ day of _____ A.D., 20____
County Recorder _____
_____, Deputy
DOCUMENT NO. _____

Statement of Evidence:

In September of 1849, Deputy Surveyor John M. Smith set a post to mark the Northeast Corner of Section 6, Township 38 North, Range 24 West, 4th Principal Meridian.

Reference ties were taken to:

15 inch W Oak at North 35 degrees West a distance of 20 links

11 inch Sugar at North 67 degrees East a distance of 32 links

12 inch Lind at South 40 degrees West a distance of 16 links

20 inch Pine at South 45 degrees East a distance of 31 links

All of the original Government corner evidence was searched for. None was found.

1899—Township Supervisors Road Order was filed in the office of the County Auditor opening a Township road along the east line of Section 31, T.39, R.24. There is a survey of the road by Thomas Vickery. Vickery measured a distance of 80 chains along the east line of said Section 31.

1904—Surveyor John Nelson made a survey of Section 31, T.39, R.24 filed in Book 2 of 2 of Surveys, Page 33, located at the County Highway Department. Nelson measured a distance of 40.18 chains along the south line of the Southeast Quarter of Section 31. He did not state what type of monument was found at the Southeast corner of Section 6, only that all Section corners being in place.

1910—Surveyor John Nelson made a survey of Section 5, T.38, R.24 filed in Book A1 of Surveys, Page 47, located at the County Highway Department. Nelson measured a distance of 37.10 chains along the west line of the Northwest Quarter of Section 5. He measured 39.94 chains along the north line of the Northwest Quarter of Section 5. He set a stone monument at the Northwest corner of Section 5, using a found GLO witness.

1968—County Highway plans for CSAH No. 12 show a distance of 5125.8 feet along the east line of Section 6, T.38, R.24 and a distance of 5201.5 feet along the east line of Section 31, T.39, R.24. The plan shows the corner being on a fence line west and slightly north of a fence line east. The plan shows this area having a subcut of 1.5 feet below existing grade. The Highway Department Transit notes show they searched for Nelson's stone, but did not find it. I measure 5131.12 feet along the east line of Section 6 and 5292.34 feet along the east line of Section 31.

2008—DNR Surveyor John Walker, LS 16098 made a survey of the Tosher Creek Wildlife Management Area in Sections 32 and 33, T.39, R.24. Walker shows a computed position for the Southwest corner of Section 32 and a dimension of 2637.66 feet to the West Quarter corner of Section 32, and a distance of 2637.96 feet to the South Quarter corner of Section 32.

In October of 2020, I made a survey around Section 6, Township 38 North, Range 24 West, 4th Principal Meridian for Larry Voss to locate existing monuments and establish search areas.

On 10/15/2020 I made a search with a magnetic locator at the centerline of County Highway 12 and a fence line west. No evidence of the corner was found. I also searched with a magnetic locator approximately 30 to 50 feet south of the fence. No evidence of the corner was found. The distance given by Nelson would be approximately 45 feet south of the fence line west. I decided to use the DNR's computed position, as this fit the lines of occupation along the north line of Section 6. This also fits the Highway Plan dimension within reason. I set a large Mag Spike at the DNR's computed position, established reference ties, and assigned Kanabec County Coordinates.

This location was determined to be the best available evidence of the original corner monument. No excavation was made at this location, as the corner falls in a paved highway, and any remaining evidence of the corner would likely have been destroyed by construction of the highway.



Kroschel Land Surveyors, Inc.

1639 Main Street North, Suite 6, Pine City, MN 55063
Phone: 320-629-3267 Fax: 320-629-0176