

CERTIFICATE OF LOCATION OF GOVERNMENT CORNER

~~SOUTH QUARTER~~ Corner of Section 32, Township 79, Range 24, 4TH P.M.
NORTH QUARTER Corner of Section 05, Township 38, Range 24, 4TH P.M.

STATE OF MINNESOTA, County of KANABEC

At the corner location shown on the sketch:
 FOUND REBAR WITH ALUMINUM CAP.

Kanabec County U.S. Survey Feet Coordinates
 NAD 1983, HARN 1996 Adjustment
 Obtained by RTK GPS Observation

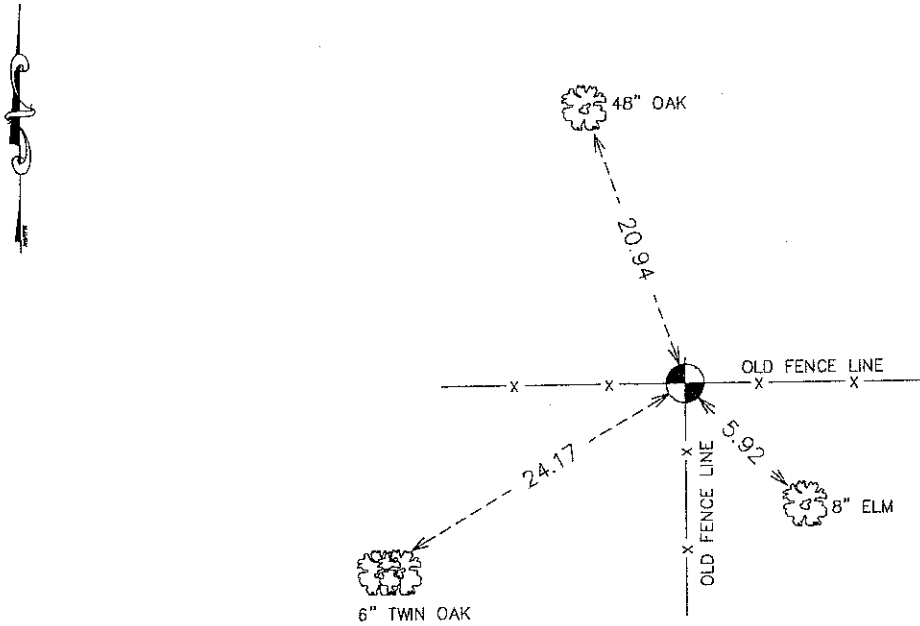
Northing= 132068.16

Easting= 383115.67

Note: NAD 1983, HARN 1996 Adjustment
 coordinates are NOT compatible with
 NAD 1983 coordinates

Note: 1 Meter=3937/1200 U.S. Survey Feet

SKETCH OF REFERENCE TIES



Statement of evidence relative to this corner location is on back of page.

I hereby certify that this document and the data contained herein was prepared by me or under my direct supervision.

Ernest J. Rud
 Signature

12-23-10
 Date

Registration No. 9800

- Land Surveyor, Professional Engineer
 County Surveyor, County Engineer

OFFICE OF THE COUNTY RECORDER

County of _____

I hereby certify that this document was filed in the County Recorder's office at _____ M. on the _____ day of _____ A.D., 20____

County Recorder _____

BY _____ Deputy

DOCUMENT NO. _____

S1/4 CORNER, SEC. 32, T39, R24
N1/4 CORNER, SEC. 05, T38, R24

STATEMENT OF EVIDENCE

ALL OF THE ORIGINAL BEARING TREES ARE NOW GONE.

IN 1910, THE FORMER COUNTY SURVEYOR, JOHN NELSON, SET A SANDSTONE WITH A "+" IN THE TOP AT THIS CORNER. IT WAS ON LINE AND SPLIT BETWEEN THE NE AND NW CORNERS OF SEC. 5.

IN 1967, THE DNR MADE A SURVEY IN SEC. 32, T39, R24, BUT DID NOT FIND OR SET THIS CORNER. THE RECORDS SHOW THAT THEY USED A LINE AND SPLIT BETWEEN THE SE AND SW CORNERS OF SEC. 32.

IN 1979, DON HANSON, REGISTERED LAND SURVEYOR NO. 9260, USED THE BASE OF A FENCE POST IN A SURVEY OF SEC. 33, T39, R24.

IN JULY OF 1990, M.B. RUDE FOUND THE BASE OF A POINTED POST USED BY DON HANSEN. A SEARCH WAS MADE FOR HANSEN'S SANDSTONE, BUT NO EVIDENCE OF THE SANDSTONE WAS FOUND.

THE FOUND POST LOCATION FITS A SPLIT BETWEEN THE IRON PIN AT THE NE CORNER AND THE CENTERLINE INTERSECTION OF THE NORTH-SOUTH ROAD AND FENCE LINES EAST-WEST AT THE ASSUMED NW CORNER OF SEC. 5. THIS LOCATION IS 4.72 FEET SOUTH OF A STRAIGHT LINE.

THIS LOCATION WAS ACCEPTED AS THE BEST AVAILABLE EVIDENCE OF THE ORIGINAL CORNER LOCATION.

IN 2001, E.G. RUD AND SONS, INC. FOUND THIS MONUMENT AND ESTABLISHED KANABEC COUNTY COORDINATES ON THIS LOCATION.