

~~3924042~~

Index No. 3824020 and 3924042

# CERTIFICATE OF LOCATION OF GOVERNMENT CORNER

NORTH QUARTER Corner of Section 4, Township 38, Range 24, 4TH P.M.

STATE OF MINNESOTA, County of KANABEC

At the corner location shown on the sketch:  
On 05/ /2004 Found a Kanabec County Monument.

Kanabec County U.S. Survey Feet Coordinates  
NAD 1983, HARN 1996 Adjustment  
Obtained by RTK GPS Observation

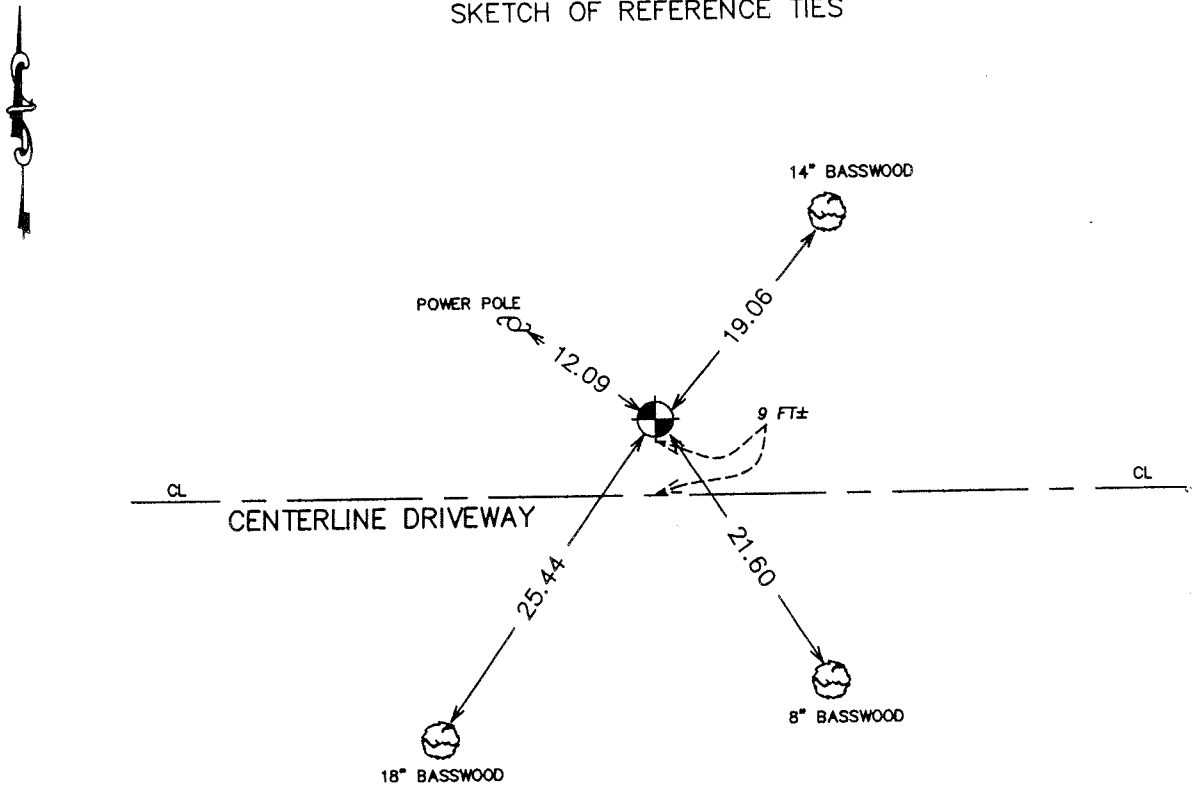
Northing= 132055.711

Easting= 388372.738

Note: NAD 1983, HARN 1996 Adjustment  
coordinates are NOT compatible with  
NAD 1983 coordinates

Note: 1 Meter=3937/1200 U.S. Survey Feet

## SKETCH OF REFERENCE TIES



Statement of evidence relative to this corner location is on back of page.

I hereby certify that this document and the data contained herein was prepared by me or under my direct supervision.

*Ernest Alred*  
Signature

6-22-04  
Date

Registration No. 9808

## OFFICE OF THE COUNTY RECORDER

County of \_\_\_\_\_

I hereby certify that this document was filed in the County Recorder's office at \_\_\_\_\_ M. on the \_\_\_\_\_ day of \_\_\_\_\_ A.D., 20 \_\_\_\_\_

County Recorder \_\_\_\_\_

STATEMENT OF EVIDENCE  
(FROM DALE ANDERSON)

All of the original bearing trees are now gone.

Records on file in the County Recorders office show that in 1910, county surveyor, John Nelson set a stone to mark this corner location in resurvey of Section 4. This stone was placed on line proportionally between the northeast and southeast corners.

In October of 1992, we ran a survey around Section 4 to locate existing monuments and lines of occupation. In September 2003, we made an hand excavatin to search for Nelson's stone or other evidence of the corner location. In the search, a pipe set by LeRoy Winner was found as well as a pipe set by the DNR. After reviewing the information with Kanabec County surveyor, Ernie Rud, Dell Rude, Don Hanson, and the DNR, the pipe set by the DNR was accepted as the perpetuated corner location and a 7/8"x24" rebar with aluminum cap was set in place inside the pipe.

(2004)

In May 2004, E.G. Rud ran a survey around Section 4. We found the monument set by Dale Anderson, and established Kanabec County Coordinates using G.P.S. equipment.