

# CERTIFICATE OF LOCATION OF GOVERNMENT CORNER

NORTH QUARTER Corner of Section 1, Township 38, Range 24, 4TH P.M.

STATE OF MINNESOTA, County of KANABEC

At the corner location shown on the sketch:

RESET MONUMENT  
AND ESTABLISHED G.P.S. COORDINATES ON ITS LOCATION.

Kanabec County U.S. Survey Feet Coordinates  
NAD 1983, HARN 1996 Adjustment  
Obtained by RTK GPS Observation

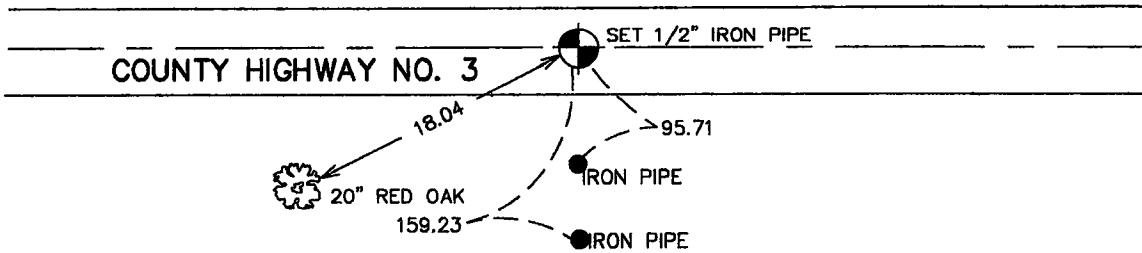
Northing= 132131.82

Easting= 404075.09

Note: NAD 1983, HARN 1996 Adjustment  
coordinates are NOT compatible with  
NAD 1983 coordinates

Note: 1 Meter=3937/1200 U.S. Survey Feet

## SKETCH OF REFERENCE TIES



Statement of evidence relative to this corner location is on back of page.

I hereby certify that this document and the data contained herein was prepared by me or under my direct supervision.

Ernest G. Reed  
Signature

9-11-2006  
Date

### OFFICE OF THE COUNTY RECORDER

County of Kanabec

I hereby certify that this document was filed in the County Recorder's office at 8:00 AM. on the

12<sup>th</sup> day of Sept A.D., 2006

County Recorder Rhonda Olson

BY \_\_\_\_\_ Deputy

Registration No. Minn No. 9808

Land Surveyor,  Professional Engineer

County Surveyor,  County Engineer

DOCUMENT NO. \_\_\_\_\_

NORTH QUARTER CORNER SECTION 36, T39, R24

**STATEMENT OF EVIDENCE**

ALL OF THE ORIGINAL GOVERNMENT BEARING TREES ARE NOW GONE.

ON AUGUST 26, 1976, M.B. RUDE MADE AN EXCAVATION 12 FEET WIDE NORTH-SOUTH AND 48 FEET LONG EAST AND WEST, 5 FEET DEEP INTO THE NATURAL GROUND AT CENTER OF EAST-WEST ROAD AND OLD FENCE LINE SOUTH WITH THE COUNTY BACKHOE.

M.B. RUDE FOUND ONE LARGE SANDSTONE WHICH FITS CENTER OF EAST-WEST ROAD AND FENCE LINE SOUTH AS WELL.

THIS WAS THE ONLY STONE FOUND IN THE EXCAVATION.

M.B. RUDE SET A CAST ALUMINUM MONUMENT 4" BELOW THE SURFACE TO REPLACE THE SANDSTONE.

ON JULY 21ST 2006, E.G RUD AND SONS RESET THIS CORNER FROM THE MEASUREMENTS TAKEN BY M.B. RUDE IN JUNE 2000 FOR RECONSTRUCTION OF CO. RD. 17. THIS POSITION FITS THE CONSTRUCTION TIES TAKEN BY KANABEC COUNTY HIGHWAY DEPT. KANABEC COUNTY COORDINATES WERE ESTABLISHED ON THIS CORNER USING G.P.S. EQUIPMENT.