

CERTIFICATE OF LOCATION OF GOVERNMENT CORNER

WEST QUARTER Corner of Section 6, Township 38, Range 23, 4TH P.M.
 STATE OF MINNESOTA, County of KANABEC

At the corner location shown on the sketch:
 On 08/ /2004 Set a Kanabec County Monument.

Kanabec County U.S. Survey Feet Coordinates
 NAD 1983, HARN 1996 Adjustment
 Obtained by RTK GPS Observation

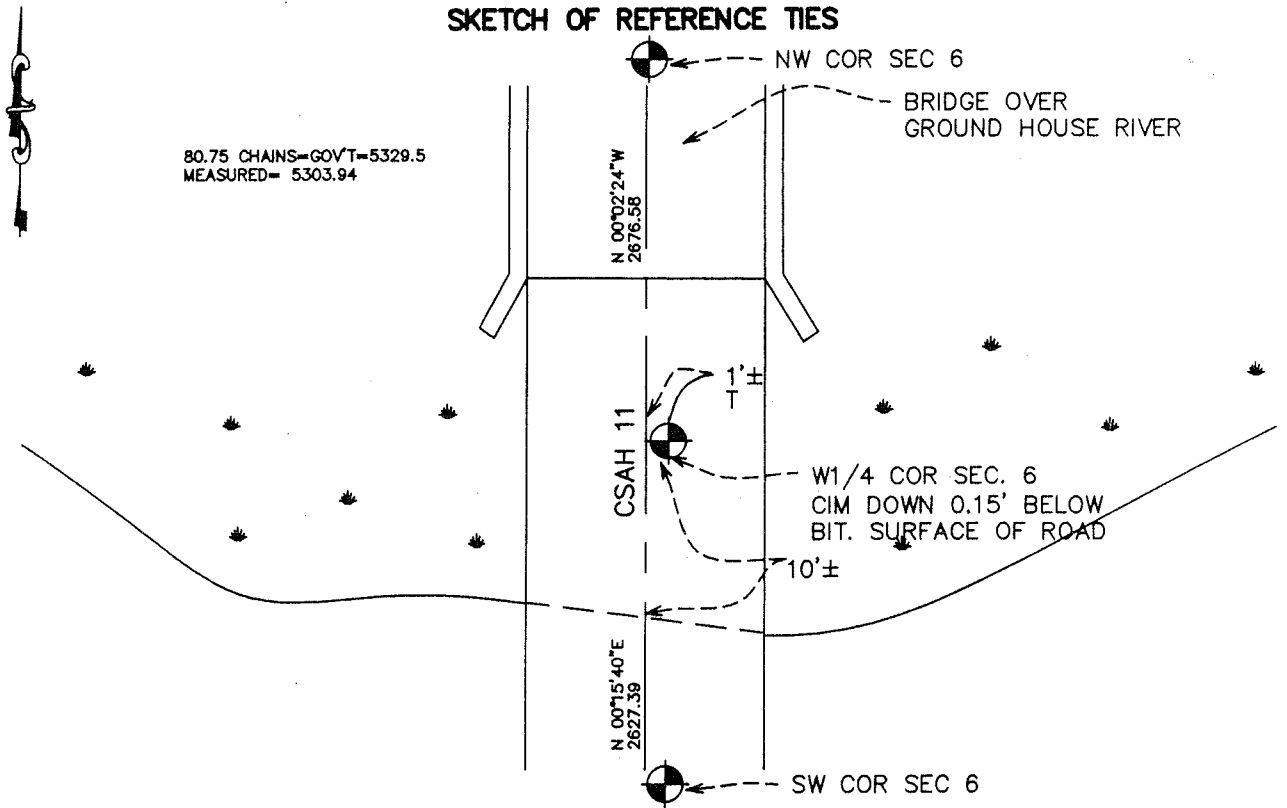
Northing= 129426.13

Easting= 406675.34

Note: NAD 1983, HARN 1996 Adjustment
 coordinates are NOT compatible with
 NAD 1983 coordinates

Note: 1 Meter=3937/1200 U.S. Survey Feet

SKETCH OF REFERENCE TIES



Statement of evidence relative to this corner location is on back of page.

I hereby certify that this document and the data contained herein was prepared by me or under my direct supervision.

Ernest Rud 9-8-2005
Signature Date

Registration No. Minn # 9808

Land Surveyor, [] Professional Engineer

[] County Surveyor, [] County Engineer

OFFICE OF THE COUNTY RECORDER

County of _____

I hereby certify that this document was filed in the County Recorder's office at _____ M. on the

_____ day of _____ A.D., 20__

County Recorder _____

BY _____ Deputy

DOCUMENT NO. _____

STATEMENT OF EVIDENCE

Per Certificate of Location No. 435, in August of 1971, John Oliver set this corner at a proportionate distance between the Northwest and Southwest corners of Section 6. This monument no longer remains as County Road No. 11 has been regraded and a new bridge constructed.

Therefor we reset this corner at a proportionate distance from the Northwest and Southwest corners of Section 6 and on the center line of County Road No. 11. This agrees with John Oliver's measurements. We established Kanabec County coordinates on this corner.