

CERTIFICATE OF LOCATION OF GOVERNMENT CORNER

NORTHWEST Corner of Section 18, Township 38, Range 23, 4TH P.M.
 NORTHEAST Corner of Section 13, Township 38, Range 24, 4TH P.M.

STATE OF MINNESOTA, County of KANABEC

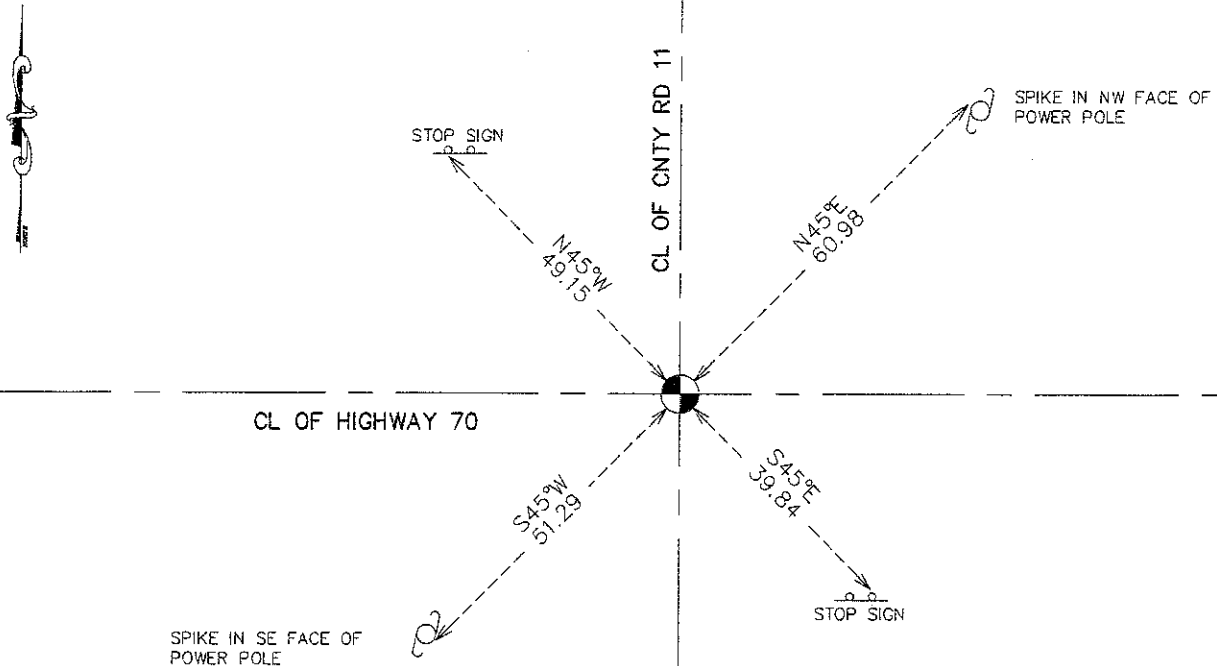
At the corner location shown on the sketch:
 FOUND A 3/4" REBAR

Kanabec County U.S. Survey Feet Coordinates
 NAD 1983, HARN 1996 Adjustment
 Obtained by RTK GPS Observation

Northing= 121603.18
 Easting= 406625.01

Note: NAD 1983, HARN 1996 Adjustment
 coordinates are NOT compatible with
 NAD 1983 coordinates
 Note: 1 Meter=3937/1200 U.S. Survey Feet

SKETCH OF REFERENCE TIES



Statement of evidence relative to this corner location is on back of page.

I hereby certify that this document and the data contained herein was prepared by me or under my direct supervision.

Ernest J. Reed 7-18-2011
 Signature Date

Registration No. 9808

Land Surveyor, Professional Engineer
 County Surveyor, County Engineer

OFFICE OF THE COUNTY RECORDER

County of _____

I hereby certify that this document was filed in the County Recorder's office at _____ M. on the _____ day of _____ A.D., 20____

County Recorder _____
 BY _____ Deputy

DOCUMENT NO. _____

NW CORNER, SEC. 18, T38, R23
NE CORNER, SEC. 13, T38, R24

STATEMENT OF EVIDENCE

THE ORIGINAL GOVERNMENT POST WAS SET BY A DEPUTY SURVEYOR SILAS BARNARD ON SEPT. 7, 1849 AND 4 BEARING TREES NOTED AS:

16" LINDEN MAPLE @ 3 LINKS BEARING N45°W
13" SUGAR MAPLE @ 32 LINKS BEARING S50°W
16" BURR OAK @ 25 LINKS BEARING S61°E
14" PINE @ 20 LINKS BEARING N30°E

ON APR. 15, 1892 JOHN NELSON MADE A SURVEY AROUND SEC. 13 WHICH IS RECORDED IN BOOK A OF SURVEYS ON PAGES 8 AND 9. JOHN NELSON REESTABLISHED THIS POST FROM S.E. TALLMAN'S TESTIMONY TO ITS LOCATION. NO NEW BEARING TREES WERE NOTED.

THE MINNESOTA DEPARTMENT OF TRANSPORTATION ROAD CONSTRUCTION PLANS FROM 1920 SHOW THE NE CORNER OF SEC. 13, T. 38, R. 24, AS BEING A PI.

IN 1982, THE MNDOT SURVEY DEPARTMENT FOUND AN IRON BAR AT THE NE CORNER OF SEC. 13, T. 38, R.24.

IN JULY OF 1996, M.B. RUDE MADE A SURVEY AROUND SEC. 7, T. 38, R. 23 TO LOCATE EXISTING MONUMENTS, LINES OF OCCUPATION AND ESTABLISH SEARCH AREAS.

ON JULY 23, 1996, HE FOUND A 3/4" IRON PIN AND ACCEPTED IT TO BE THE PERPETUATED CORNER LOCATION. NO EXCAVATION WAS DONE AT THIS CORNER BECAUSE IT FALLS IN A ROAD CUT SECTION.

M.B. RUDE TOOK TIES AND RECORDED HIS FINDS ON CERTIFICATE OF LOCATION NO. 934.

ON APR. 19, 2011 E.G. RUD AND SONS, INC. LOCATED THIS MONUMENT TOOK NEW TIES AND KANABEC COUNTY COORDINATES WERE ESTABLISHED ON THIS POSITION.