

CERTIFICATE OF LOCATION OF GOVERNMENT CORNER

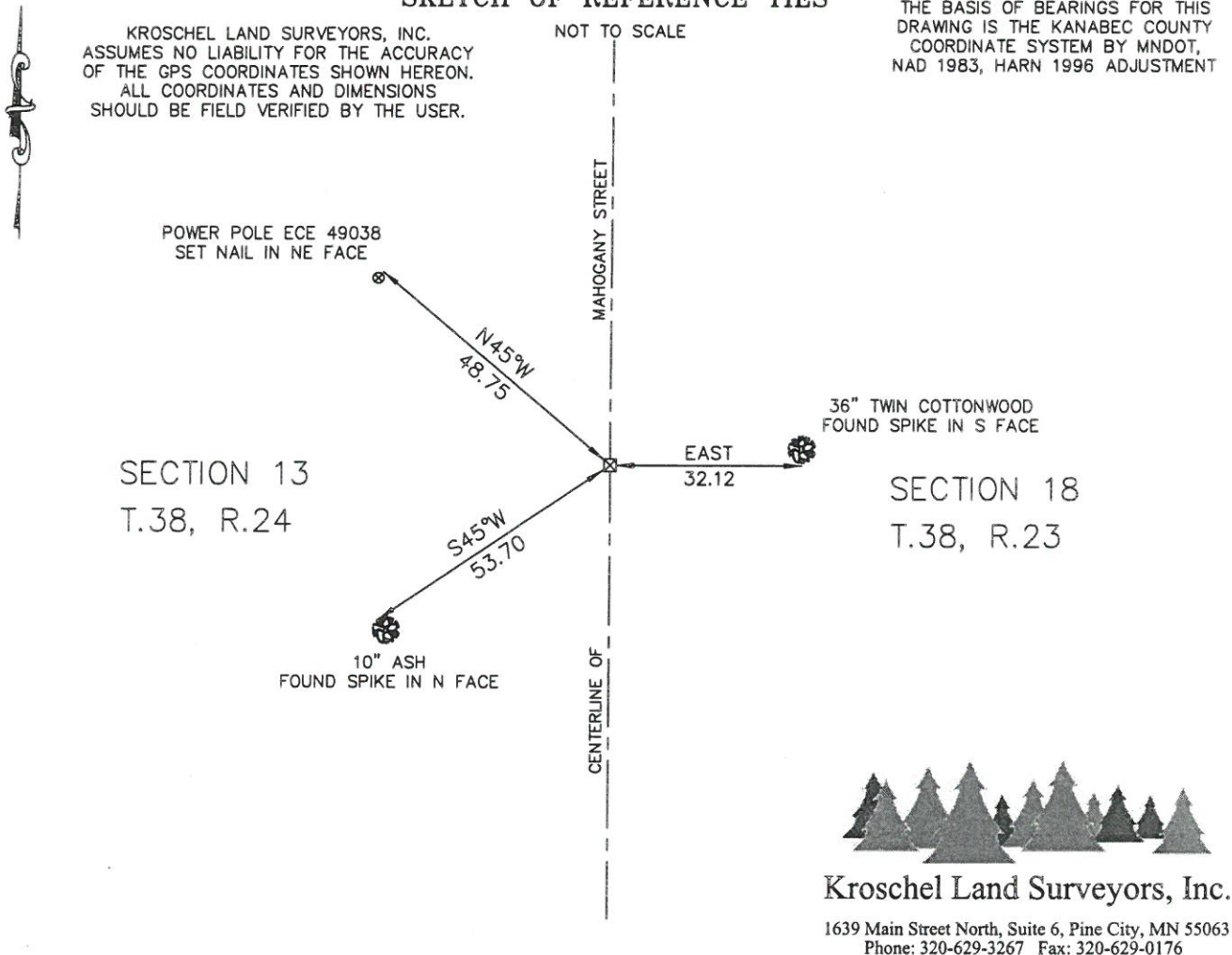
East Quarter Corner of Section 13, Township 38 North, Range 24 West,
4th Principal Meridian, Kanabec County, State of Minnesota

At the corner location shown on the sketch:
On 5/11/2016 Found a Mag Nail in pavement.
On 6/06/2016 reset a Mag Nail in Blacktop patch.

Kanabec County U.S. Survey Feet Coordinates
NAD 1983, HARN 1996 Adjustment
Obtained by RTK GPS observation
Northing: 118959.3809
Easting: 406619.2198

Note: NAD 1983, HARN 1996 Adjustment
coordinates are NOT compatible with
NAD 1983 coordinates
Note: 1 Meter = 3937/1200 U.S. Survey Feet

SKETCH OF REFERENCE TIES



Statement of evidence relative to this corner location is on back of page.

I hereby certify that this survey, plan, or report was prepared by me or under my direct supervision, that the United States public land survey monument record is correct and complete to the best of my knowledge and belief, and that I am a duly Licensed Land Surveyor under the laws of the State of Minnesota.


Tyler J. Kroschel 11-9-2016
Date

License No. 44490

Land Surveyor County Surveyor

OFFICE OF THE COUNTY RECORDER
County of Kanabec

I hereby certify that this document was filed in the
County Recorder's office at _____ .M. on the
_____ day of _____ A.D., 20____

County Recorder _____

By _____, Deputy

DOCUMENT NO. _____

Statement of Evidence:

In September of 1849, Deputy Surveyor John M. Smith set a post to mark the East Quarter Corner of Section 13, Township 38 North, Range 24 West, 4th Principal Meridian.

Reference ties were taken to:

- 10 inch Pine at North 58 degrees West a distance of 28 links
- 12 inch Pine at South 57 degrees East a distance of 6 links

All of the original Government corner evidence was searched for. None was found.

1892—County Surveyor John Nelson subdivided Section 13, T.38, R.24, per the records of the Kanabec County Highway Department. It appears Nelson set a post at a lost position and made new witness ties.

1893—County Surveyor John Nelson subdivided Section 18, T.38, R.23, per the records of the Kanabec County Highway Department. He makes a reference to his previous survey in Section 13, T.38, R.24 for the west line of Section 18.

In May 2016, I made a retracement survey along County Highway 11, in Sections 13 and 24, Township 38 North, Range 24 West, and Sections 18 and 19, Township 38 North, Range 23 West, 4th Principal Meridian for the Kanabec County Highway Department to locate existing monuments, lines of occupation and establish search areas.

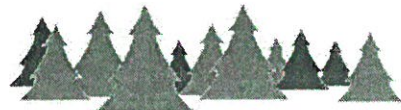
On May 11, 2016, we found a mag nail at the blacktop surface that was placed by former County Surveyor Ernie Rud.

On May 11, 2016, we made a 10' x 36' x 4.5' deep excavation with the County Backhoe centered on the found mag nail. No additional evidence of the corner was found in the excavation. The found Mag Nail was determined to be the best available evidence of the original corner location.

On June 6, 2016 we reset a Mag Nail at the found Mag Nail location. Established reference ties and assigned Kanabec County Coordinates.

I measure 2643.80 feet to the north (Nelson 39.98 chains or 2638.68 feet).

I measure 2641.41 feet to the south (Nelson 39.98 chains or 2638.68 feet).



Kroschel Land Surveyors, Inc.

1639 Main Street North, Suite 6, Pine City, MN 55063
Phone: 320-629-3267 Fax: 320-629-0176