

CERTIFICATE OF LOCATION OF GOVERNMENT CORNER

Northeast Corner of Section 24, Township 38 North, Range 24 West,
4th Principal Meridian, Kanabec County, State of Minnesota

At the corner location shown on the sketch:
On 5/11/2016 Found a Mag Nail in pavement.
On 6/06/2016 reset a Mag Nail in Blacktop patch.

Kanabec County U.S. Survey Feet Coordinates
NAD 1983, HARN 1996 Adjustment
Obtained by RTK GPS observation
Northing: 116317.9827
Easting: 406613.0899

Note: NAD 1983, HARN 1996 Adjustment
coordinates are NOT compatible with
NAD 1983 coordinates
Note: 1 Meter = 3937/1200 U.S. Survey Feet

SKETCH OF REFERENCE TIES



KROSCHER LAND SURVEYORS, INC.
ASSUMES NO LIABILITY FOR THE ACCURACY
OF THE GPS COORDINATES SHOWN HEREON.
ALL COORDINATES AND DIMENSIONS
SHOULD BE FIELD VERIFIED BY THE USER.

NOT TO SCALE

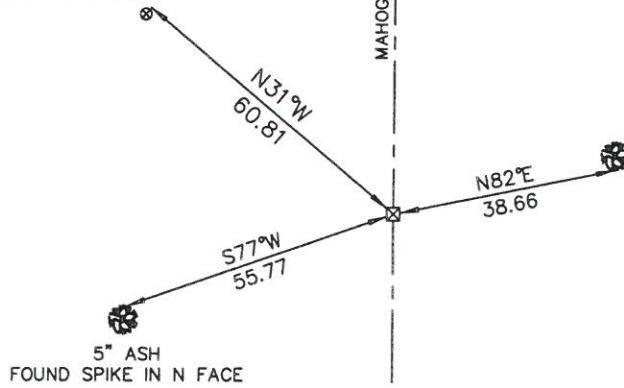
THE BASIS OF BEARINGS FOR THIS
DRAWING IS THE KANABEC COUNTY
COORDINATE SYSTEM BY MNDOT,
NAD 1983, HARN 1996 ADJUSTMENT

SECTION 13
T.38, R.24
POWER POLE ECE 49059
SET NAIL IN NE FACE

SECTION 18
T.38, R.23

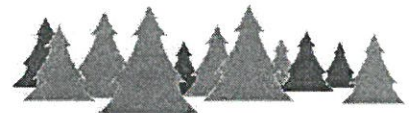
SECTION 24
T.38, R.24

SECTION 19
T.38, R.23



6" OAK
SET NAIL IN S FACE

5" ASH
FOUND SPIKE IN N FACE



Kroschel Land Surveyors, Inc.
1639 Main Street North, Suite 6, Pine City, MN 55063
Phone: 320-629-3267 Fax: 320-629-0176

Statement of evidence relative to this corner location is on back of page.

I hereby certify that this survey, plan, or report was prepared by me or under my direct supervision, that the United States public land survey monument record is correct and complete to the best of my knowledge and belief, and that I am a duly Licensed Land Surveyor under the laws of the State of Minnesota.

OFFICE OF THE COUNTY RECORDER
County of Kanabec

I hereby certify that this document was filed in the County Recorder's office at _____ .M. on the _____ day of _____ A.D., 20____

Tyler J. Kroschel
License No. 44490
 Land Surveyor County Surveyor
Date 11-9-2016

County Recorder _____
By _____, Deputy
DOCUMENT NO. _____

Statement of Evidence:

In September of 1849, Deputy Surveyor John M. Smith set a post to mark the Northeast Corner of Section 24, Township 38 North, Range 24 West, 4th Principal Meridian.

Reference ties were taken to:

- 16 inch Double Maple at North 15 degrees West a distance of 22 links
- 12 inch Pine at South 1 degree West a distance of 19 links
- 8 inch Ironwood at North 58 degrees East a distance of 9 links
- 13 inch Pine at South 27 degrees East a distance of 41 links

All of the original Government corner evidence was searched for. None was found.

1892—County Surveyor John Nelson subdivided Section 13, T.38, R.24, per the records of the Kanabec County Highway Department. Nelson found the Government trees and made new witnesses. He does not state what he set at the corner.

1893—County Surveyor John Nelson subdivided Section 18, T.38, R.23, per the records of the Kanabec County Highway Department. He makes a reference to his previous survey in Section 13, T.38, R.24 for the west line of Section 18.

1909—County Surveyor John Nelson subdivided Section 19, T.38, R.23, per the records of the Kanabec County Highway Department. He found a Sandstone marked "x" at the Northwest corner of Section 19.

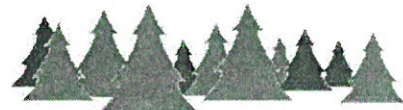
In May 2016, I made a retracement survey along County Highway 11, in Sections 13 and 24, Township 38 North, Range 24 West, and Sections 18 and 19, Township 38 North, Range 23 West, 4th Principal Meridian for the Kanabec County Highway Department to locate existing monuments, lines of occupation and establish search areas.

On May 11, 2016, we found a mag nail at the blacktop surface that was placed by former County Surveyor Ernie Rud.

On May 11, 2016, we made a 10' x 36' x 3' deep excavation with the County Backhoe 23 feet south to 13 feet north of the found mag nail. No additional evidence of the corner was found in the excavation. The found Mag Nail was determined to be the best available evidence of the original corner location.

On June 6, 2016 we reset a Mag Nail at the found Mag Nail location. Established reference ties and assigned Kanabec County Coordinates.

- I measure 2641.41 feet to the north (Nelson 39.98 chains or 2638.68 feet).
- I measure 2627.88 feet to the south (Nelson 39.68 chains or 2618.88 feet).
- I measure 2630.76 feet to the east (1893—Nelson 39.86 chains or 2630.76 feet)
(1909—Nelson 39.90 chains or 2633.40 feet)
- I measure 2601.61 feet to the west (Nelson 39.48 chains or 2605.68 feet)



Kroschel Land Surveyors, Inc.

1639 Main Street North, Suite 6, Pine City, MN 55063
Phone: 320-629-3267 Fax: 320-629-0176