

CERTIFICATE OF LOCATION OF GOVERNMENT CORNER

East Quarter Corner of Section 24, Township 38 North, Range 24 West,
4th Principal Meridian, Kanabec County, State of Minnesota

At the corner location shown on the sketch:
On 5/11/2016 Found a Mag Nail in pavement.
On 6/06/2016 reset a Mag Nail in Blacktop patch.

Kanabec County U.S. Survey Feet Coordinates
NAD 1983, HARN 1996 Adjustment
Obtained by RTK GPS observation
Northing: 113690.1015
Easting: 406613.0283

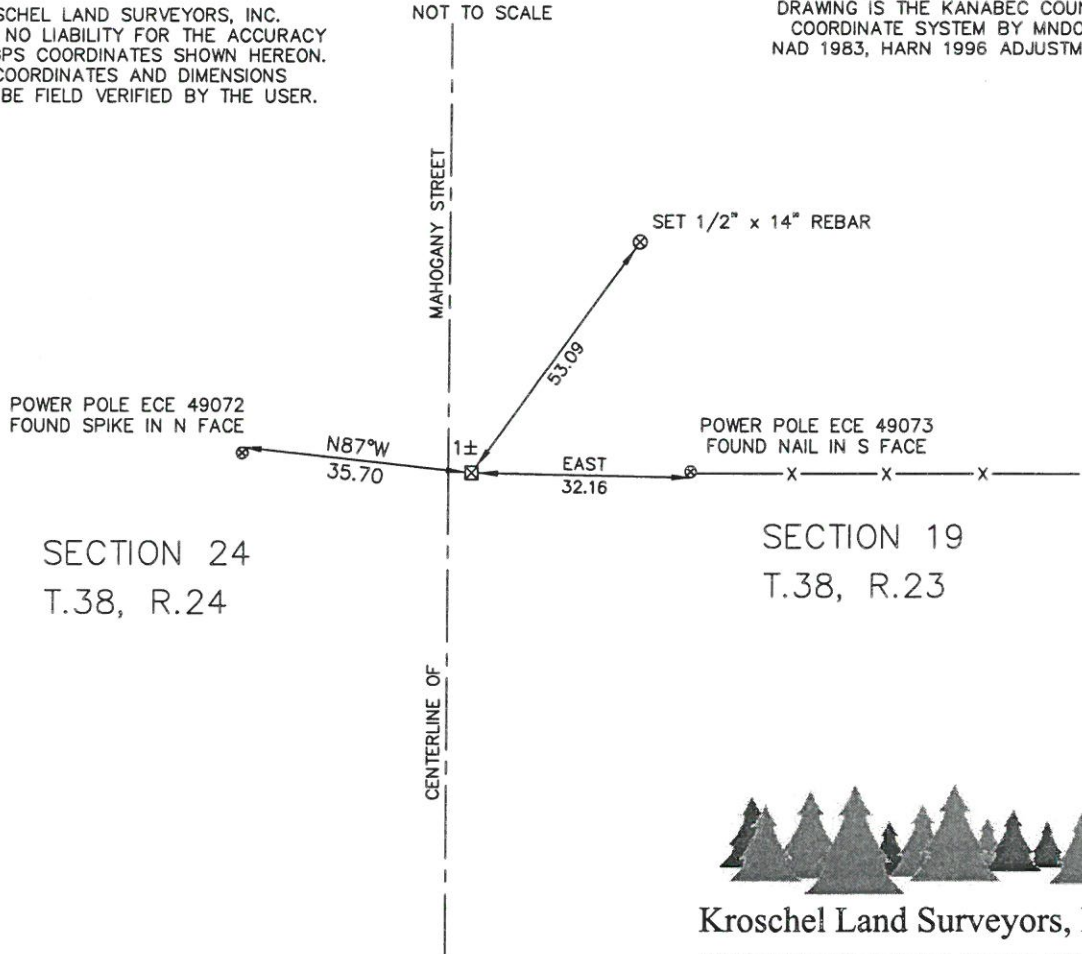
Note: NAD 1983, HARN 1996 Adjustment
coordinates are NOT compatible with
NAD 1983 coordinates
Note: 1 Meter = 3937/1200 U.S. Survey Feet

SKETCH OF REFERENCE TIES

KROSCHEL LAND SURVEYORS, INC.
ASSUMES NO LIABILITY FOR THE ACCURACY
OF THE GPS COORDINATES SHOWN HEREON.
ALL COORDINATES AND DIMENSIONS
SHOULD BE FIELD VERIFIED BY THE USER.

NOT TO SCALE

THE BASIS OF BEARINGS FOR THIS
DRAWING IS THE KANABEC COUNTY
COORDINATE SYSTEM BY MNDOT,
NAD 1983, HARN 1996 ADJUSTMENT



Kroschel Land Surveyors, Inc.
1639 Main Street North, Suite 6, Pine City, MN 55063
Phone: 320-629-3267 Fax: 320-629-0176

Statement of evidence relative to this corner location is on back of page.

I hereby certify that this survey, plan, or report was prepared by me or under my direct supervision, that the United States public land survey monument record is correct and complete to the best of my knowledge and belief, and that I am a duly Licensed Land Surveyor under the laws of the State of Minnesota.

Tyler J. Kroschel
License No. 44490
 Land Surveyor County Surveyor
Date: 11-9-2016

OFFICE OF THE COUNTY RECORDER
County of Kanabec

I hereby certify that this document was filed in the County Recorder's office at _____ .M. on the _____ day of _____ A.D., 20____
County Recorder _____
By _____, Deputy
DOCUMENT NO. _____

Statement of Evidence:

In September of 1849, Deputy Surveyor John M. Smith set a post to mark the East Quarter Corner of Section 24, Township 38 North, Range 24 West, 4th Principal Meridian.

Reference ties were taken to:

16 inch Elm at South 85 degrees West a distance of 19 links

9 inch Maple at North 70 degree East a distance of 9 links

All of the original Government corner evidence was searched for. None was found.

1909— County Surveyor John Nelson subdivided Section 19, T.38, R.23, per the records of the Kanabec County Highway Department. He set a Stone marked "X" at a lost position.

1936— Right of Way map for Trunk Highway 65 shows the corner at the intersection of the Road north-south and fence east-west. The map shows a distance of 1713.5 feet to the centerline of Trunk Highway 65. Today I measure 1715.10 feet.

In May 2016, I made a retracement survey along County Highway 11, in Sections 13 and 24, Township 38 North, Range 23 West, and Sections 18 and 19, Township 38 North, Range 24 West, 4th Principal Meridian for the Kanabec County Highway Department to locate existing monuments, lines of occupation and establish search areas.

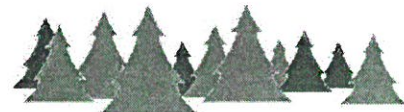
On May 11, 2016, we found a mag nail at the blacktop surface that was placed by former County Surveyor Ernie Rud.

On May 12, 2016, we made a 10' x 23' x 3' deep excavation with the County Backhoe 15 feet south to 8 feet north of the found mag nail. No additional evidence of the corner was found in the excavation. The found Mag Nail was determined to be the best available evidence of the original corner location.

On June 6, 2016 we reset a Mag Nail at the found Mag Nail location. This location fits the fence line running east. Established reference ties and assigned Kanabec County Coordinates.

I measure 2627.88 feet to the north (Nelson 39.68 chains or 2618.88 feet).

I measure 2628.09 feet to the south (Nelson 39.68 chains or 2618.88 feet)(MNDOT map 2631.8 feet).



Kroschel Land Surveyors, Inc.

1639 Main Street North, Suite 6, Pine City, MN 55063
Phone: 320-629-3267 Fax: 320-629-0176