

CERTIFICATE OF LOCATION OF GOVERNMENT CORNER

NORTHEAST QUARTER Corner of Section 25, Township 38, Range 24, 4TH P.M.

STATE OF MINNESOTA, County of KANABEC

At the corner location shown on the sketch:
On 04/26/2002 Set a KANABEC COUNTY MONUMENT.

Kanabec County U.S. Survey Feet Coordinates
NAD 1983, HARN 1996 Adjustment
Obtained by RTK GPS Observation

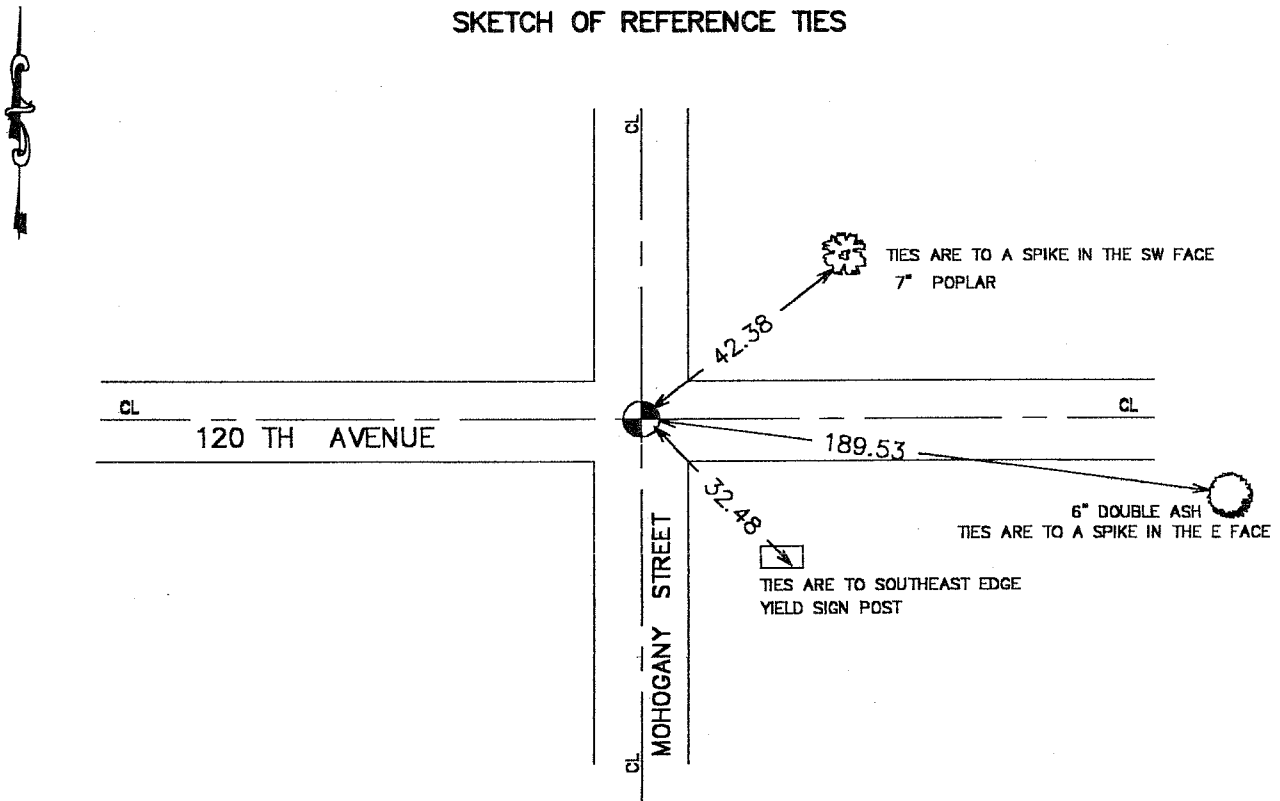
Northing= 111062.159

Easting= 406613.008

Note: NAD 1983, HARN 1996 Adjustment
coordinates are NOT compatible with
NAD 1983 coordinates

Note: 1 Meter=3937/1200 U.S. Survey Feet

SKETCH OF REFERENCE TIES



Statement of evidence relative to this corner location is on back of page.

I hereby certify that this document and the data contained herein was prepared by me or under my direct supervision.

Ernest J. Rud
Signature

1-21-2003
Date

Registration No. 9808

Land Surveyor, Professional Engineer

County Surveyor, County Engineer

OFFICE OF THE COUNTY RECORDER

County of _____

I hereby certify that this document was filed in the County Recorder's office at _____ M. on the _____ day of _____ A.D., 20____

County Recorder _____

BY _____ Deputy

DOCUMENT NO. _____

STATEMENT OF EVIDENCE

Original corner was set by Silas Bernard in July of 1855. Bearing trees no longer remain.

John Nelson County Surveyor surveyed Section 25 on December 13, 1904 as recorded Book 2 of surveys Page 12. On November 4, 1901 John Nelson also did a road survey.

On April 5, 2002 we excavated a 20 foot by 20 foot hole at centerline / centerline. Excavation revealed a mixture of soil which points to previous excavation. Culvert running from Southwest to Northeast across this intersection was probably the reason for excavation and loss of corner. Set corner at our location, took ties and set county coordinates for corner position.