

CERTIFICATE OF LOCATION OF GOVERNMENT CORNER

EAST CORNER Corner of Section 25, Township 38, Range 24, 4TH P.M.
STATE OF MINNESOTA, County of KANABEC

At the corner location shown on the sketch:
On 04/26/2002 Set a KANABEC COUNTY MONUMENT.

Kanabec County U.S. Survey Feet Coordinates
NAD 1983, HARN 1996 Adjustment
Obtained by RTK GPS Observation

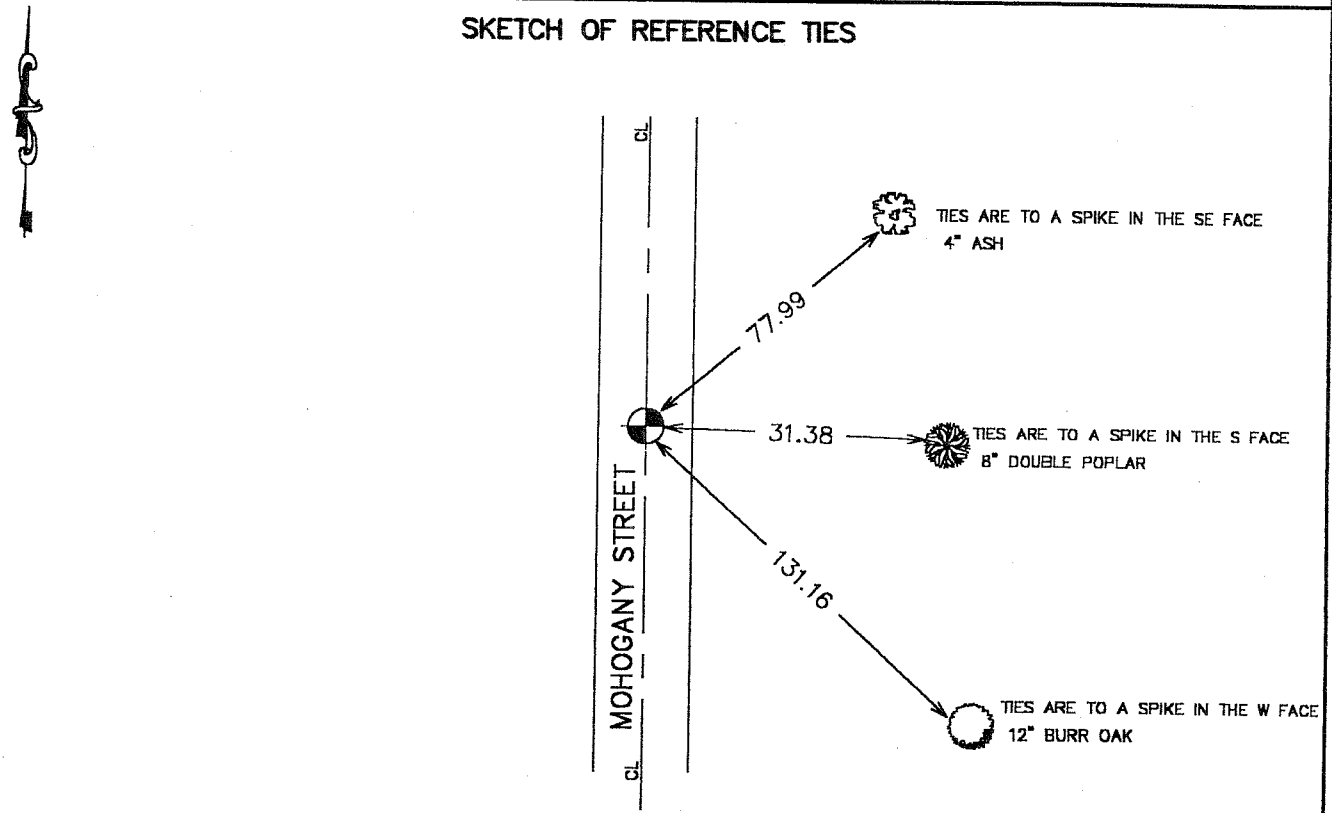
Northing= 108431.470

Easting= 406598.348

Note: NAD 1983, HARN 1996 Adjustment
coordinates are NOT compatible with
NAD 1983 coordinates

Note: 1 Meter=3937/1200 U.S. Survey Feet

SKETCH OF REFERENCE TIES



Statement of evidence relative to this corner location is on back of page.

I hereby certify that this document and the data contained herein was prepared by me or under my direct supervision.

Ernest L. Red 1-16-2003
Signature Date

Registration No. 9808

- Land Surveyor, [] Professional Engineer
- [] County Surveyor, [] County Engineer

OFFICE OF THE COUNTY RECORDER

County of _____

I hereby certify that this document was filed in the County Recorder's office at _____ M. on the _____ day of _____ A.D., 20____

County Recorder _____

BY _____ Deputy

DOCUMENT NO. _____

STATEMENT OF EVIDENCE

Original corner was set by Silas Bernard in July of 1855. Bearing trees no longer remain.

On November 4, 1901, John Nelson (County Surveyor) did a road survey from the Southeast corner to the South Quarter corner to the center of Section and terminated. Recorded in Book 2 of surveys Page 12. On December 13, 1904 John Nelson surveyed Section 25 as recorded in Book 2, Page 34. Notes indicate east line was established in previous survey.

On April 5, 2002 we did a survey around Section 25, tying in occupation lines and setting control. On April 26, 2002 we excavated a 10 foot by 10 foot hole on centerline of Mohogany Street. At 12 inches below surface we found a 6 inch by 6 inch by 18 inch sandstone with a chiseled "x" on top. This was on centerline of street and East extension of occupation line. Set Kanabec County Monument, took ties, and established County Coordinates for corner.