

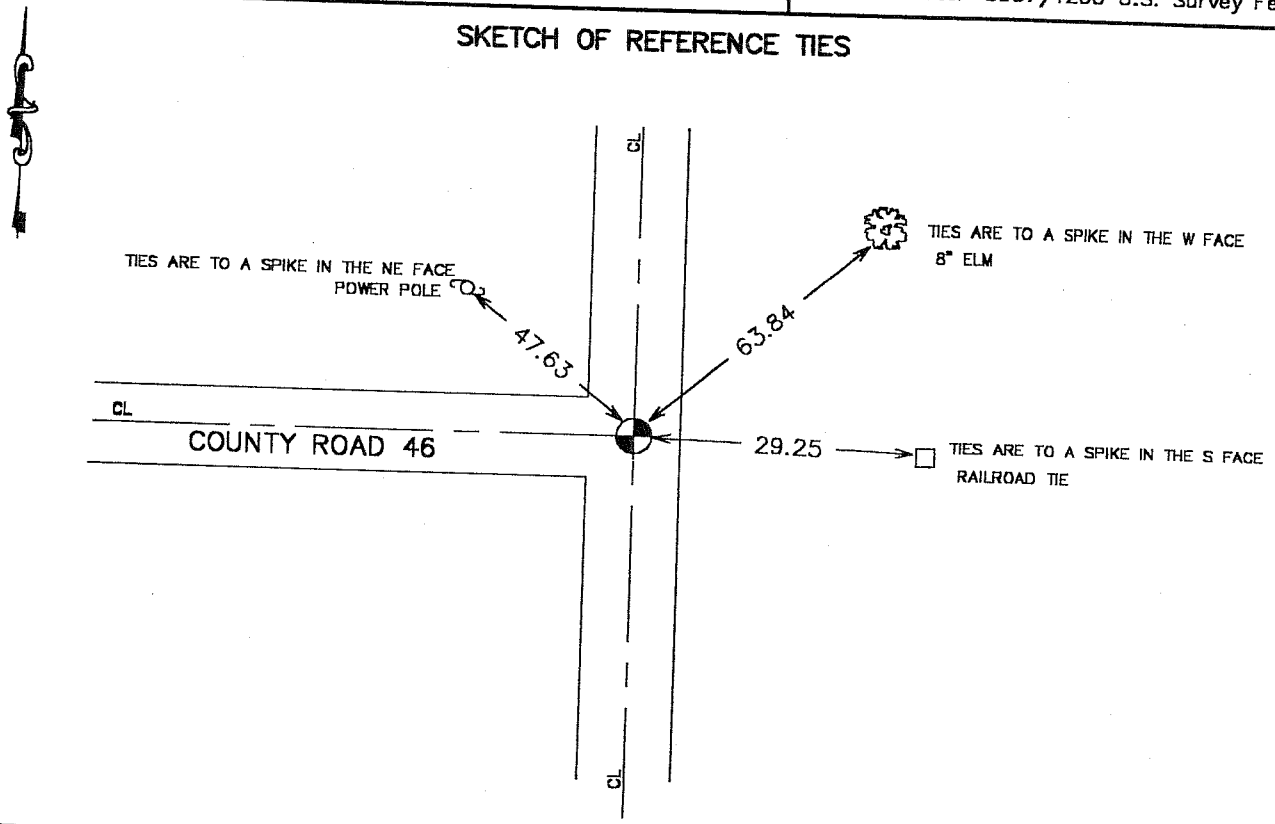
# CERTIFICATE OF LOCATION OF GOVERNMENT CORNER

SOUTHEAST CORNER Corner of Section 25, Township 38, Range 24, 4TH P.M.  
 STATE OF MINNESOTA, County of KANABEC

At the corner location shown on the sketch:  
 On 04/26/2002 Set a KANABEC COUNTY MONUMENT.

Kanabec County U.S. Survey Feet Coordinates  
 NAD 1983, HARN 1996 Adjustment  
 Obtained by RTK GPS Observation  
 Northing= 105804.338  
 Easting= 406585.672  
 Note: NAD 1983, HARN 1996 Adjustment  
 coordinates are NOT compatible with  
 NAD 1983 coordinates  
 Note: 1 Meter=3937/1200 U.S. Survey Feet

## SKETCH OF REFERENCE TIES



Statement of evidence relative to this corner location is on back of page.

I hereby certify that this document and the data contained herein was prepared by me or under my direct supervision.

Ernest J. Rud 1-16-2003  
Signature Date

Registration No. 9808

- Land Surveyor,     Professional Engineer  
 County Surveyor,     County Engineer

### OFFICE OF THE COUNTY RECORDER

County of \_\_\_\_\_  
 I hereby certify that this document was filed in the County Recorder's office at \_\_\_\_\_ M. on the \_\_\_\_\_ day of \_\_\_\_\_ A.D., 20\_\_\_\_  
 County Recorder \_\_\_\_\_  
 BY \_\_\_\_\_ Deputy

DOCUMENT NO. \_\_\_\_\_

## STATEMENT OF EVIDENCE

Original corner was set by Silas Bernard in July of 1855. Bearing trees no longer remain.

On November 4, 1901, John Nelson (County Surveyor) did a road survey from the Southeast corner to the South Quarter corner to the center of Section and terminated. Recorded in Book 2 of surveys Page 12. On December 13, 1904 John Nelson surveyed Section 25 as recorded in Book 2, Page 34. Notes indicate a stone at the Southeast corner of Section 25.

On April 5, 2002 we did a survey around Section 25, tying in occupation lines and setting control. On April 26, 2002 we excavated a 12 foot by 12 foot hole at road intersections. We found 12 inch square stone with a chiseled "x". We set a Kanabec County Monument, took ties, and established county coordinates for corner. Position falls on centerline of North-South road, on centerline road to west and fence line to the East.