

CERTIFICATE OF LOCATION OF GOVERNMENT CORNER

WEST QUARTER Corner of Section 31, Township 38, Range 23, 4TH P.M.
 EAST QUARTER Corner of Section 36, Township 38, Range 24, 4TH P.M.

STATE OF MINNESOTA, County of KANABEC

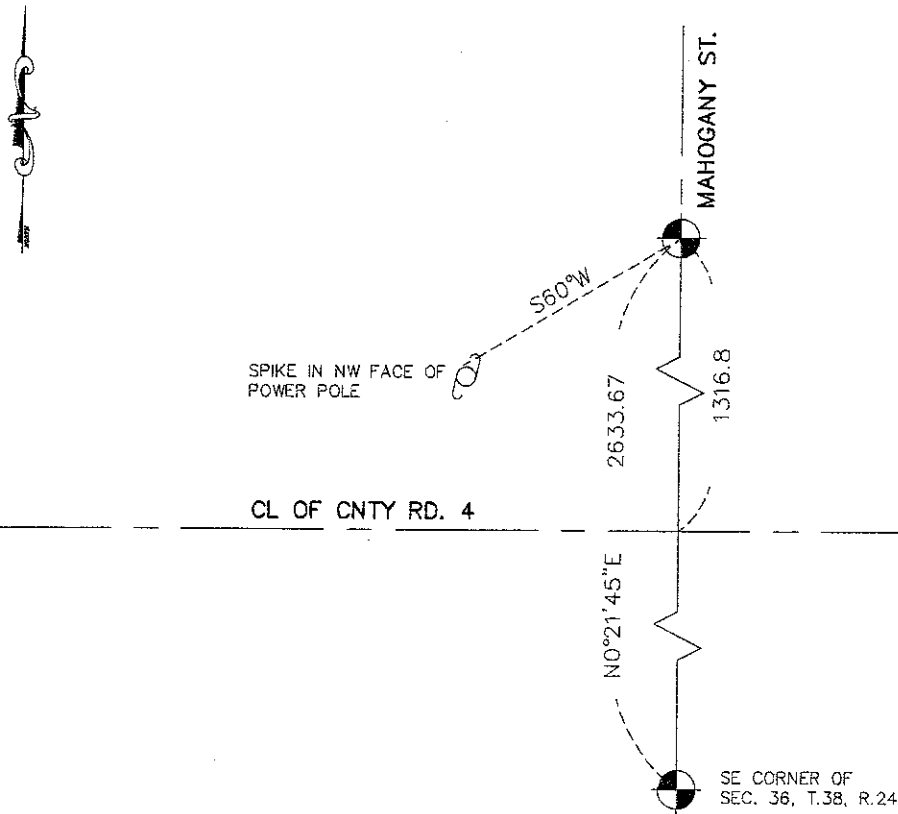
At the corner location shown on the sketch:
 SET A #7 REBAR 24" LONG IN THE CENTERLINE OF ROAD
 6" BELOW SURFACE.

Kanabec County U.S. Survey Feet Coordinates
 NAD 1983, HARN 1996 Adjustment
 Obtained by RTK GPS Observation

Northing= 103170.77
 Easting= 406569.04

Note: NAD 1983, HARN 1996 Adjustment
 coordinates are NOT compatible with
 NAD 1983 coordinates
 Note: 1 Meter=39.37, 1200 U.S. Survey Feet

SKETCH OF REFERENCE TIES



Statement of evidence relative to this corner location is on back of page.

I hereby certify that this document and the data contained herein was prepared by me or under my direct supervision.

Ernest J. Rud 7-18-2011
 Signature Date

Registration No. 9808

- Land Surveyor, Professional Engineer
 County Surveyor, County Engineer

OFFICE OF THE COUNTY RECORDER

County of _____

I hereby certify that this document was filed in the County Recorder's office at _____ M. on the _____ day of _____ A.D., 20____

County Recorder _____

BY _____ Deputy

DOCUMENT NO. _____

W1/4 CORNER, SEC. 31, T38, R23
E1/4 CORNER, SEC. 36, T38, R24

STATEMENT OF EVIDENCE

THE ORIGINAL GOVERNMENT POST WAS SET BY THE DEPUTY SURVEYOR IN THE SURVEY OF THE TOWNSHIP BOUNDARIES ON SEPT. 7, 1849 AND 2 BEARING TREES NOTED AS:

12" LINDEN MAPLE @ 14 LINKS BEARING S65°W

10" ELM @ 9 LINKS BEARING N40°E

NO VISIBLE EVIDENCE REMAINS FOR THE CORNER OR BEARING TREES TODAY.

ON DEC. 10, 1901 JOHN NELSON RECORDED A SURVEY OF SEC. 31, T.38, R.23 ON PAGE 3 OF BOOK 2 OF 2 OF SURVEYS IN KANABEC COUNTY OFFICES. AT THAT TIME JOHN STATED THAT ALL CORNERS HAD SUBSTANTIAL CORNERS AND RECORDED DISTANCES BETWEEN THE NW, W1/4 AND SW CORNERS AT 39.74 CHAINS (2622.84 FEET) RESPECTIVELY.

NO OTHER RECORDS OF SURVEYS COULD BE FOUND.

COUNTY ROAD NO. 4 RUNS ON THE E-W 1/16TH LINE IN THE SW 1/4 OF SEC. 31 AND THE SE 1/4 OF SEC. 36.

TODAY WE MEASURE THE DISTANCE FROM THE NE CORNER OF SEC. 36 TO THE SE CORNER OF SEC. 36 TO BE 5267.34 FEET.

ON APR. 11, 2011 E.G. RUD AND SONS, INC. SET A #7 REBAR WITH AN ALUMINUM CAP ON LINE AND EQUIDISTANT BETWEEN THE NE AND SE CORNERS OF SEC. 36. THE CENTERLINE OF COUNTY RD NO.4 WAS TIED IN AND WAS WITHIN 0.1 FOOT OF BEING ON THE 1/16TH LINE. TIES WERE TAKEN AND KANABEC COUNTY COORDINATES WERE ESTABLISHED ON THIS POSITION.