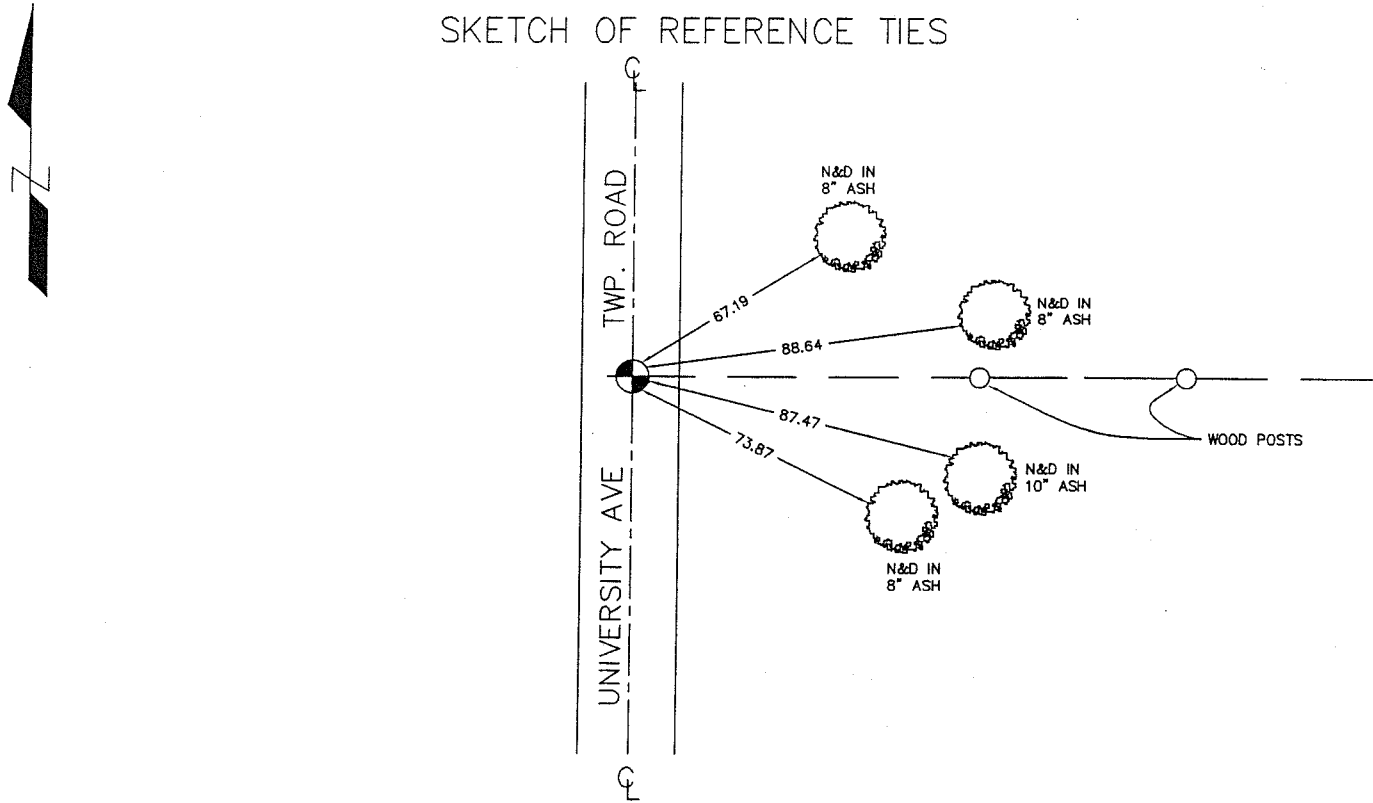


CERTIFICATE OF LOCATION OF GOVERNMENT CORNER

SW _____ CORNER OF SECTION 31, TOWNSHIP 38, RANGE 23, 24 4TH PM.
 STATE OF MINNESOTA, COUNTY OF KANABEC

AT THE CORNER LOCATION SHOWN ON THE SKETCH: ON 02/ /05 FOUND KANABEC COUNTY MONUMENT (ISANTI CO. CAST IRON MONUMENT)	KANABEC COUNTY U.S. SURVEY FEET COORDINATES NAD 1983, HARN 1996 ADJUSTMENT OBTAINED BY RTK GPS OBSERVATION NOTE: NAD 1983, HARN 1996 ADJUSTMENT COORDINATES ARE NOT COMPATIBLE WITH NAD 1983 COORDINATES NOTE: 1 METER = $\frac{3937}{200}$ U.S. SURVEY FEET
	NORTHING = <u>100537.10</u> EASTING = <u>406552.34</u>

SKETCH OF REFERENCE TIES



STATEMENT OF EVIDENCE RELATIVE TO THIS CORNER LOCATION IS ON THE BACK OF THIS PAGE

I HEREBY CERTIFY THAT THIS DOCUMENT AND THE DATA CONTAINED HEREIN WAS PREPARED BY ME OR UNDER MY DIRECT SUPERVISION.

Ernest J. Rud 11-18-2005
 SIGNATURE DATE

REGISTRATION NO. Miss No 9808

- LAND SURVEYOR COUNTY SURVEYOR
 PROF. ENGINEER COUNTY ENGINEER

OFFICE OF THE COUNTY RECORDER

COUNTY OF _____

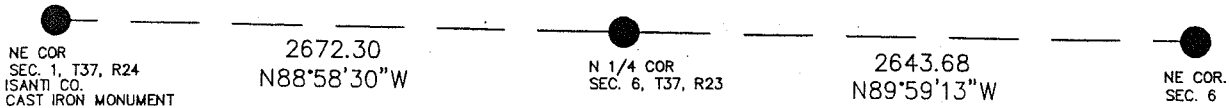
I HEREBY CERTIFY THAT THIS DOCUMENT WAS FILED IN THE COUNTY RECORDER'S OFFICE AT _____ M. ON THE _____ DAY OF _____, 2____.

COUNTY RECORDER _____

BY _____, DEPUTY

DOCUMENT NO. _____

STATEMENT OF EVIDENCE



FROM ISANTI COUNTY TIE SHEET:

According to Book B of Survey Records, page 90, on file in the office of the Isanti County Recorder, a survey by A.W. Holm, surveyor, involving Section 6, T 37, R 23, dated September 4, 1902, noted "NW cor rock 8" x 8" x 2'."

On June 24, 1988, we excavated and found a stain from topsoil and gravel backfill— stain appears longer to the south as though stone would have been drug southerly. Also found chunks of stone in stain area. We took reference ties to the stain location.

Local resident Lloyd Nelson, said that he seems to recall story of stone being bladed out by grader.

On July 30, 1996, we set an Isanti County cast iron monument for the NE corner of Section 1, T 37, R 24, at the location of the stain, and took additional reference ties.

In February 2005, E.G. Rud's Land Surveying established Kanabec County coordinates on this location using GPS equipment.