

CERTIFICATE OF LOCATION OF GOVERNMENT CORNER

NORTH QUARTER Corner of Section 7, Township 39, Range 24, 4TH P.M.
STATE OF MINNESOTA, County of KANABEC

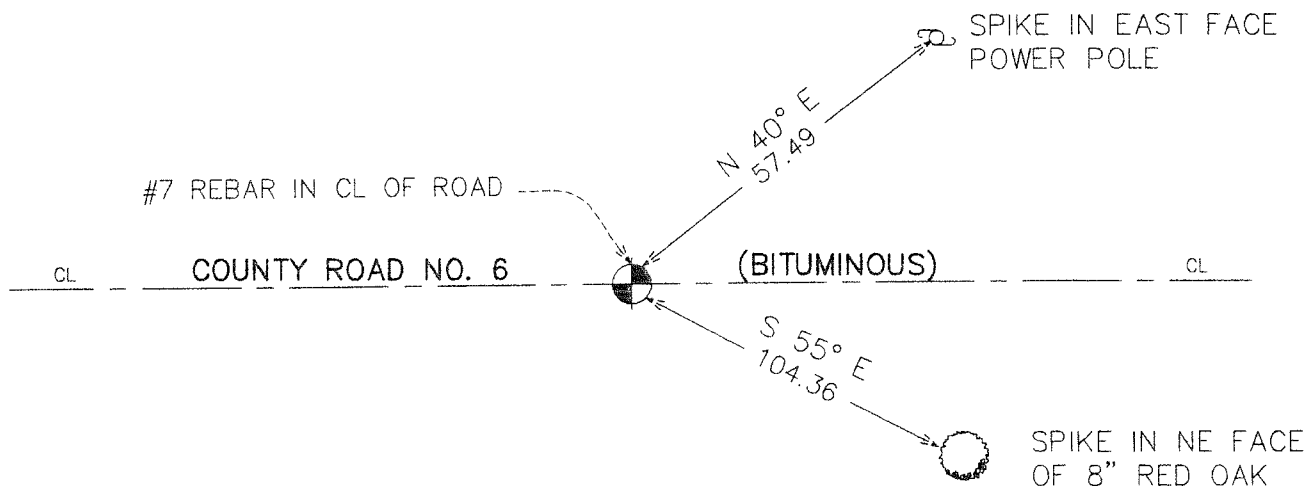
At the corner location shown on the sketch:
On 08/ /2004 Set a Kanabec County Monument.

Kanabec County U.S. Survey Feet Coordinates
NAD 1983, HARN 1996 Adjustment
Obtained by RTK GPS Observation

Northing= 158422.47
Easting= 377843.91

Note: NAD 1983, HARN 1996 Adjustment
coordinates are NOT compatible with
NAD 1983 coordinates
Note: 1 Meter=3937/1200 U.S. Survey Feet

SKETCH OF REFERENCE TIES



Statement of evidence relative to this corner location is on back of page.

I hereby certify that this document and the data contained herein was prepared by me or under my direct supervision.

Ernest L. Rud 10-10-2006
Signature Date

Registration No. Minn No 9808

- Land Surveyor, Professional Engineer
- County Surveyor, County Engineer

OFFICE OF THE COUNTY RECORDER

County of _____

I hereby certify that this document was filed in the County Recorder's office at _____ M. on the _____ day of _____ A.D., 20____

County Recorder _____

BY _____ Deputy

DOCUMENT NO. _____

STATEMENT OF EVIDENCE

From Tie Sheet 682

All of the original government bearing trees are now gone.

There is a survey on file at the County Recorder's Office of Section 1 by Thomas B. Vickery, dated February 1900, which states he set stakes on line in their proper places.

On April 25, 1983, we ran a survey along the north line of Sections 11 and 12 and located the existing monuments and lines of occupation.

On April 26, 1983, we made an excavation with the county backhoe at this corner. The excavation was 30 feet long east-west, and 15 feet wide north-south, centered on the centerline of existing east-west road and tree line south.

No evidence was found in the excavation.

This corner was set by single proportional measurement and a 7/8" by 24" capped rebar was set to mark this corner.

In August 2004, we did a survey around Sections 11, 12, and 13 to locate existing monumentation and tie in lines of occupation. County Road No. 6 had been reconstructed since 1983, so no evidence or ties to the corner set by M.B. Rude remained. We reset the corner from M.B. Rude's survey, set a #7 rebar, took new ties and established Kanabec County coordinates using GPS equipment.