

CERTIFICATE OF LOCATION OF GOVERNMENT CORNER

NORTH QUARTER Corner of Section 8, Township 39, Range 24, 4TH P.M.
STATE OF MINNESOTA, County of KANABEC

At the corner location shown on the sketch:
On 05/29/2003 Found a 4" BY 17" Cast Iron Monument.

Kanabec County U.S. Survey Feet Coordinates
NAD 1983, HARN 1996 Adjustment
Obtained by RTK GPS Observation

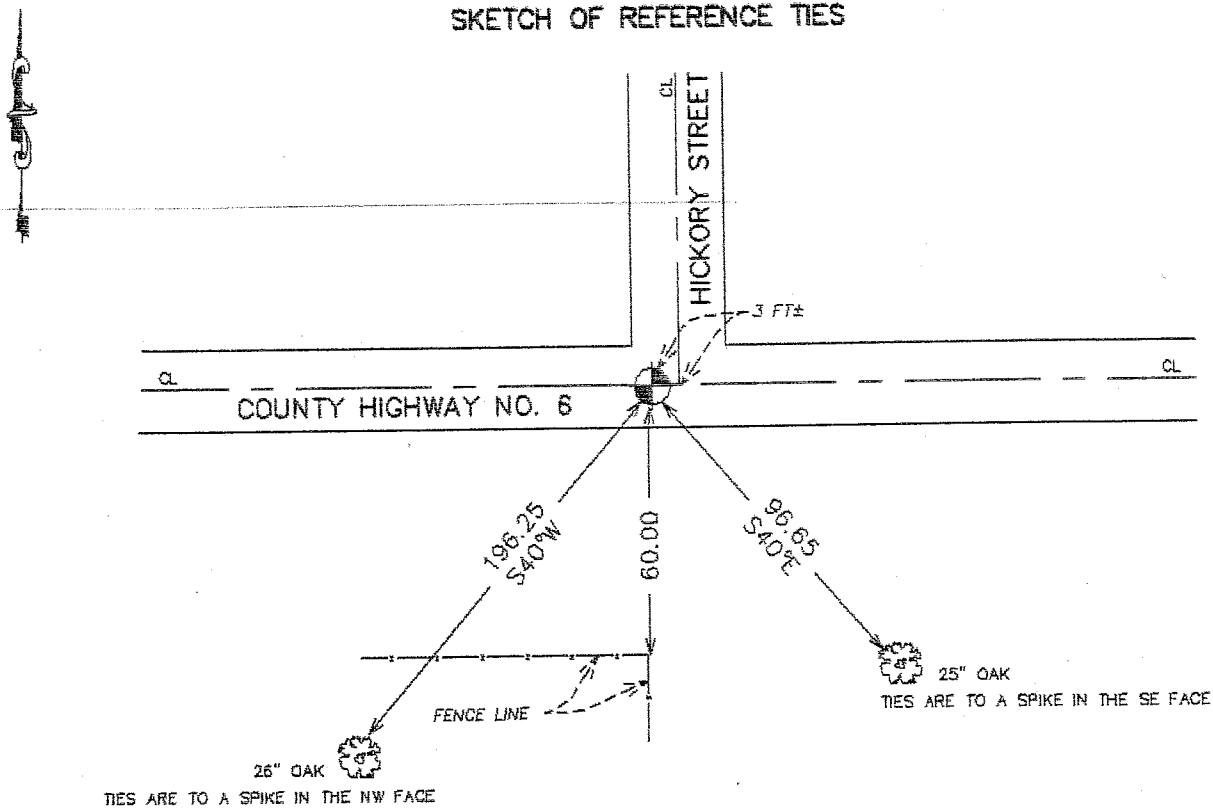
Northing= 158509.025

Easting= 383065.774

Note: NAD 1983, HARN 1996 Adjustment
coordinates are NOT compatible with
NAD 1983 coordinates

Note: 1 Meter=3937/1200 U.S. Survey Feet

SKETCH OF REFERENCE TIES



Statement of evidence relative to this corner location is on back of page.

I hereby certify that this document and the data contained herein was prepared by me or under my direct supervision.

Ereast J. Rud
Signature

7-08-2003
Date

Registration No. 9808

- Land Surveyor, Professional Engineer
 County Surveyor, County Engineer

OFFICE OF THE COUNTY RECORDER

County of _____

I hereby certify that this document was filed in the County Recorder's office at _____ M. on the _____ day of _____ A.D., 20____

County Recorder _____

BY _____ Deputy

DOCUMENT NO. _____

STATEMENT OF EVIDENCE

FROM TIE SHEET NO. 654.

All of the original bearing trees are now gone.

In 1904, John Nelson County Surveyor made a survey for a road along the north line of Sections 7 and 8. His records don't show what was found or set at the north 1/4 corner of Section 8.

In July, 1982, we ran a survey along the north line of Section 8 and found a bolt at the north 1/4 corner which fits the center line of the east-west road and road north and fence line south. The bolt is 5'+/- north 2'+/- east of a spike of the north line of Section 8.

In August, 1982, we made an excavation with the county backhoe 15 feet square, 3 feet deep, 1 foot into natural ground. No additional evidence was found in the excavation.

The location of the bolt was accepted as the best available evidence of the original corner location. This location is in harmony with accepted lines of occupation. A 4" by 17" cast iron monument was set to replace the bolt.

May 2003

Found monument, took new field ties and established Kanabec County coordinates on monument.