

CERTIFICATE OF LOCATION OF GOVERNMENT CORNER

EAST QUARTER Corner of Section 7, Township 39, Range 24, 4TH P.M.

STATE OF MINNESOTA, County of KANABEC

At the corner location shown on the sketch:
 SET 1/2" X 24" PIPE WITH ALUMINUM CAP AT INTERSECTION
 OF FENCES.

Kanabec County U.S. Survey Feet Coordinates
 NAD 1983, HARN 1996 Adjustment
 Obtained by RTK GPS Observation

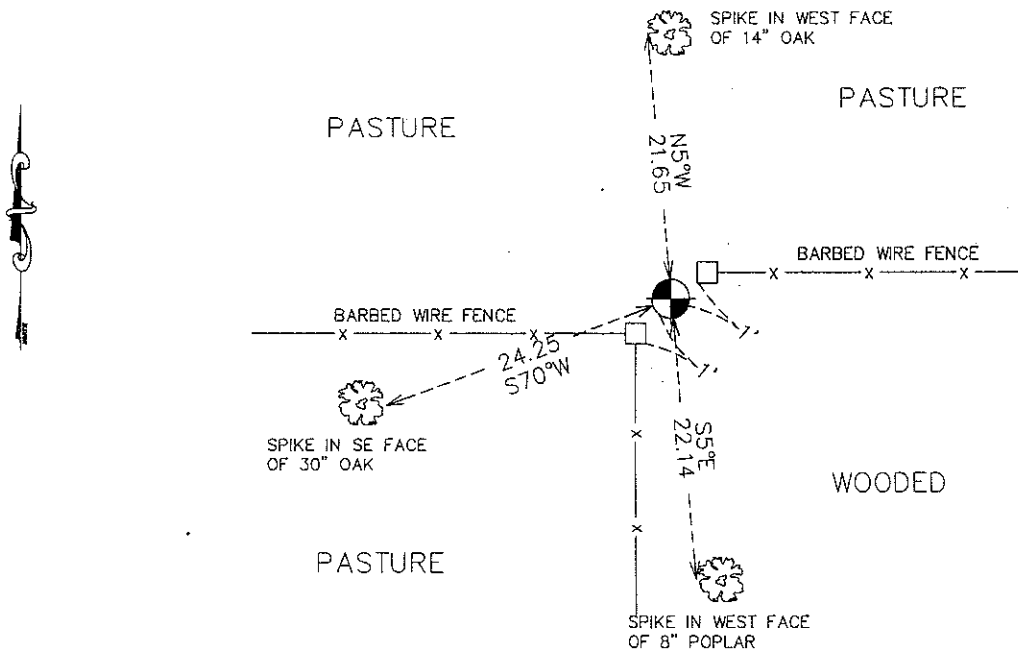
Northing= 155911.44

Easting= 380502.44

Note: NAD 1983, HARN 1996 Adjustment
 coordinates are NOT compatible with
 NAD 1983 coordinates

Note: 1 Meter=3937/1200 U.S. Survey Feet

SKETCH OF REFERENCE TIES



Statement of evidence relative to this corner location is on back of page.

I hereby certify that this document and the data contained herein was prepared by me or under my direct supervision.

Ernest J. Paul
 Signature

12-21-2010
 Date

Registration No. 9808

Land Surveyor, [] Professional Engineer

[] County Surveyor, [] County Engineer

OFFICE OF THE COUNTY RECORDER

County of _____

I hereby certify that this document was filed in the County Recorder's office at _____ M. on the _____ day of _____ A.D., 20____

County Recorder _____

BY _____ Deputy

DOCUMENT NO. _____

E1/4 CORNER, SEC. 7, T39, R24

STATEMENT OF EVIDENCE

THE ORIGINAL CORNER POST WAS SET BY DEPUTY SURVEYOR SILAS BARNARD ON OCT. 5, 1855 AND 2 BEARING TREES ESTABLISHED AS FOLLOWS:

8" BASSWOOD BEARING S22°W @ 40 LINKS

12" BASSWOOD BEARING S80°E @ 100 LINKS

NO VISIBLE EVIDENCE REMAINS TODAY FOR THE CORNER OR BEARING TREES.

NO RECORDS OF SUBSEQUENT SURVEYS COULD BE FOUND AT THE KANABEC COUNTY OFFICES.

NO ROAD OPENINGS ALONG THIS LINE WERE ON FILE AT THE COUNTY AUDITOR'S OFFICE.

ON NOV. 23, 2010 E.G. RUD AND SONS, INC. RAN A SURVEY ALONG THE EAST LINE OF SEC. 7. THIS CORNER FALLS AT THE INTERSECTION OF AN EAST-WEST FENCE AND A FENCE LINE RUNNING SOUTH. THESE FENCES HAVE BEEN IN PLACE FOR SEVERAL YEARS AND THE FENCE INTERSECTION WAS 6 FEET EAST AND 12 FEET NORTH OF A LINE AND SPLIT. A MONUMENT WAS SET AT THE FENCE INTERSECTION, TIES TAKEN AND KANABEC COUNTY COORDINATES WERE ESTABLISHED ON THIS POSITION. WE FELT THE FENCES WERE THE BEST EVIDENCE OF THE PERPETUATION OF THIS CORNER.