

CERTIFICATE OF LOCATION OF GOVERNMENT CORNER

NORTH QUARTER Corner of Section 18, Township 39, Range 24, 4TH P.M.
 STATE OF MINNESOTA, County of KANABEC

At the corner location shown on the sketch:
 SET A 1/2" IRON PIPE WITH CAP MARKED RLS 9808.

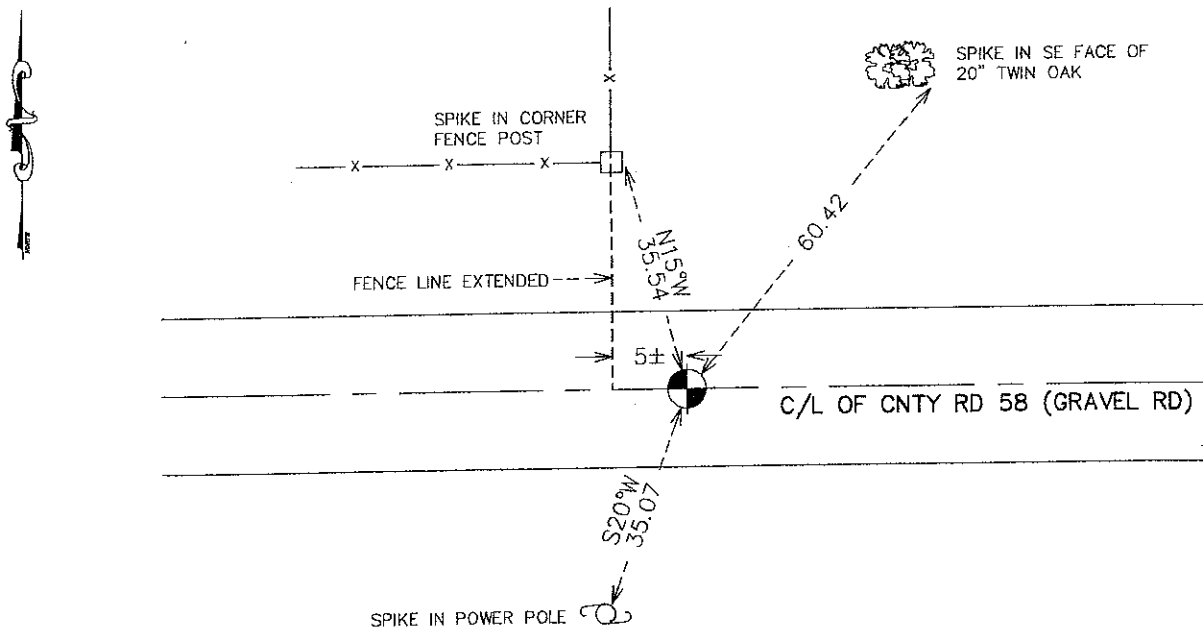
Kanabec County U.S. Survey Feet Coordinates
 NAD 1983, HARN 1996 Adjustment
 Obtained by RTK GPS Observation

Northing= 153289.05
 Easting= 377874.10

Note: NAD 1983, HARN 1996 Adjustment
 coordinates are NOT compatible with
 NAD 1983 coordinates

Note: 1 Meter=3937/1200 U.S. Survey Feet

SKETCH OF REFERENCE TIES



Statement of evidence relative to this corner location is on back of page.

I hereby certify that this document and the data contained herein was prepared by me or under my direct supervision.

Ernest Paul
 Signature

12-23-10
 Date

Registration No. 9808

- Land Surveyor, Professional Engineer
 County Surveyor, County Engineer

OFFICE OF THE COUNTY RECORDER

County of _____

I hereby certify that this document was filed in the County Recorder's office at _____ M. on the _____ day of _____ A.D., 20 _____

County Recorder _____

BY _____ Deputy

DOCUMENT NO. _____

N1/4 CORNER, SEC. 18, T39, R24

STATEMENT OF EVIDENCE

THE ORIGINAL CORNER WAS SET ON OCT. 5, 1855 BY DEPUTY SURVEYOR ISAAC BANKER AND 2 BEARING TREES NOTED AS:

20" PINE @ 10 LINKS BEARING SOUTH

18" PINE @ 12 LINKS BEARING NORTH

NO VISIBLE EVIDENCE REMAINS TODAY FOR THE CORNER OR THE BEARING TREES.

ON JULY 18, 1902 A ROAD OPENING WAS FILED IN THE COUNTY AUDITOR'S OFFICE WHICH STATES THAT 77 CHAINS WAS MEASURED ALONG THE NORTH LINE OF SEC. 18.

ON JUNE 20, 1902 JOHN NELSON RECORDED A SURVEY ALON THE NORTH LINE OF SEC. 18 AND STATED THAT HE HAD SET A SANDSTONE AT ALL SEC. CORNERS AND 1/4 CORNERS. RECORDED ON PAGE 16 IN BOOK 1 OF 2 BOOKS OF SURVEYS.

IN DEC. 2010, E.G. RUD AND SONS, INC. RAN A SURVEY AROUND SEC. 7 AND 18 TO LOCATE MONUMENTATION, LINES OF OCCUPATION AND DETERMINE SEARCH AREAS. THIS CORNER FALLS IN THE CENTERLINE OF AND EAST-WEST AND A FENCE LINE NORTH. AN IRON PIPE WAS SET AT A PRORATED DISTANCE FROM THE NW CORNER TO THE NE CORNER OF SEC. 18. THIS POINT TURNED OUT TO BE 5± FEET EAST OF THE OLD FENCE LINE RUNNING NORTH. TIES WERE TAKEN AND AN EXCAVATION WILL BE DONE IN THE SUMMER OF 2011.