

CERTIFICATE OF LOCATION OF GOVERNMENT CORNER

EAST
NORTHWEST

Corner of Section 18, Township 39, Range 24, 4TH P.M.

STATE OF MINNESOTA, County of KANABEC

At the corner location shown on the sketch:
On 07/ /2003 Found a Kanabec County Monument.

Kanabec County U.S. Survey Feet Coordinates
NAD 1983, HARN 1996 Adjustment
Obtained by RTK GPS Observation

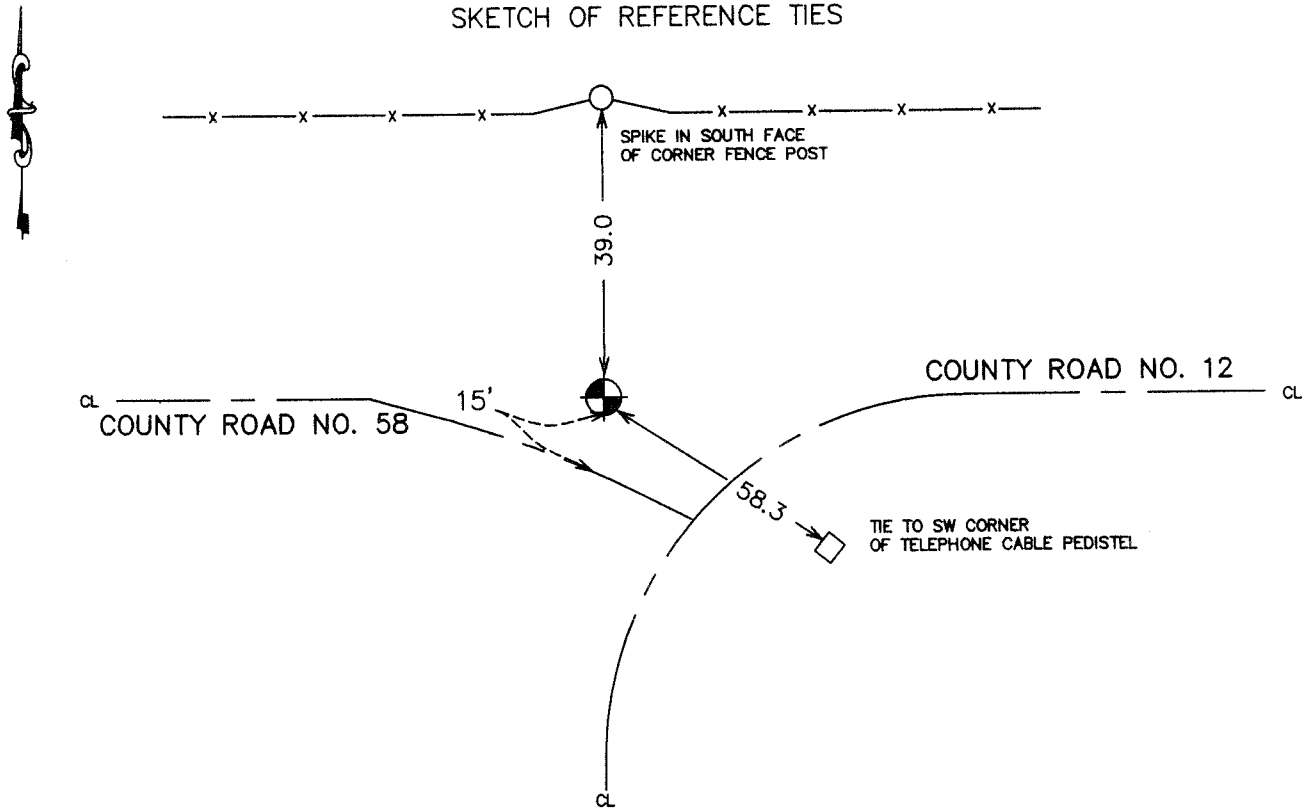
Northing= 153270.486

Easting= 380528.904

Note: NAD 1983, HARN 1996 Adjustment
coordinates are NOT compatible with
NAD 1983 coordinates

Note: 1 Meter=3937/1200 U.S. Survey Feet

SKETCH OF REFERENCE TIES



Statement of evidence relative to this corner location is on back of page.

I hereby certify that this document and the data contained herein was prepared by me or under my direct supervision.

Ernest J. Hub
Signature

8-03-2004
Date

Registration No. 9808

Land Surveyor, Professional Engineer

County Surveyor, County Engineer

OFFICE OF THE COUNTY RECORDER

County of _____

I hereby certify that this document was filed in the County Recorder's office at _____ M. on the

_____ day of _____ A.D., 20__

County Recorder _____

BY _____ Deputy

DOCUMENT NO. _____

STATEMENT OF EVIDENCE

From tie sheet 521

In 1855, Silas Bernard made the original US Government Survey and set a wood post or stake for the corner and tied it out with 4 good ties, which are now gone.

In 1904, John Nelson set a sandstone marked with an "x" for the corner. We found no ties to this stone. In 1904, he again found the said stone, but still made no ties to it

In August 1975, we went out and dug a large hole and found 2 large sandstones, but neither of which were marked with an "x".

On September 14, 1978, we made a survey along the north and west lines of Section 17 and found the County Highway P.I. Spike. This P.I. fits the lines of occupation very well. Using the PI location, the fence lines at the 1/16 corner 1/4 mile to the south also fit well.

We accepted this P.I. location as the best available evidence of the original corner, as this location has been accepted as the corner by area residents. Mr. Lyle Miller, a resident of the area for 50 years, said he remembers seeing a sandstone monument at this location. We replaced the PI spike with a 2 3/4" by 19" cast iron monument.

We replaced the spike with a 2 3/4" by 19" cast iron monument. This corner is 0.41 feet south and 3.18 feet west of a line and split between the northwest and southwest corners of Section 17.

(2003)

In July 2003, we found the cast iron monument set by M.B. Rude. We established Kanabec County coordinates on the monument using GPS equipment.