

CERTIFICATE OF LOCATION OF GOVERNMENT CORNER

WEST QUARTER Corner of Section 17, Township 39, Range 24, 4TH P.M.

STATE OF MINNESOTA, County of KANABEC

At the corner location shown on the sketch:
On 07/ /2003 Set a Kanabec County Monument.

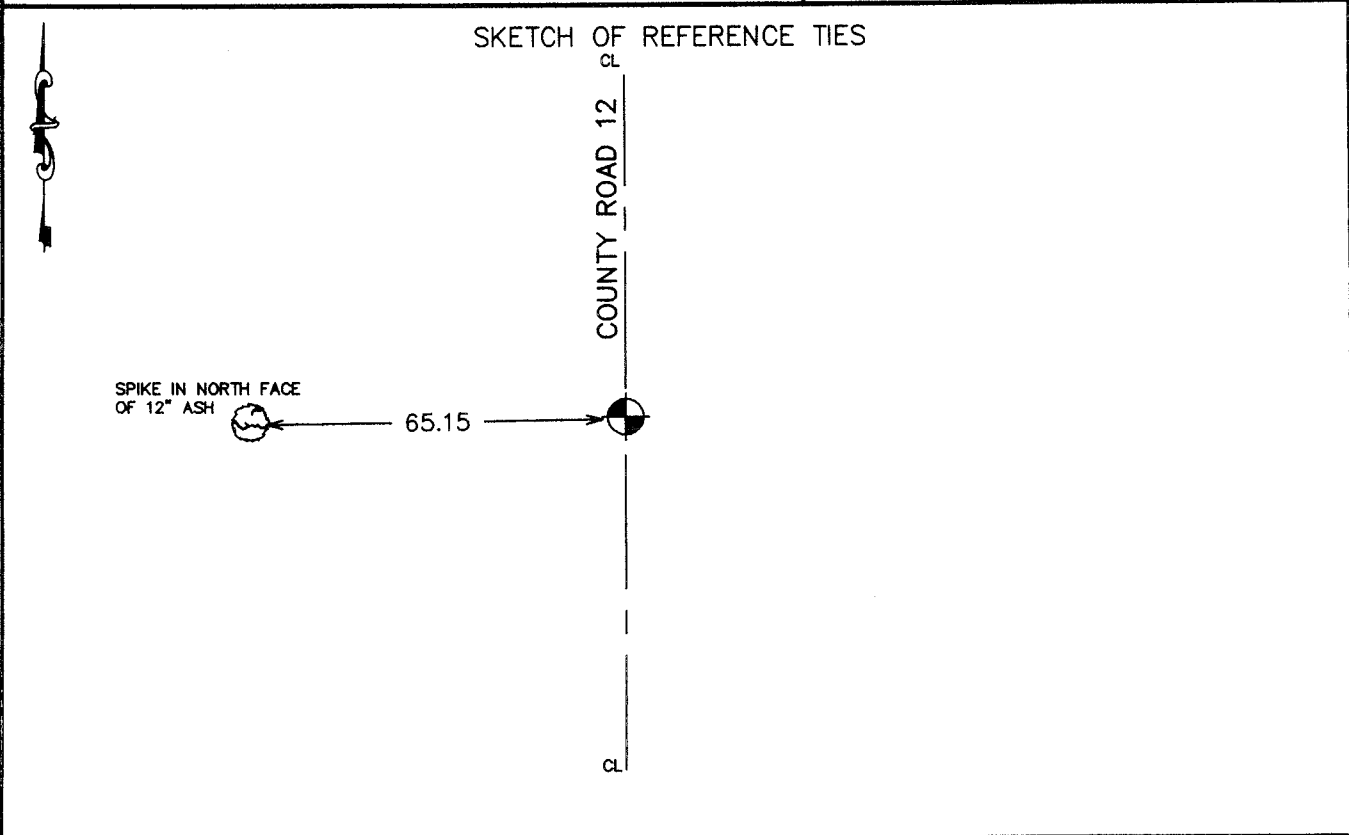
Kanabec County U.S. Survey Feet Coordinates
NAD 1983, HARN 1996 Adjustment
Obtained by RTK GPS Observation

Northing= 150625.775

Easting= 380512.329

Note: NAD 1983, HARN 1996 Adjustment
coordinates are NOT compatible with
NAD 1983 coordinates

Note: 1 Meter=3937/1200 U.S. Survey Feet



Statement of evidence relative to this corner location is on back of page.

I hereby certify that this document and the data contained herein was prepared by me or under my direct supervision.

Ernest J. [Signature]
Signature

8-03-2004
Date

Registration No. 9808

Land Surveyor, [] Professional Engineer

[] County Surveyor, [] County Engineer

OFFICE OF THE COUNTY RECORDER

County of _____

I hereby certify that this document was filed in the County Recorder's office at _____ M. on the _____ day of _____ A.D., 20____

County Recorder _____

BY _____ Deputy

DOCUMENT NO. _____

STATEMENT OF EVIDENCE

From tie sheet 520

In 1855, Silas Bernard made the original US Government Survey and set a wood post or stake for the corner and tied it out with 2 good ties, which are now gone.

In 1904, John Nelson set a sandstone marked with an "x" for the corner and we find no ties on record pertaining to the sandstone set.

In August 1976, we went out and dug a large hole with a backhoe, but we were unable to find any sandstones or stakes for the corner.

In September 1978, we made a survey along the west line of section 17 and found the County Highway P.I. Spike. This P.I. fits the center line of the north-south road and evidence of the fence lines east and west. Using this location, the fence lines 1/4 mile to the north fit well.

We accepted this P.I. location as the best available evidence of the original corner.

We replaced the spike with a 2 3/4" by 19" cast iron monument. This corner is 0.41 feet south and 3.18 feet west of a line and split between the northwest and southwest corners of Section 17.

(2003)

In July 2003, we did a survey along the west lines of Sections 17, 20, and 29. This monument along with all ties were gone. We reconstructed M.B. Rude's survey for the Kanabec County Highway Department in 1978. We set a #7 rebar with an aluminum cap. We took new ties and established Kanabec County coordinates using GPS equipment.