

# CERTIFICATE OF LOCATION OF GOVERNMENT CORNER

NORTH QUARTER Corner of Section 19, Township 39, Range 24, 4TH P.M.  
 STATE OF MINNESOTA, County of KANABEC

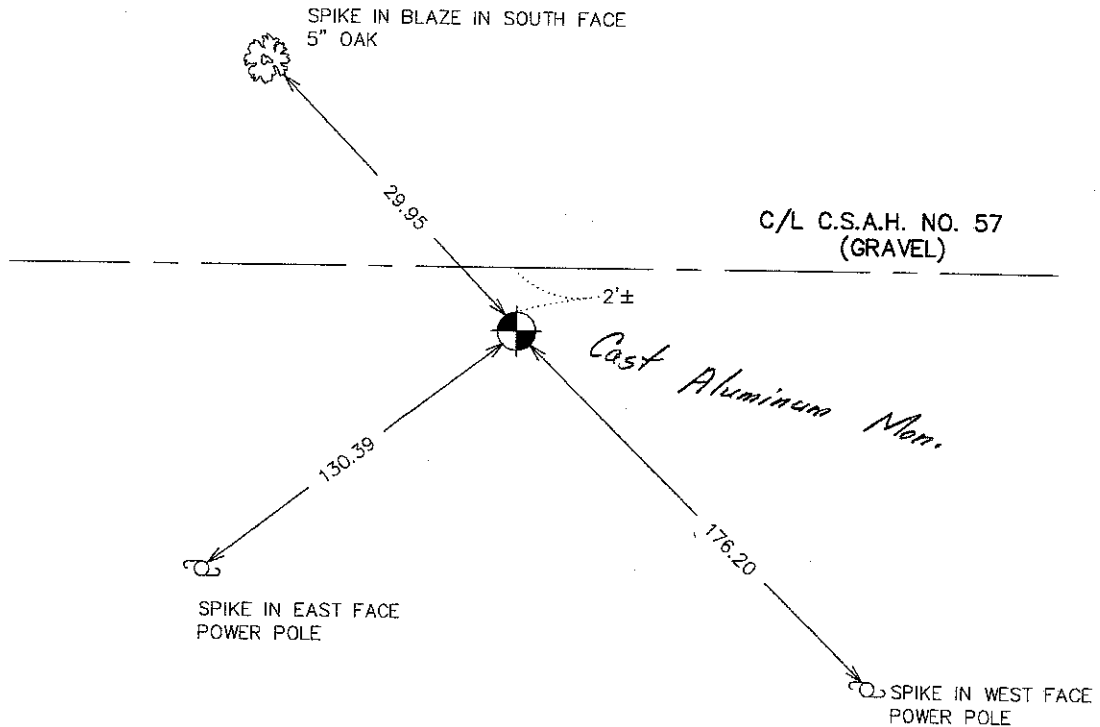
At the corner location shown on the sketch:  
 FOUND THIS MONUMENT  
 AND ESTABLISHED KANABEC COUNTY COORDINATES ON ITS LOCATION.

Kanabec County U.S. Survey Feet Coordinates  
 NAD 1983, HARN 1996 Adjustment  
 Obtained by RTK GPS Observation

Northing= 147980.78  
 Easting= 377885.765

Note: NAD 1983, HARN 1996 Adjustment  
 coordinates are NOT compatible with  
 NAD 1983 coordinates  
 Note: 1 Meter=3937/1200 U.S. Survey Feet

## SKETCH OF REFERENCE TIES



Statement of evidence relative to this corner location is on back of page.

I hereby certify that this document and the data  
 contained herein was prepared by me or under  
 my direct supervision.

Ernest J. Rud 8-20-2007  
 Signature Date

Registration No. Minn No 9808

Land Surveyor,  Professional Engineer  
 County Surveyor,  County Engineer

### OFFICE OF THE COUNTY RECORDER

County of \_\_\_\_\_

I hereby certify that this document was filed in  
 the County Recorder's office at \_\_\_\_\_ M. on the  
 \_\_\_\_\_ day of \_\_\_\_\_ A.D., 20\_\_\_\_

County Recorder \_\_\_\_\_

BY \_\_\_\_\_ Deputy

DOCUMENT NO. \_\_\_\_\_

## NORTH QUARTER CORNER SECTION 19, T39, R24

### **STATEMENT OF EVIDENCE**

M.B. RUDE MADE AN EXCAVATION WITH THE BACKHOE 40 FEET EAST AND WEST, 15 FEET NORTH AND SOUTH, 3 FEET DEEP AT FENCE LINE NORTH EXTENDED SOUTH TO THE CENTER LINE OF THE ROAD. HE ALSO DUG A 10' BY 10' BY 3' HOLE AT PROPORTIONAL DISTANCE BETWEEN THE NORTHEAST AND NORTHWEST CORNERS OF SECTION 19. NO EVIDENCE WAS FOUND IN EITHER EXCAVATION.

MR. GLEN BLACK, THE LAND OWNER TO THE NORTHWEST OF CORNER, HAS LIVED THERE FROM 1940 AND SAID THAT THE PREVIOUS LAND OWNER, MR. LYLE MILLER, TOLD HIM THAT WHEN THEY SURVEYED FOR THE TOWNSHIP ROAD THEY FOUND THE QUARTER POST AND MR. MILLER BUILT THE FENCE LINE IN HARMONY WITH THE QUARTER POST THAT WAS FOUND.

M.B. RUDE SET THE QUARTER CORNER ON LINE BETWEEN THE NORTHEAST AND THE NORTHWEST CORNERS ON THE SOUTHERLY EXTENSION OF THE FENCE LINE NORTH PER MR. BLACK'S TESTIMONY. THIS CORNER IS 33.82 FEET EAST OF THE PROPORTIONAL LOCATION.

IN 2003 E.G. RUD AND SONS FOUND THIS MONUMENT AND ESTABLISHED KANABEC COUNTY COORDINATES ON THIS POSITION USING G.P.S. EQUIPMENT.