

CERTIFICATE OF LOCATION OF GOVERNMENT CORNER

NORTH QUARTER Corner of Section 20, Township 39, Range 24, 4TH P.M.

STATE OF MINNESOTA, County of KANABEC

At the corner location shown on the sketch:
ON 5-25-2010 FOUND 7/8" REBAR WITH ALUMINUM CAP

Kanabec County U.S. Survey Feet Coordinates
NAD 1983, HARN 1996 Adjustment
Obtained by RTK GPS Observation

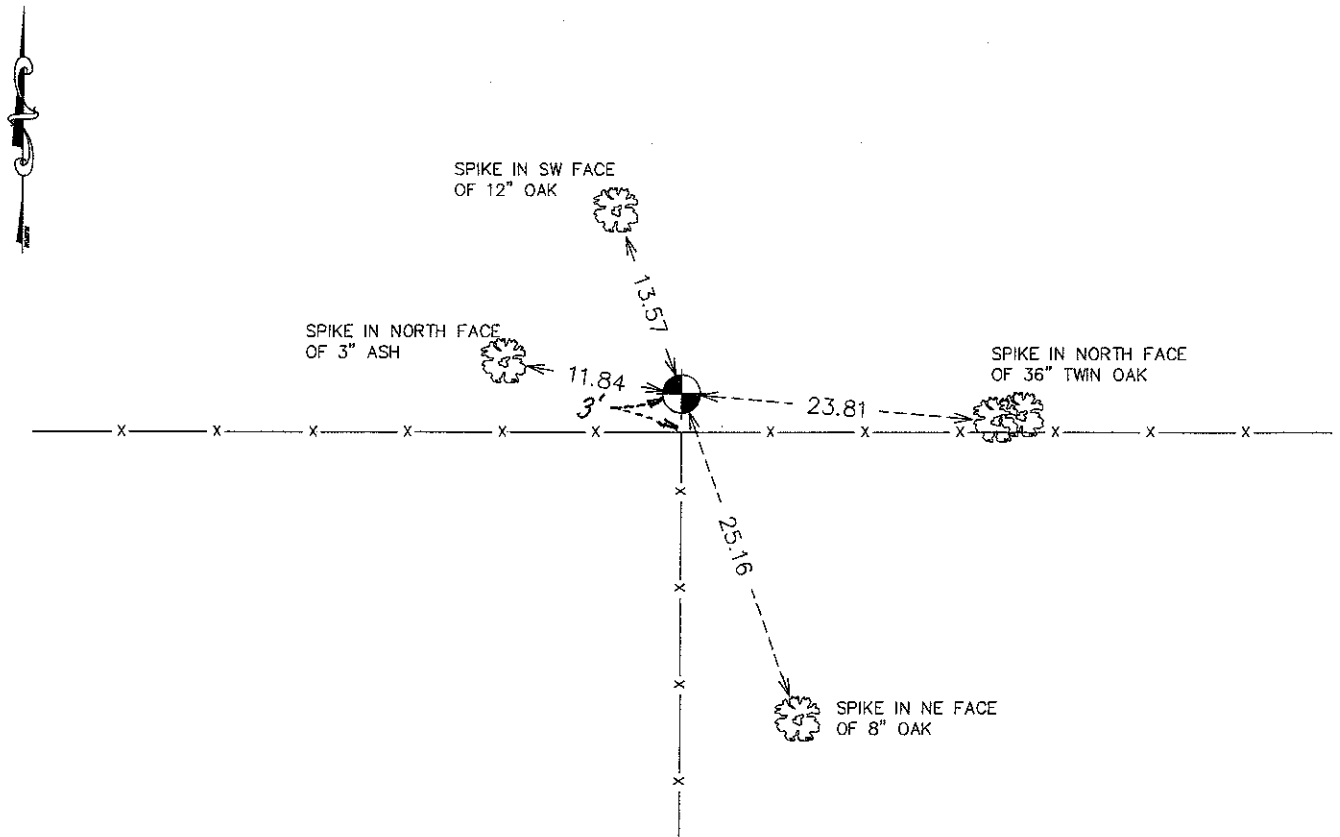
Northing= 147981.50

Easting= 383097.05

Note: NAD 1983, HARN 1996 Adjustment
coordinates are NOT compatible with
NAD 1983 coordinates

Note: 1 Meter=3937/1200 U.S. Survey Feet

SKETCH OF REFERENCE TIES



Statement of evidence relative to this corner location is on back of page.

I hereby certify that this document and the data contained herein was prepared by me or under my direct supervision.

Ernest Paul
Signature

11-27-10
Date

Registration No. 9808

Land Surveyor, Professional Engineer
 County Surveyor, County Engineer

OFFICE OF THE COUNTY RECORDER

County of _____

I hereby certify that this document was filed in the County Recorder's office at _____ M. on the _____ day of _____ A.D., 20____

County Recorder _____

BY _____ Deputy

DOCUMENT NO. _____

N1/4 CORNER, SEC. 20, T39, R24

STATEMENT OF EVIDENCE

ALL OF THE ORIGINAL BEARING TREES TO THIS POSITION ARE NOW GONE.

IN MAY OF 1893, MR. JOHN NELSON, KANABEC COUNTY SURVEYOR FOUND AN ORIGINAL BEARING TREE TO THIS POSITION. HE SET A NEW POST AND MADE NEW BEARING TREES TO THE POSITION THAT HE ESTABLISHED USING THE ORIGINAL BEARING TREE. ALL OF JOHN NELSON'S BEARING TREES ARE NOW GONE.

IN APRIL OF 1990, IN A RESURVEY OF SEC. 20, DALE ANDERSON ESTABLISHED A POSITION AT WHAT HE ASSUMED TO BE THE N1/4 CORNER OF SEC. 20. THIS POSITION IS AT THE INTERSECTION OF THE EASTERLY PROJECTION OF THE FENCE LINE TO THE WEST OF THE CORNER LOCATION AND AT THE NORTHERLY PROJECTION OF THE FENCE LINE TO THE SOUTH. THE FENCE LINE TO THE EAST IS DOWN AND IN POOR CONDITION. HE WAS UNABLE TO ESTABLISH A LINE FROM IT. THE POSITION THAT HE SET IS ABOUT 3 FEET NORTH OF THE EXISTING FENCE CORNER. AFTER REVIEW OF HIS DATA WITH KANABEC COUNTY SURVEYOR, MORRELL B. RUDE, ANDERSON ACCEPTED HIS ASSUMED POSITION AS THE LOCATION FOR THE N1/4 CORNER OF SEC.20. HE MEASURED 2582.18 FEET (VS 2585.88 NELSON'S 1893 SURVEY) TO THE NE CORNER OF SEC. 20 AND 2595.00 FEET (VS 2597.76 NELSON'S 1893 SURVEY) TO THE NW CORNER OF SEC. 20. HE HAD A 1°04'22" DEFLECTION IN HIS LINE AT THE N1/4 CORNER, NELSON HAD A 1°58' DEFLECTION.

ON MAY3, 1990, DALE ANDERSON SET A 7/8" BY 36" CAPPED REBAR TO MARK THIS POSITION.

ON MAY 25, 2010, E.G. RUD AND SONS, INC. FOUND THIS MONUMENT. KANABEC COUNTY COORDINATES WERE ESTABLISHED ON THIS POSITION.