

CERTIFICATE OF LOCATION OF GOVERNMENT CORNER

SOUTHWEST Corner of Section 17, Township 39, Range 24, 4TH P.M.

STATE OF MINNESOTA, County of KANABEC

At the corner location shown on the sketch:
On 07/ /2003 Set a Kanabec County Monument.

Kanabec County U.S. Survey Feet Coordinates
NAD 1983, HARN 1996 Adjustment
Obtained by RTK GPS Observation

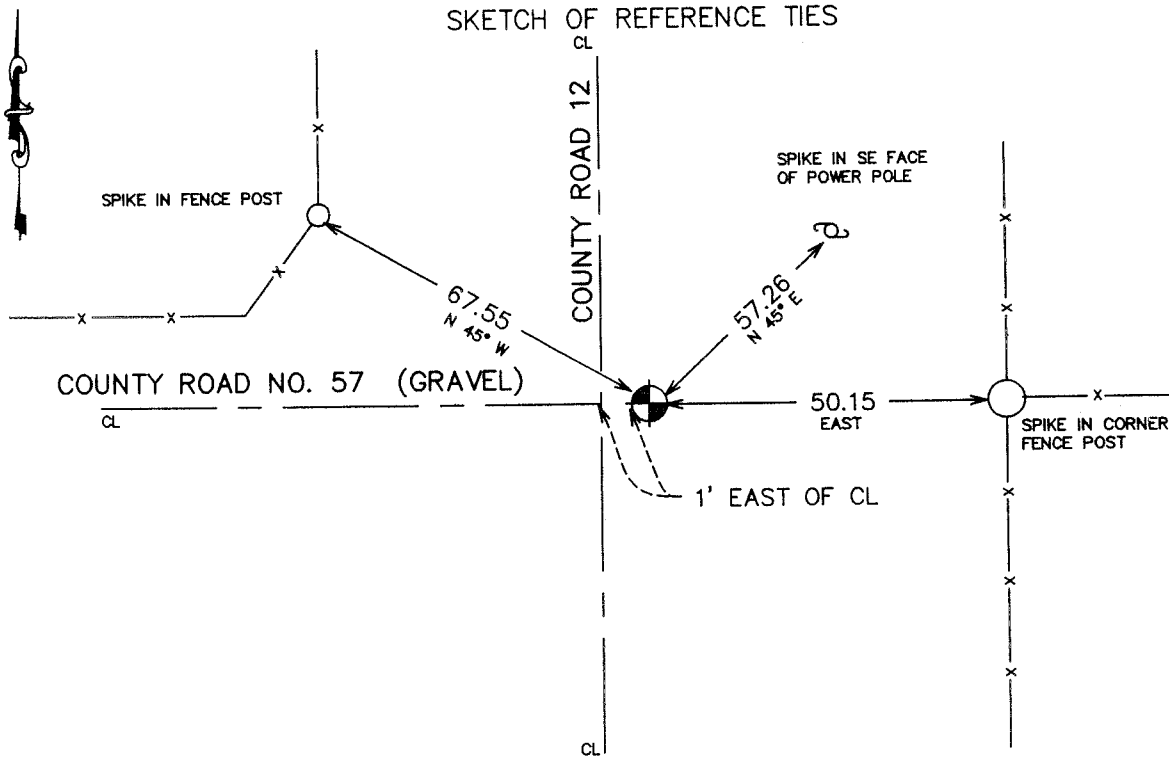
Northing= 147982.035

Easting= 380502.101

Note: NAD 1983, HARN 1996 Adjustment
coordinates are NOT compatible with
NAD 1983 coordinates

Note: 1 Meter=3937/1200 U.S. Survey Feet

SKETCH OF REFERENCE TIES



Statement of evidence relative to this corner location is on back of page.

I hereby certify that this document and the data contained herein was prepared by me or under my direct supervision.

Ernest Wood
Signature

8-04-2004
Date

Registration No. 9808

Land Surveyor, [] Professional Engineer

[] County Surveyor, [] County Engineer

OFFICE OF THE COUNTY RECORDER

County of _____

I hereby certify that this document was filed in the County Recorder's office at _____ M. on the _____ day of _____ A.D., 20____

County Recorder _____

BY _____ Deputy

DOCUMENT NO. _____

STATEMENT OF EVIDENCE

From tie sheet 363

Set monument from granite stone found in excavation which was set in 1937 by Frank Turnicliiff, County Surveyor.

It fit close to the center line of the road and fence lines to the east-west.

(2003)

In July 2003, we did a survey along the west lines of Sections 17, 20, and 29. This monument, along with all ties were gone. We reconstructed the survey done by M.B. Rude in 1978 for the Kanabec County Highway Department, and set a #7 rebar with an aluminum cap. We took new ties and established Kanabec County coordinates using GPS equipment.