

CERTIFICATE OF LOCATION OF GOVERNMENT CORNER

NORTH QUARTER Corner of Section 30, Township 39, Range 24, 4TH P.M.

STATE OF MINNESOTA, County of KANABEC

At the corner location shown on the sketch:
SET KANABEC COUNTY MONUMENT

Kanabec County U.S. Survey Feet Coordinates
NAD 1983, HARN 1996 Adjustment
Obtained by RTK GPS Observation

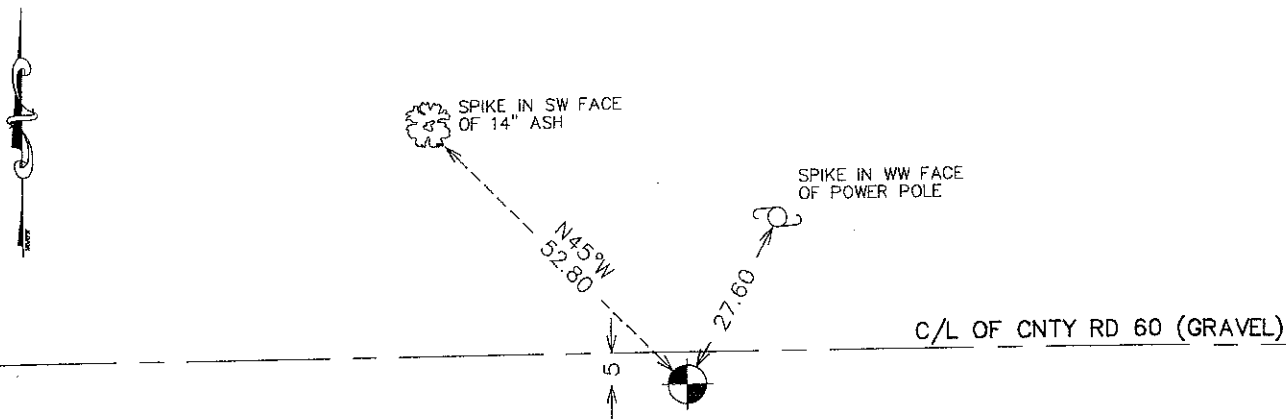
Northing= 142697.18

Easting= 377819.39

Note: NAD 1983, HARN 1996 Adjustment
coordinates are NOT compatible with
NAD 1983 coordinates

Note: 1 Meter=3937/1200 U.S. Survey Feet

SKETCH OF REFERENCE TIES



Statement of evidence relative to this corner location is on back of page.

I hereby certify that this document and the data contained herein was prepared by me or under my direct supervision.

[Signature] 12-23-10
Signature Date

Registration No. 9808

Land Surveyor, Professional Engineer
 County Surveyor, County Engineer

OFFICE OF THE COUNTY RECORDER

County of _____

I hereby certify that this document was filed in the County Recorder's office at _____ M. on the _____ day of _____ A.D., 20____

County Recorder _____

BY _____ Deputy

DOCUMENT NO. _____

N1/4 CORNER, SEC. 30, T39, R24

STATEMENT OF EVIDENCE

THE ORIGINAL CORNER WAS SET BY DEPUTY SURVEYOR SILAS BARNARD ON OCT. 5, 1855 AND 2 BEARING TREES ESTABLISHED. DISTANCE ON THE GLO PLAT IS 77.25 CHAINS.

IN 1893, JOHN NELSON SURVEYED THE NORTH LINE OF SEC. 30 AND MEASURED 78.45 CHAINS (5177.7 FEET), 40.8 ON THE E1/2 AND 37.65 ON THE W1/2.

IN 1910 JOHN NELSON SURVEYED THE NORTH LINE OF SEC. 30 AND RECORDED A DISTANCE OF 77.25 CHAINS OR 5165.5 FEET.

ON JULY 18, 2003 E.G. RUD AND SONS, INC. MEASURED THE DISTANCE ALONG THE NORTH LINE OF SEC. 30 AS 5165.46 FEET. THERE IS A TREE LINE AND FENCE RUNNING NORTH AND A SMALL DITCH AND TREE ROW RUNNING SOUTH. THE NORTH OCCUPATION LINE IS 30± EAST OF THE SOUTH OCCUPATION LINE. A SPIKE WAS SET AT THE INTERSECTION OF THE NORTH OCCUPATION LINE AND THE CENTERLINE OF THE ROAD. THE DISTANCE TO THE NE CORNER OF SEC. 30 MEASURED 2644.09 FEET OR 30 FEET SHORT OF NELSON'S MEASUREMENT AND GLO DISTANCES. A 1/2" PIPE WAS FOUND AT THE SOUTH OCCUPATION LINE.

ON JUNE 25, 2008 AN EXCAVATION, 12' N-S AND 30' E-W, WAS MADE ON THE CENTERLINE OF THE ROAD AND THE SOUTH OCCUPATION LINE AND AT THE PROPORTIONATE DISTANCE BETWEEN THE NE AND NW CORNERS OF SEC. 30. NO EXCAVATION WAS MADE AT THE NORTH OCCUPATION LINE AS THE WEST 2 RODS OF THE SE1/4 HAD BEEN DEEDED TO THE SW1/4. THE 1/2" IRON PIPE WAS ON LINE AND AT PROPORTIONATE DISTANCE BETWEEN THE NE AND NW CORNERS OF SEC. 30. A 12" TRIANGULAR FLAT QUARTZ ROCK WAS FOUND 2 FEET NORTH AND 2 FEET WEST OF THE 1/2" IRON PIPE. THERE WERE NO MARKINGS ON THE ROCK. A MONUMENT WAS SET AT THE PROPORTIONATE DISTANCE AND ON LINE BETWEEN THE NE AND NW CORNERS OF SEC. 30. TIES WERE TAKEN AND KANABEC COUNTY COORDINATES WERE ESTABLISHED ON THIS POSITION.