

CERTIFICATE OF LOCATION OF GOVERNMENT CORNER

NORTH QUARTER Corner of Section 29, Township 39, Range 24, 4TH P.M.

STATE OF MINNESOTA, County of KANABEC

At the corner location shown on the sketch:
On 07/ /2003 Found a Kanabec County Monument.

Kanabec County U.S. Survey Feet Coordinates
NAD 1983, HARN 1996 Adjustment
Obtained by RTK GPS Observation

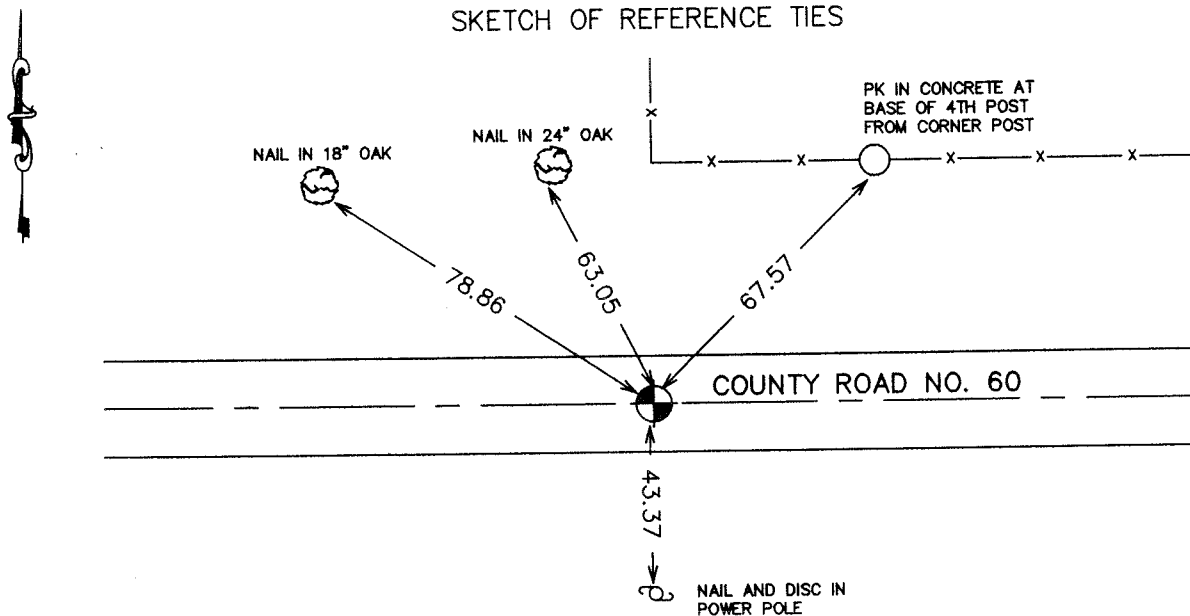
Northing= 142696.033

Easting= 383130.058

Note: NAD 1983, HARN 1996 Adjustment
coordinates are NOT compatible with
NAD 1983 coordinates

Note: 1 Meter=3937/1200 U.S. Survey Feet

SKETCH OF REFERENCE TIES



Statement of evidence relative to this corner location is on back of page.

I hereby certify that this document and the data contained herein was prepared by me or under my direct supervision.

Ernest J. Reed
Signature

8-03-2004
Date

Registration No. 9808

Land Surveyor, Professional Engineer

County Surveyor, County Engineer

OFFICE OF THE COUNTY RECORDER

County of _____

I hereby certify that this document was filed in the County Recorder's office at _____ M. on the _____ day of _____ A.D., 20____

County Recorder _____

BY _____ Deputy

DOCUMENT NO. _____

STATEMENT OF EVIDENCE

From tie sheet 833

All of the original bearing trees to this position are now gone.

In May of 1893, Mr. John Nelson, Kanabec County Surveyor, in a survey of said Section 20, reset the position for the South Quarter corner of Section 20. Notes indicate he could not find any evidence to the original corner at that time. He also did not indicate what he set to mark his corner location other than bearing trees. All of the bearing trees that Nelson made are gone at this time.

On April 25, 1990, the Kanabec County Highway Department, at our request made an excavation at the assumed position for the South Quarter corner of Section 20. We found an old wood post (at original ground level) with three rocks around what appeared to be the base. The post was bent over due to road construction in the area. This position is about 3 feet south of the center line of the existing gravel road and fits the lines of occupation to the north and south at the corner location. After reviewing the evidence with Kanabec County Surveyor Morrell B. Rude, I accepted this position to be the S1/4 corner of Section 20. We measured 2635.47 feet to the SE corner of Section 20 and 2636.05 to the SW corner of Section 20. The corner is about 9 feet north of a straight line between the SE and SW Section corners. Nelson had it on a straight line with 2640 to both section corners.

On May 3, 1990, we set a 7/8" by 36" capped rebar to mark our position.

From tie sheet 833A

All reference ties were intact.

The roadway was regraded in 1992. We located the quarter corner prior to construction and placed additional references outside of the new construction limits. Before the roadway was paved in 1993, the corner was reestablished according to references obtained previously.

(2003)

In July 2003, we did a survey around Section 29. We verified ties and set a #7 rebar with an aluminum cap. We established Kanabec County coordinates using GPS equipment.