

CERTIFICATE OF LOCATION OF GOVERNMENT CORNER

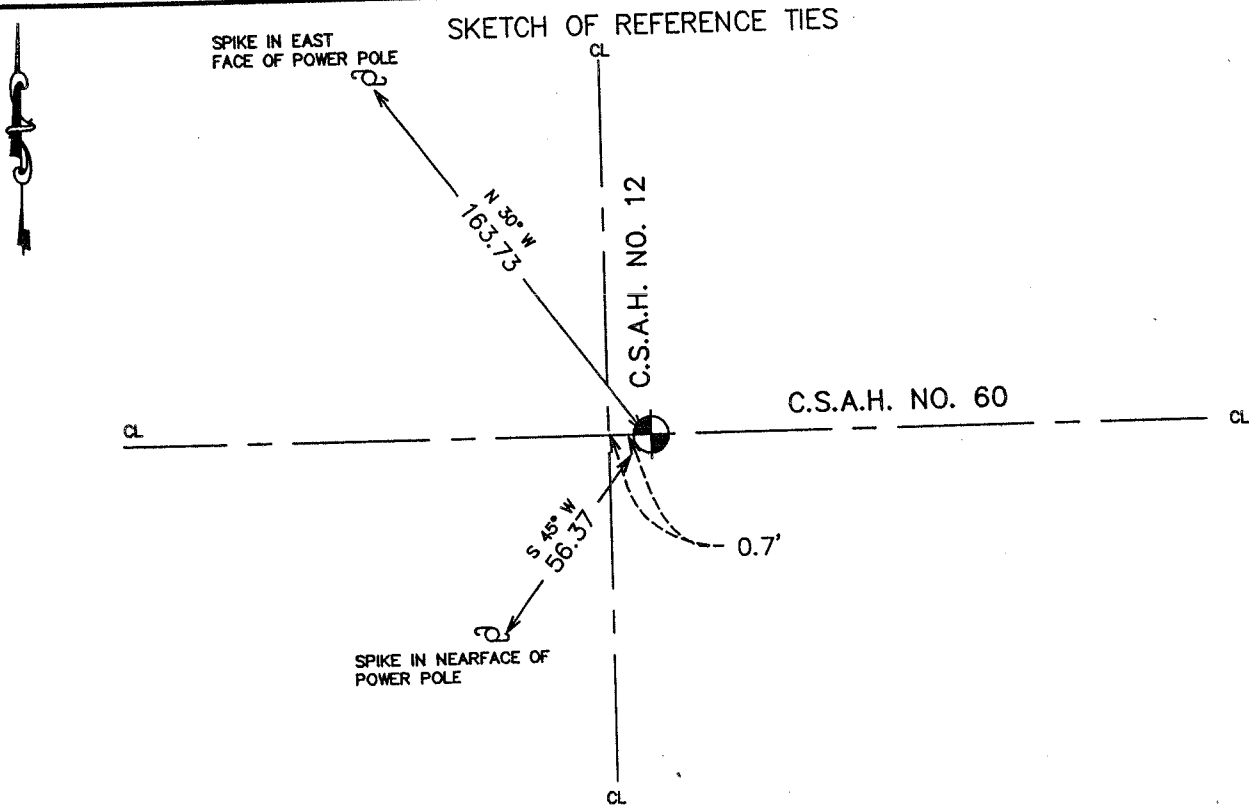
NORTHEAST Corner of Section 30, Township 39, Range 24, 4TH P.M.
 STATE OF MINNESOTA, County of KANABEC

At the corner location shown on the sketch:
 On 07/ /2003 Set a Kanabec County Monument.

Kanabec County U.S. Survey Feet Coordinates
 NAD 1983, HARN 1996 Adjustment
 Obtained by RTK GPS Observation

Northing= 142703.301
 Easting= 380494.219

Note: NAD 1983, HARN 1996 Adjustment
 coordinates are NOT compatible with
 NAD 1983 coordinates
 Note: 1 Meter=3937/1200 U.S. Survey Feet



Statement of evidence relative to this corner location is on back of page.

I hereby certify that this document and the data contained herein was prepared by me or under my direct supervision.

Ernest J. Reed
Signature

7-17-2004
Date

Registration No. 9808

- Land Surveyor, [] Professional Engineer
 [] County Surveyor, [] County Engineer

OFFICE OF THE COUNTY RECORDER

County of _____
 I hereby certify that this document was filed in the County Recorder's office at _____ M. on the _____ day of _____ A.D., 20____

County Recorder _____
 BY _____ Deputy

DOCUMENT NO. _____

STATEMENT OF EVIDENCE

from tiesheet 525

All of the original bearing trees are now gone. County Surveyor, John Nelson, set a new post in 1893.

We made an excavation with a county backhoe at the intersection of roads. At two feet below the surface, we found a 16" by 16" by 4" sandstone monument marked with a "+". We replaced the sandstone monument with a cast iron monument as the sandstone was broken in the excavation.

(2003)

In July of 2003, we did a survey around Section 29, and along the west line of Sections 17, 20 and 29. We reconstructed the survey done by M.B. Rude in 1978 and reset a #7 rebar with an aluminum cap. This fit the one remaining tie to a power pole. We established Kanabec County coordinates on this monument using G.P.S. equipment.