

CERTIFICATE OF LOCATION OF GOVERNMENT CORNER

WEST QUARTER Corner of Section 29, Township 39, Range 24, 4TH P.M.

STATE OF MINNESOTA, County of KANABEC

At the corner location shown on the sketch:
On 07/ /2003 Set a Kanabec County Monument.

Kanabec County U.S. Survey Feet Coordinates
NAD 1983, HARN 1996 Adjustment
Obtained by RTK GPS Observation

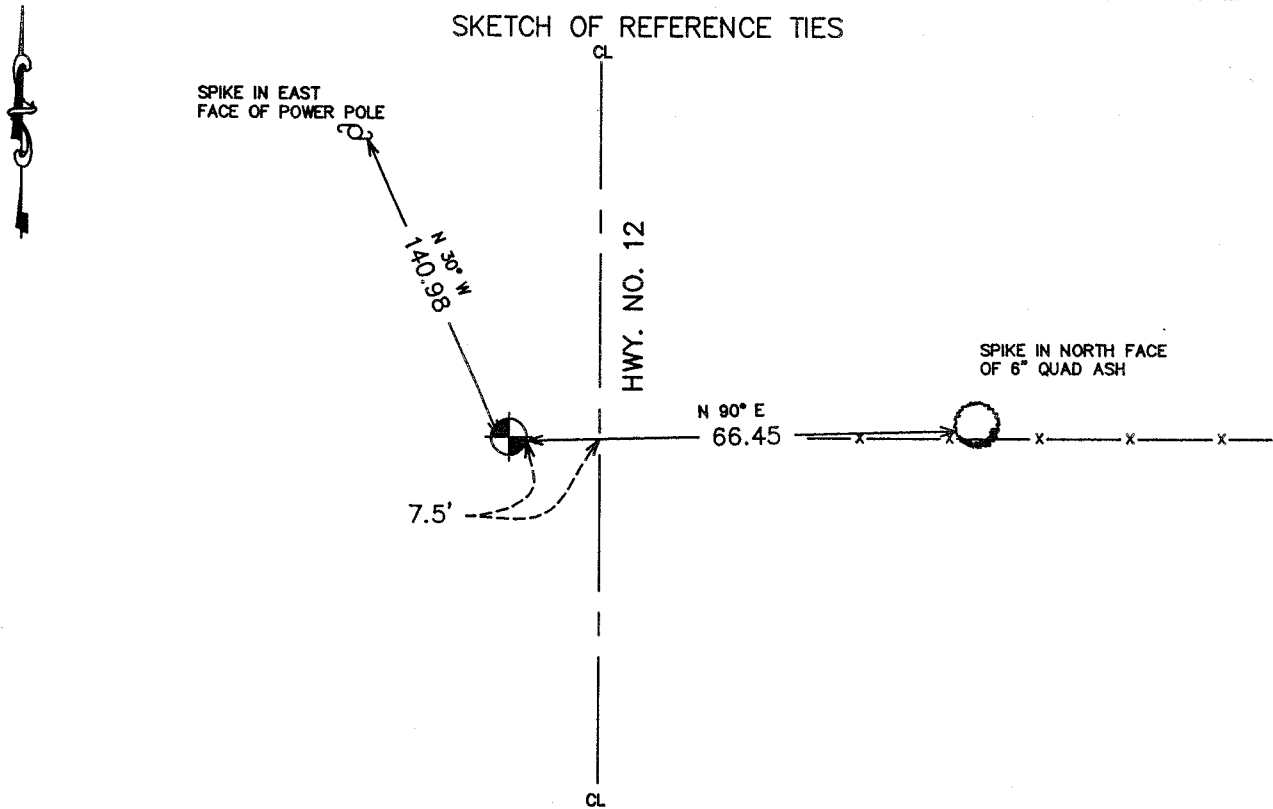
Northing= 140044.252

Easting= 380494.954

Note: NAD 1983, HARN 1996 Adjustment
coordinates are NOT compatible with
NAD 1983 coordinates

Note: 1 Meter=3937/1200 U.S. Survey Feet

SKETCH OF REFERENCE TIES



Statement of evidence relative to this corner location is on back of page.

I hereby certify that this document and the data contained herein was prepared by me or under my direct supervision.

Ernst J. Reid
Signature

7-17-04
Date

Registration No. 9808

Land Surveyor, Professional Engineer

County Surveyor, County Engineer

OFFICE OF THE COUNTY RECORDER

County of _____

I hereby certify that this document was filed in the County Recorder's office at _____ M. on the

_____ day of _____ A.D., 20 _____

County Recorder _____

BY _____ Deputy

DOCUMENT NO. _____

STATEMENT OF EVIDENCE

All of the original bearing trees are now gone. The County Highway Department set a PI at this corner location in 1977.

We made an excavation 15' by 15', 4 feet deep, 2 feet into the natural ground with a county backhoe. No evidence was found in the excavation.

The Highway PI is 1.71 feet south and 8.41 feet west of a line and split between the northwest and southwest corners of Section 29.

The PI location fits the lines of occupation and was accepted as the best available evidence of the original corner location.

(2003)

In July of 2003, we did a survey along the west line of Sections 17, 20 and 29, and around Section 29. This corner, along with all of the ties were gone. We reconstructed the survey done by M.B. Rude in 1978 for the Kanabec County Highway Department and reset this corner. We set a #7 rebar with an aluminum cap, and took new ties. We established Kanabec County coordinates on this monument using G.P.S. equipment.