

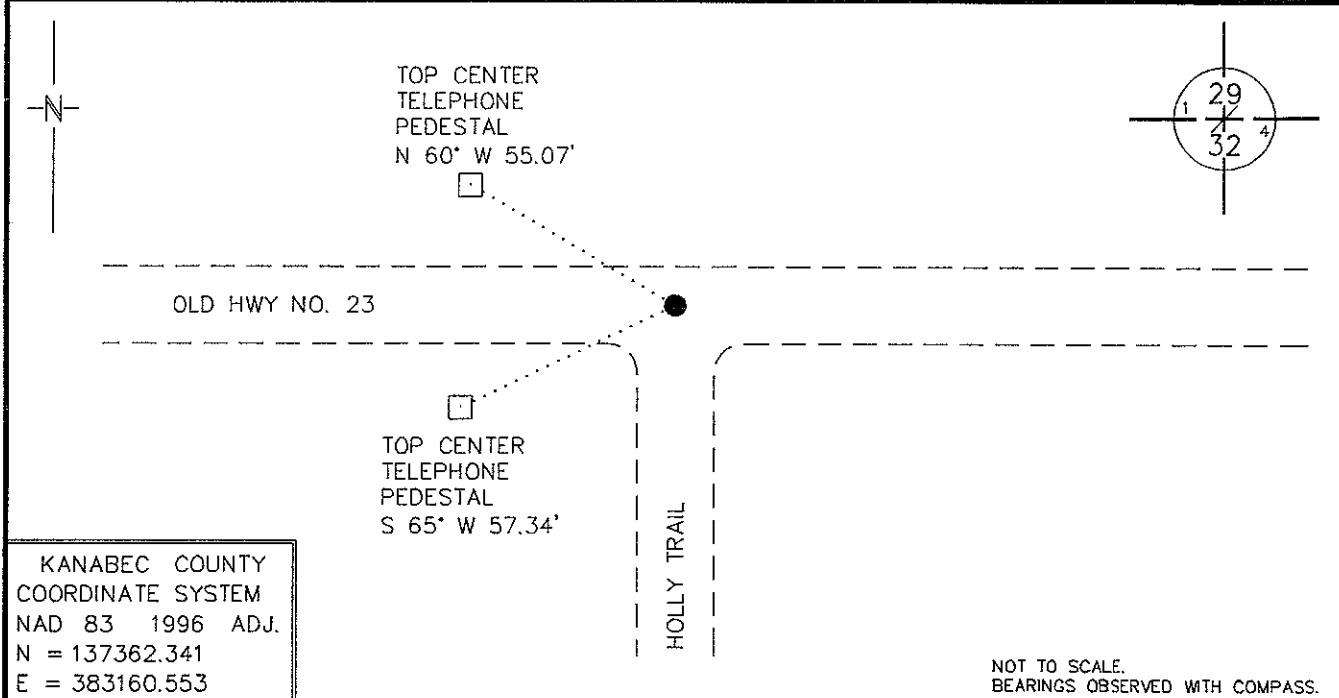
Index No. V-7

CERTIFICATE OF LOCATION OF GOVERNMENT CORNER

NORTH QUARTER Corner of Section 32, Township 39 N, Range 24 W
4TH Principal Meridian, State of Minnesota, County of KANABEC

At the corner location shown on the sketch:

- On 1/13/09 found a 1/2" INSIDE DIAMETER IRON PIPE AT THE CENTERLINE INTERSECTION
DATE
OF ROADS EAST-WEST AND SOUTH
 - left monument as found, lowered monument, removed monument (explain)
- On _____ Placed a _____
DATE



Statement of evidence for this corner location is on back of this page.

RAL JULY 2009
WMA00657.00.00.01

I certify that this document was researched and prepared by me or under my direct supervision.

SIGNATURE John D. Walker DATE 9/4/09 License Number 16098

Title: Land Surveyor Professional Engineer County Surveyor County Engineer

North Quarter Corner Section 32, Township 39 North, Range 24 West

- 1855 U.S. General Land Office notes obtained from the Secretary of State's Office states that a post was set for corner with the following bearing trees marked:
 12" Sugar, N 10° W 25 links (16.5 feet)
 6" Lind, S 50° E 15 links (9.90 feet)
- 1983 The Minnesota Department of Natural Resources, Bureau of Engineering survey crew searched in the Kanabec County Courthouse for survey information.
- 1983 The DNR Bureau of Engineering contacted the following Registered Land Surveyors for survey information: Morrel B. Rude and Donald Hansen.
 Also the Minnesota Department of Transportation in Brainerd was contacted.
- 1998 The DNR Bureau of Engineering contacted the following Land Surveyors for their information; Morrel B. Rude and Dale B. Anderson
- 2007 DNR Lands and Minerals contacted Ernie Rud, Kanabec County Surveyor for information.
- 1910 John Nelson, County Surveyor, in surveying section 32, ran from the south quarter corner to the north quarter corner and set the center section and 16th corners at proportional distances. He measured 80.22 chains (5294.52'). He doesn't state what was found or give any other measurements from the north quarter corner.
- 1967 DNR Bureau of Engineering set a spike in the intersection of roads east – west and south. They measured 2657.3' to the northeast corner section 32 and 2652.4' to the northwest corner. The corner was on line between the section corners.
- 2007 DNR Lands and Minerals survey crew found a ½" iron pipe at the intersection of roads east – west and south. The measurement to the northeast corner was 2655.57' and 2648.15' to the northwest corner. The distance to the southeast corner is 5294.37'. The iron pipe falls 0.16' south of the lost position and 3.71' west. The iron pipe was accepted as the corner and in January 2009 ties were taken to the iron pipe.

For more information on our survey in this area please contact MN DNR, Lands and Minerals, Survey Section, 1601 Minnesota Drive, Brainerd, MN 56401