

# CERTIFICATE OF LOCATION OF GOVERNMENT CORNER

NORTHEAST Corner of Section 31, Township 39, Range 24, 4TH P.M.  
 STATE OF MINNESOTA, County of KANABEC

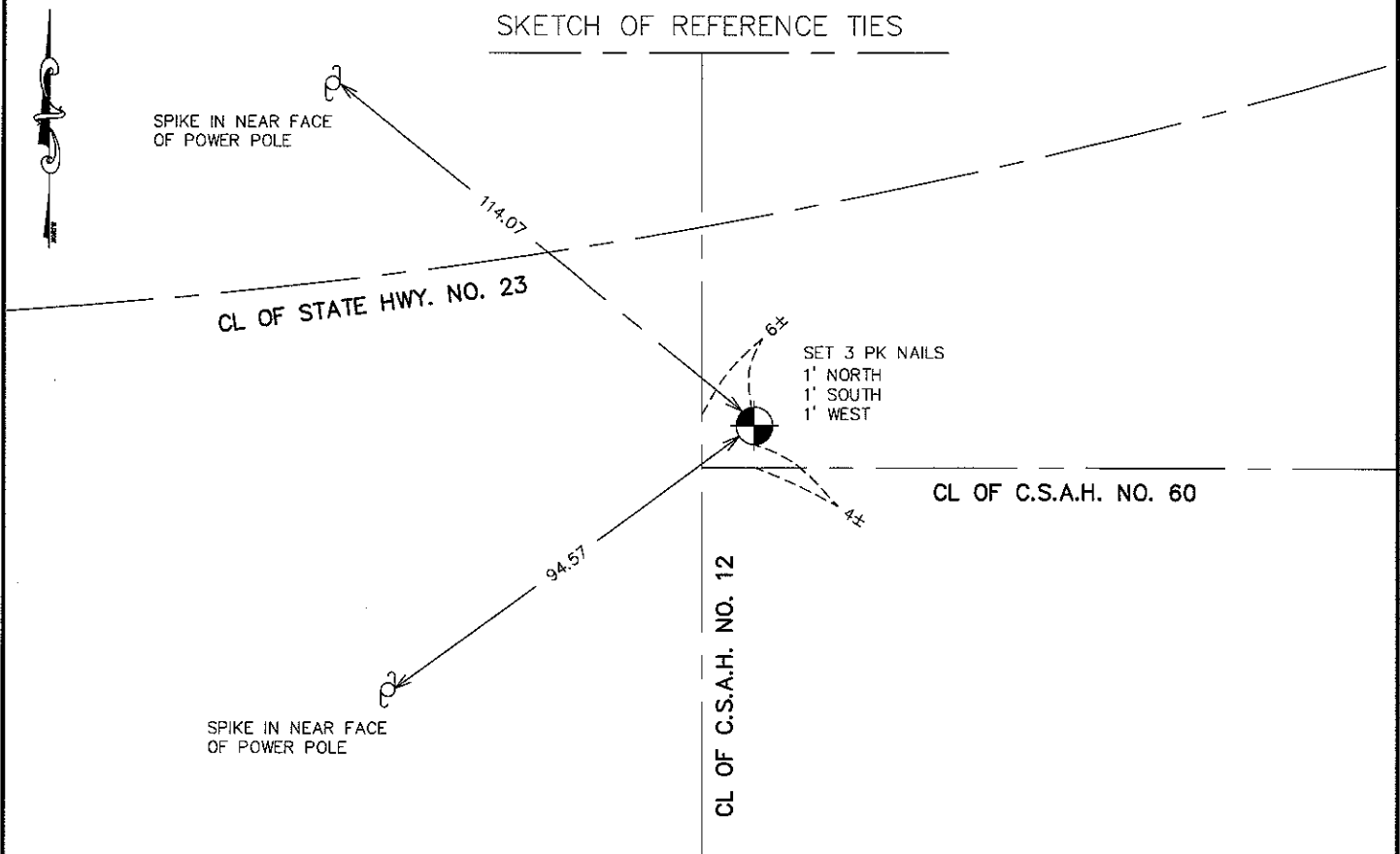
At the corner location shown on the sketch:  
 10/8/2009: FOUND A SMALL CAST IRON MONUMENT

Kanabec County U.S. Survey Feet Coordinates  
 NAD 1983, HARN 1996 Adjustment  
 Obtained by RTK GPS Observation

Northing= 137388.270  
 Easting= 380512.126

Note: NAD 1983, HARN 1996 Adjustment  
 coordinates are NOT compatible with  
 NAD 1983 coordinates  
 Note: 1 Meter=3937/1200 U.S. Survey Feet

## SKETCH OF REFERENCE TIES



Statement of evidence relative to this corner location is on back of page.

I hereby certify that this document and the data contained herein was prepared by me or under my direct supervision.

Ernest Rud 4-26-2010  
 Signature Date

Registration No. 9800

Land Surveyor,  Professional Engineer  
 County Surveyor,  County Engineer

### OFFICE OF THE COUNTY RECORDER

County of \_\_\_\_\_

I hereby certify that this document was filed in the County Recorder's office at \_\_\_\_\_ M. on the \_\_\_\_\_ day of \_\_\_\_\_ A.D., 20\_\_\_\_

County Recorder \_\_\_\_\_

BY \_\_\_\_\_ Deputy

**DOCUMENT NO.** \_\_\_\_\_

NE CORNER, SEC. 31, T39, R24

STATEMENT OF EVIDENCE

1855 U.S. GENERAL LAND OFFICE NOTES OBTAINED FROM THE SECRETARY OF STATE'S OFFICE STATES THAT A POST WAS SET FOR CORNER WITH THE FOLLOWING BEARING TREES MARKED:

- 8" JUNIPER, N55°W @ 20 LINKS (13.2 FT)
- 15" LIND, S55°E @ 60 LINKS (39.6 FT)
- 7" JUNIPER, N60°E @ 36 LINKS (23.76 FT)
- 6" JUNIPER, S35°W @ 30 LINKS (19.8 FT)

1983 THE MINNESOTA DEPARTMENT OF NATURAL RESOURCES, BUREAU OF ENGINEERING SURVEY CREW SEARCHED THE KANABEC COUNTY COURTHOUSE FOR SURVEY INFORMATION.

1983 THE DNR BUREAU OF ENGINEERING CONTACTED THE FOLLOWING REGISTERED LAND SURVEYORS FOR SURVEY INFORMATION: MORREL B. RUDE AND DONALD HANSON. ALSO THE MINNESOTA DEPARTMENT OF TRANSPORTATION IN BRAINERD WAS CONTACTED.

1998 THE DNR BUREAU OF ENGINEERING CONTACTED THE FOLLOWING REGISTERED LAND SURVEYORS FOR THEIR INFORMATION: MORREL B. RUDE AND DALE B. ANDERSON.

2007 DNR LANDS AND MINERALS CONTACTED ERNIE RUD, KANABEC COUNTY SURVEYOR FOR INFORMATION.

1890s ON PAGES 168 AND 202 OF THE SURVEYOR'S RECORD BOOK ARE SURVEYS IN SEC. 32. THE ONE ON PAGE 202 WAS DONE BY T.B. VICKORY AND THE OTHER ONE IS WRITTEN USING THE SAME WORDS "THE ABOVE SURVEY MADE IN THE FOLLOWING MANNER" AND IS PROBABLY BY THE SAME PERSON. PAGE 168 SHOWS A ROAD RUNNING EAST 20 CHAINS FROM A POINT 20 CHAINS SOUTH OF THE NW CORNER OF SEC. 32. THE MAP SHOWS A DISTANCE OF 20 CHAINS TO THE WEST 1/4 CORNER OF SEC. 32. PAGE 202 SHOWS A ROAD BETWEEN SECS. 31 AND 32 AND A DISTANCE OF 80 CHAINS BETWEEN SECTION CORNERS.

1901 JOHN NELSON REESTABLISHED THIS CORNER AND HIS BEARING TREES ARE NOW GONE.

1910 JOHN NELSON, COUNTY SURVEYOR, IN SURVEYING SEC. 32, NEVER WENT TO THE WEST LINE OF THE SECTION.

1942 MNDOT RIGHT OF WAY MAPS SHOW CORNER IN THE INTERSECTION OF ROADS NORTH, SOUTH, EAST AND WEST,

1967 DNR BUREAU OF ENGINEERING SET A SPIKE IN THE INTERSECTION OF ROADS NORTH, SOUTH, EAST AND WEST. THE MEASURED 2652.4' TO THE N 1/4 CORNER OF SEC. 32 AND 2653.7' TO THE W 1/4 CORNER.

1978 M.B. RUDE EXCAVATED AND 7 FEET DOWN HE FOUND AN 8" POST WITH THE TOP BURNED OFF. HE ACCEPTED THIS POST.

2007 DNR LANDS AND MINERALS SURVEY CREW FOUND A 1/2" IRON PIPE WITH THE REMAINS OF AN ORANGE CAP IN IT AT THE CENTERLINE OF THE EXTENSION OF ROADS EAST AND WEST. THE PIPE IS ABOUT 8' EAST OF THE CENTERLINE OF ROAD NORTH-SOUTH. THE MEASUREMENT TO THE N 1/4 CORNER OF SEC. 32 IS 2648.15' AND THE W 1/4 CORNER IS 2654.69'. THERE IS A METAL ATTRACTION THAT SHOULD BE CHECKED OUT 2.6' SOUTH AND 5.95' WEST OF THE IRON PIPE. THE IRON PIPE WAS USED AS THE CORNER AT THIS TIME.

2009 E.G. RUD AND SONS REMOVED THE IRON PIPE AND HAND EXCAVATED, FINDING THE C.I.M. SET BY M.B. RUDE AND ONE REMAINING TIE FIT. NEW TIES WERE TAKEN AND KANABEC COUNTY COORDINATES WERE ESTABLISHED ON THIS POSITION USING G.P.S. EQUIPMENT.