

CERTIFICATE OF LOCATION OF GOVERNMENT CORNER

East Quarter Corner of Section 5, Township 39, Range 24,
4th Principal Meridian, Kanabec County, State of Minnesota

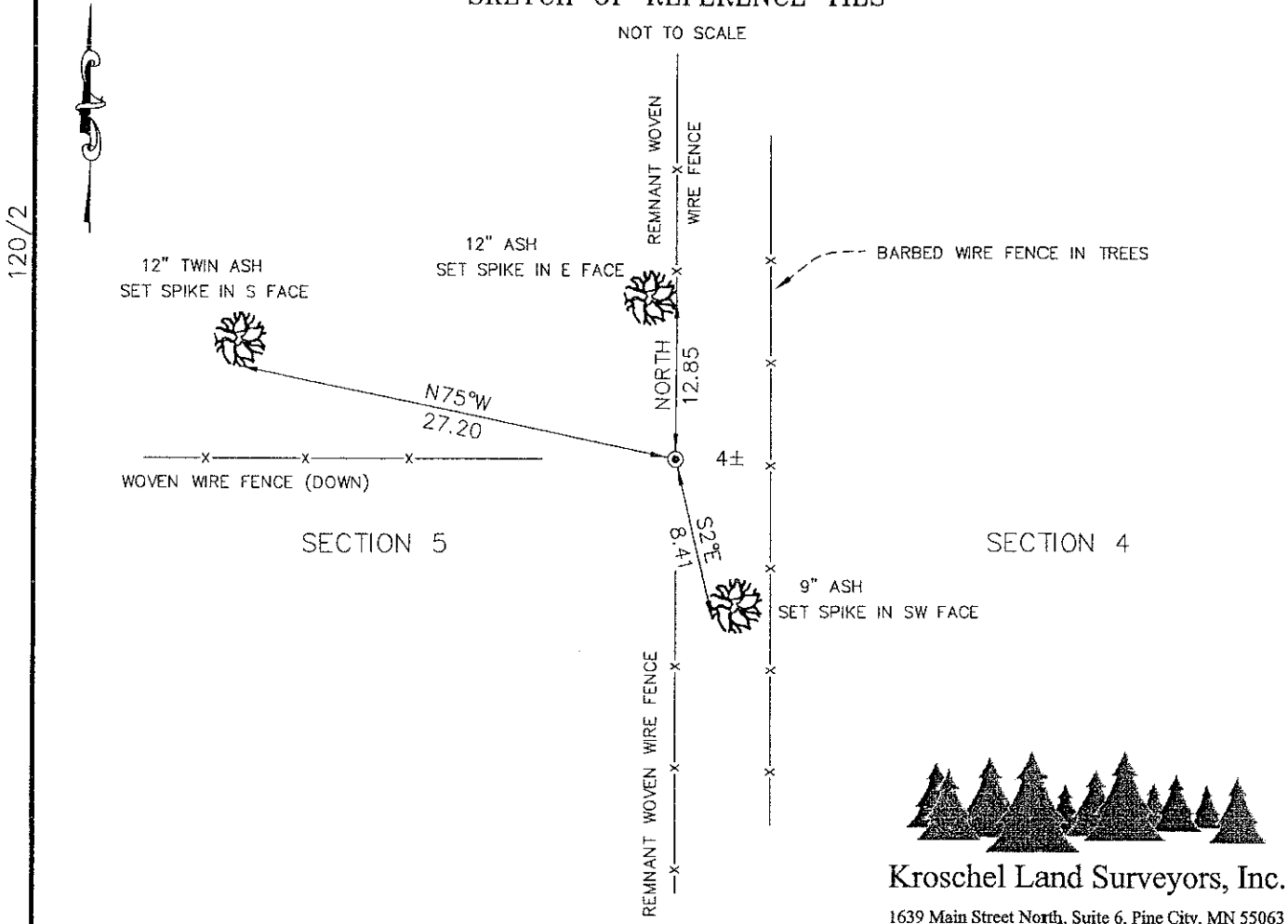
At the corner location shown on the sketch:
On 12/01/2009 found a 13" diameter wood post
and set a 7/8" x 36" Rebar Monument with
Aluminum Cap in its place.

Kanabec County U.S. Survey Feet Coordinates
NAD 1983, HARN 1996 Adjustment
Obtained by RTK GPS observation
Northing: 161136.6162
Easting: 385736.7385

Note: NAD 1983, HARN 1996 Adjustment
coordinates are NOT compatible with
NAD 1983 coordinates
Note: 1 Meter = 3937/1200 U.S. Survey Feet

SKETCH OF REFERENCE TIES

NOT TO SCALE



Kroschel Land Surveyors, Inc.

1639 Main Street North, Suite 6, Pine City, MN 55063
Phone: 320-629-3267 Fax: 320-629-0176

Statement of evidence relative to this corner location is on back of page.

I hereby certify that this document and
the data contained herein was prepared
by me or under my direct supervision.

[Signature] 12-29-2009
Signature Date

License No. 44490

- Land Surveyor Professional Engineer
 County Surveyor County Engineer

OFFICE OF THE COUNTY RECORDER
County of Kanabec

I hereby certify that this document was filed in the
County Recorders office at _____ .M. on the
_____ day of _____ A.D., 20____

County Recorder _____
By _____, Deputy

DOCUMENT NO. _____

Statement of Evidence:

In October of 1855, Deputy Surveyor Silas Barnard set a post to mark the East Quarter Corner of Section 5, Township 39 North, Range 24 West, 4th Principal Meridian.

Reference ties were taken to:

- 7 inch Tamarack at South 10 degrees East a distance of 15 links
- 8 inch Tamarack at North 85 degrees West a distance of 10 links

All of the original Government corner evidence was searched for. None was found.

1902—County Surveyor John Nelson made a survey for H.J. McKusick in Sections 4 and 9. He found the government post at the West Quarter corner of Section 4 and measured south a distance of 119.82 chains to the Southwest corner of Section 9. He set the Southwest corner of Section 4 at a prorated distance of 39.94 chains.

Chas. Handschu, RLS 464 made a survey for Adolf Larson in Section 5. There is no date on the survey. The survey shows a Large Corner Fence Post at the East Quarter corner of Section 5 and a distance of 2686.6 feet to the Northeast corner of Section 5.

In December 2009, a survey was made around Section 5, Township 39 North, Range 24 West, 4th Principal Meridian for Gary & Buffy Udstuen to locate existing monuments, lines of occupation and establish search areas.

On 12/1/2009 we made a search with a magnetic locator. We found a 13" diameter by 30" tall wood post with a flat bottom at the intersection of old fences. No other evidence was found. I set a 7/8" x 36" Rebar monument with Aluminum Cap in place of the found wood post. Established reference ties and assigned Kanabec County coordinates. We measure 2686.85 feet from the wood post to the Northeast corner of Section 5. We measure 2648.74 feet from the wood post to the Southeast corner of Section 4.

This location is determined to be the best available evidence of the original corner location.



Kroschel Land Surveyors, Inc.

1639 Main Street North, Suite 6, Pine City, MN 55063
Phone: 320-629-3267 Fax: 320-629-0176