

CERTIFICATE OF LOCATION OF GOVERNMENT CORNER

NORTH 1/4 Corner of Section 9, Township 39 N, Range 24 W, 4th P.M.

STATE OF MINNESOTA, County of KANABEC

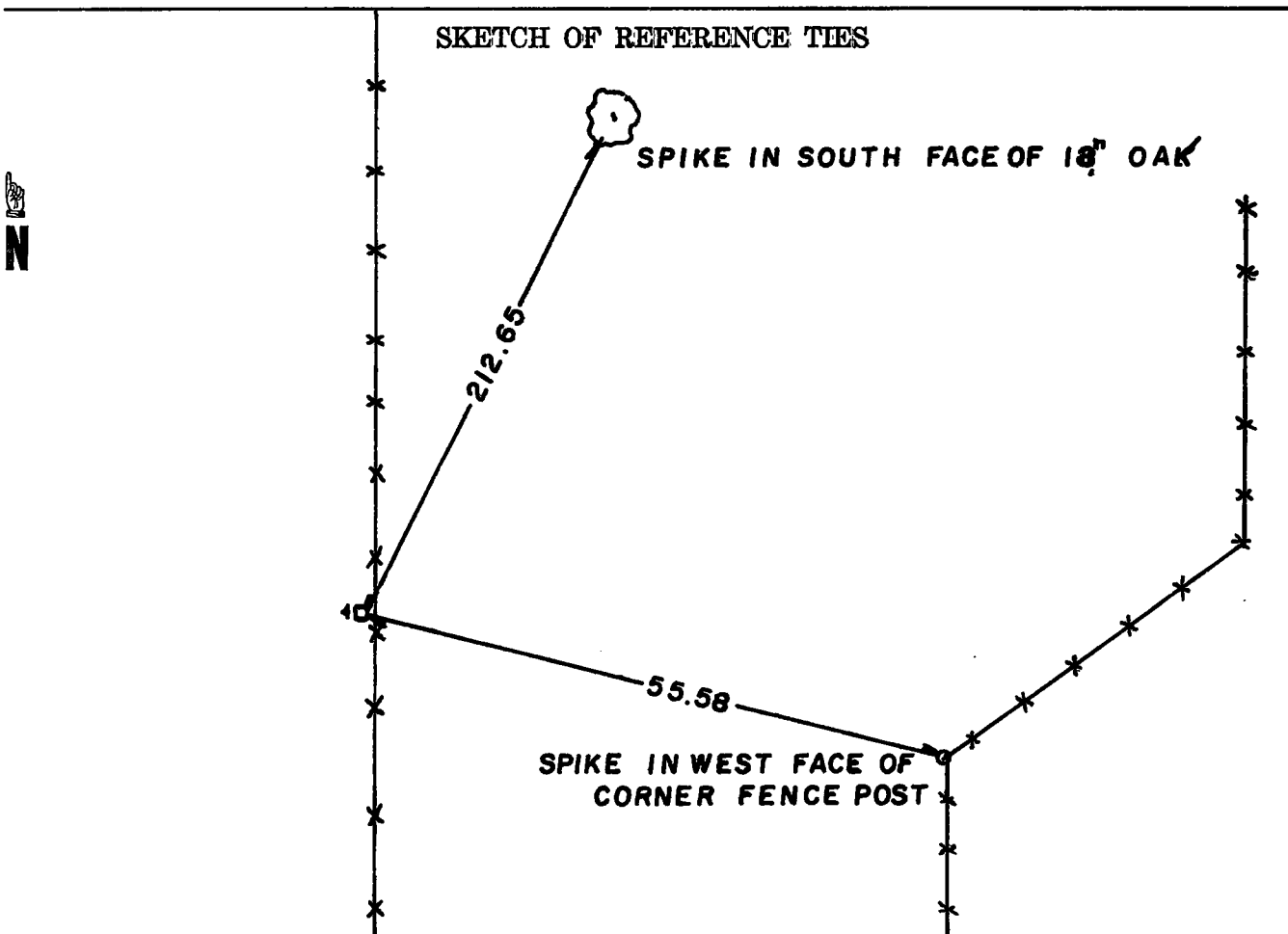
At the corner location shown on the sketch

On _____ found a _____
Date

left monument as found, lowered monument, removed monument (explain)
 On 10/23/78 placed a 4" BY 17" CAST ALUMINUM MONUMENT AND
Date

A STEEL FENCE POST ON WEST SIDE OF MONUMENT

SKETCH OF REFERENCE TIES



Statement of evidence relative to this corner location is on back of page.

I hereby certify that this document and the data contained herein was prepared by me or under my direct supervision.

Marshall B. Beale 12-8-78
Signature Date

Registration No. 8195

Land Surveyor, Professional Engineer
 County Surveyor, County Engineer

OFFICE OF THE REGISTER OF DEEDS

County of Kanabec

I hereby certify that this document was filed in the Register of Deeds office at 3 P. M. on the

29 day of December A.D., 1978

County Recorder Velma J. Besser
Register of Deeds

By _____, Deputy

DOCUMENT NO. _____

STATEMENT OF EVIDENCE

All of the original bearing trees are now gone.
Mr. John Nelson, the County Surveyor, set a sandstone marked South Quarter in 1902, by proportional distance and on line between the northwest and northeast corners.

We found the northwest corner of Section 9 set by Nelson and ran a line to the centerline of the north-south road and fence line east at the northeast corner.

We placed the north quarter corner of Section 9 on line a and at the old north-south fence line which was accepted as the best available evidence of Nelson's corner. The distance to the northwest corner is 2613.6 feet and the distance that John Nelson had in 1902 was 2613.6 feet.

We excavated a 20 by 30 foot hole with the backhoe at this location, but did not find Nelson's sandstone.

We set a 4' by 17' Cast Aluminum Monument with magnets and steel post on west side.