

# CERTIFICATE OF LOCATION OF GOVERNMENT CORNER

NORTHWEST Corner of Section 9, Township 39, Range 24, 4TH P.M.

STATE OF MINNESOTA, County of KANABEC

At the corner location shown on the sketch:  
On 06/ /2004 Found a Kanabec County Monument.

Kanabec County U.S. Survey Feet Coordinates  
NAD 1983, HARN 1996 Adjustment  
Obtained by RTK GPS Observation

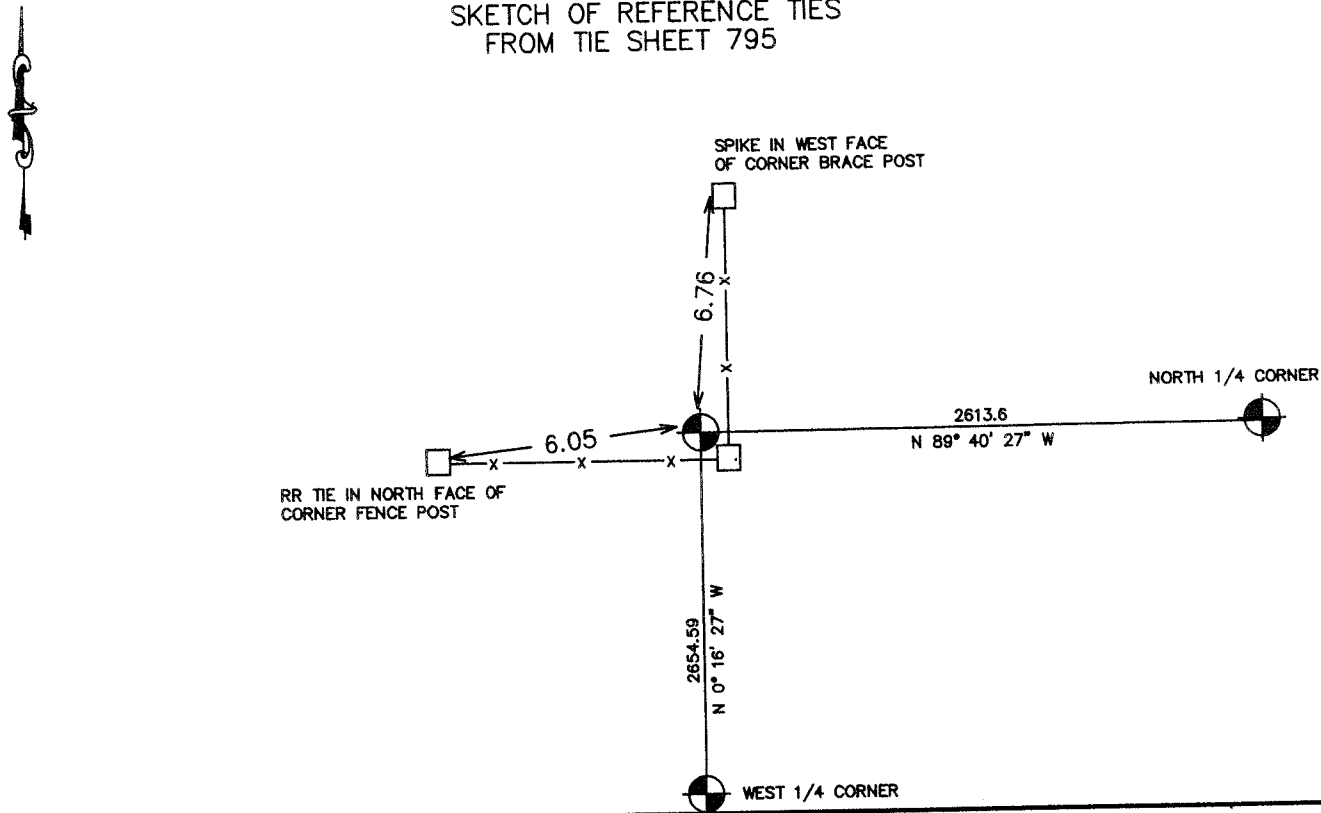
Northing= 158488.65

Easting= 385677.45

Note: NAD 1983, HARN 1996 Adjustment  
coordinates are NOT compatible with  
NAD 1983 coordinates

Note: 1 Meter=3937/1200 U.S. Survey Feet

### SKETCH OF REFERENCE TIES FROM TIE SHEET 795



Statement of evidence relative to this corner location is on back of page.

I hereby certify that this document and the data contained herein was prepared by me or under my direct supervision.

Ernst Rud  
Signature

6-22-2004  
Date

Registration No. 9808

Land Surveyor,      [ ] Professional Engineer

[ ] County Surveyor,      [ ] County Engineer

### OFFICE OF THE COUNTY RECORDER

County of \_\_\_\_\_

I hereby certify that this document was filed in the County Recorder's office at \_\_\_\_\_ M. on the \_\_\_\_\_ day of \_\_\_\_\_ A.D., 20\_\_\_\_

County Recorder \_\_\_\_\_

BY \_\_\_\_\_ Deputy

DOCUMENT NO. \_\_\_\_\_

STATEMENT OF EVIDENCE  
(TIE SHEET 515)

In April of 1902, John Nelson set a sandstone monument with Section #'s 4, 5, 8, and 9 cut into the top.

On October 24, 1978, we found John Nelson's sandstone monument with Section numbers 4, 5, 8, and 9 cut into the top at an old fence corner and set a steel post on south to mark the sandstone location.

(2004)

On June 3, 2004 E.G. Rud & Sons, ran a survey around Section 9 and found this stone. We took additional ties and established Kanabec County Coordinates on this corner.