

CERTIFICATE OF LOCATION OF GOVERNMENT CORNER

WEST QUARTER Corner of Section 9, Township 39, Range 24, 4TH P.M.
 STATE OF MINNESOTA, County of KANABEC

At the corner location shown on the sketch:
 On 06/ /2004 Set a Kanabec County Monument.

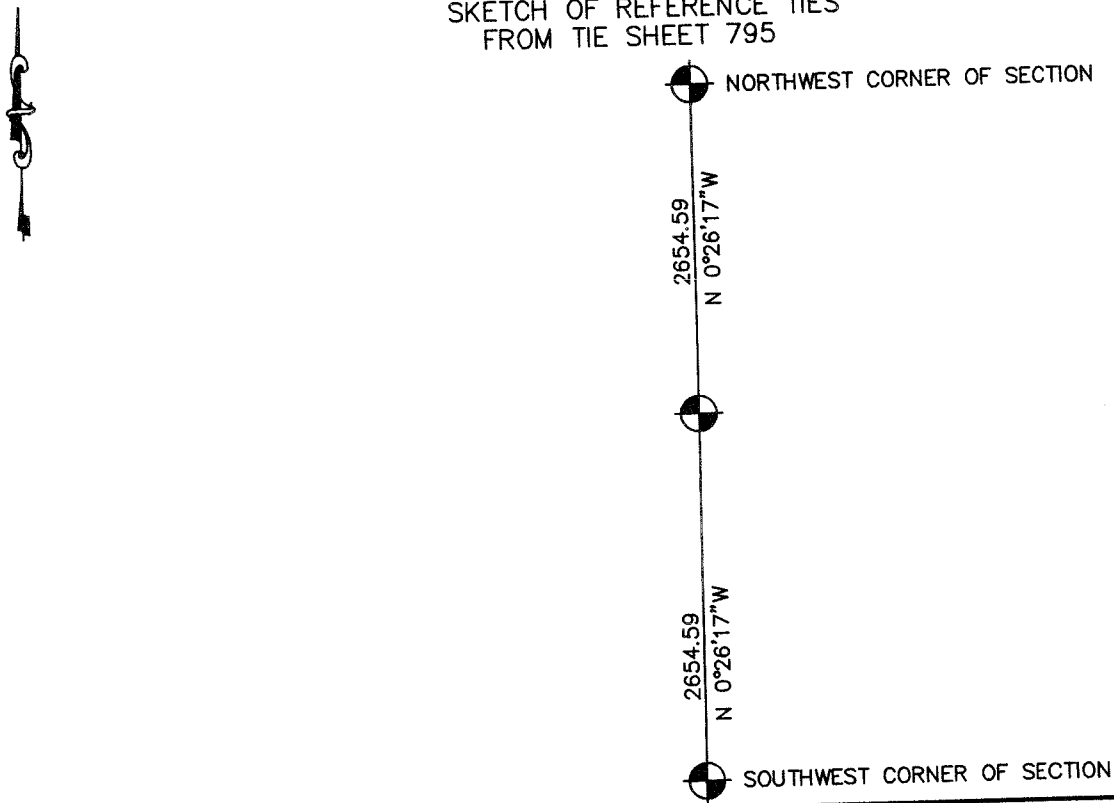
Kanabec County U.S. Survey Feet Coordinates
 NAD 1983, HARN 1996 Adjustment
 Obtained by RTK GPS Observation

Northing= 155833.92

Easting= 385671.10

Note: NAD 1983, HARN 1996 Adjustment
 coordinates are NOT compatible with
 NAD 1983 coordinates
 Note: 1 Meter=3937/1200 U.S. Survey Feet

SKETCH OF REFERENCE TIES FROM TIE SHEET 795



Statement of evidence relative to this corner location is on back of page.

I hereby certify that this document and the data contained herein was prepared by me or under my direct supervision.

Ernest J. Rud
Signature

6-22-2004
Date

Registration No. 9808

Land Surveyor, [] Professional Engineer

[] County Surveyor, [] County Engineer

OFFICE OF THE COUNTY RECORDER

County of _____

I hereby certify that this document was filed in the County Recorder's office at _____ M. on the _____ day of _____ A.D., 20____

County Recorder _____

BY _____ Deputy

DOCUMENT NO. _____

STATEMENT OF EVIDENCE
(TIE SHEET 515)

All of the original bearing trees are gone. In 1902, John Nelson, the County Surveyor, used a line and split between the southwest and northwest corners of Section 9, but did not reset this corner.

This corner falls into low pasture land, we excavated a 20' by 20' hole with the backhoe, but found no evidence.

We set this corner by single proportional measurement between the southwest and northwest corners of Section 9.

We set a 4" by 17" cast aluminum monument one foot below the surface and marked it with a steel post up 3 feet on the north side of the monument.

No tie points were available.

(2004)

On June 3, 2004, JR and JP, of E.G. Rud & Sons, tried to recover this monument. We excavated with a shovel and hit concrete fill. We were unable to set or recover this monument.

We set Kanabec County Coordinates on this corner by lost methods, on a line equidistant from the Northwest to the Southwest corners of Section 9.