

# CERTIFICATE OF LOCATION OF GOVERNMENT CORNER

SOUTHWEST Corner of Section 9, Township 39, Range 24, 4TH P.M.

STATE OF MINNESOTA, County of KANABEC

At the corner location shown on the sketch:  
On 06/ /2004 Found a Kanabec County Monument.

Kanabec County U.S. Survey Feet Coordinates  
NAD 1983, HARN 1996 Adjustment  
Obtained by RTK GPS Observation

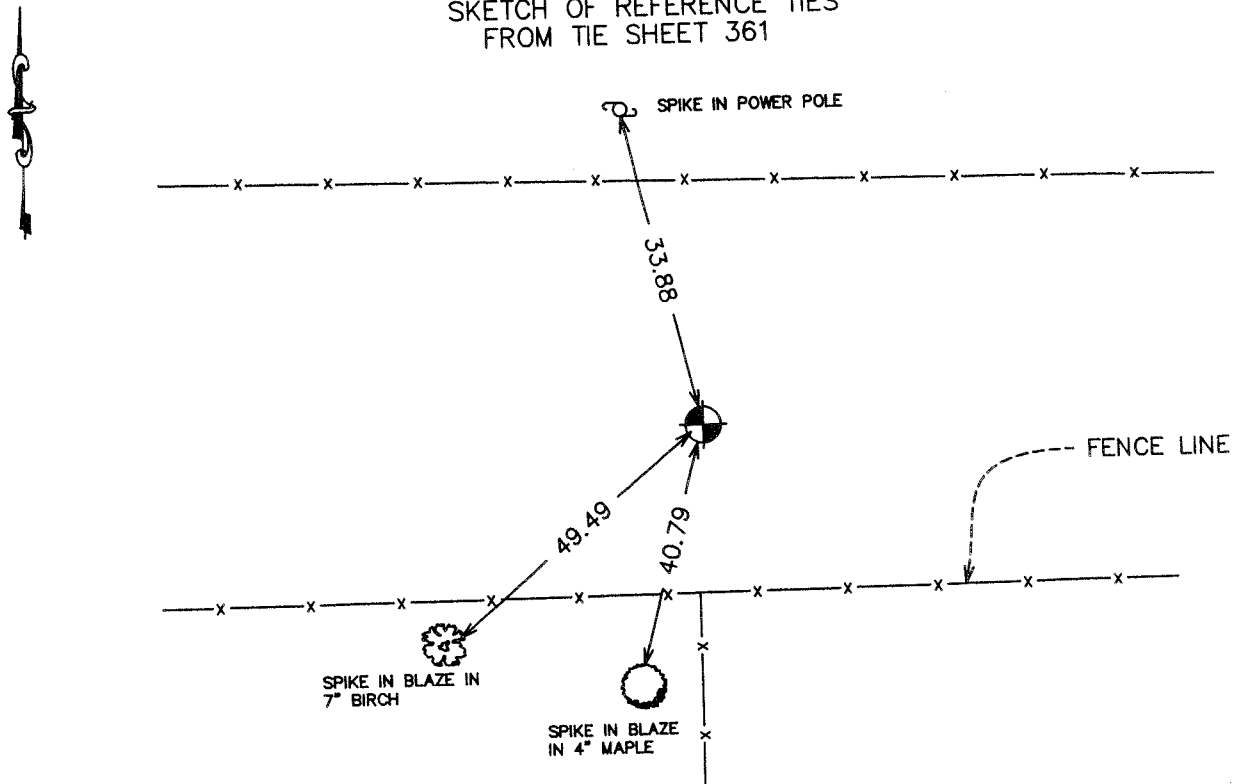
Northing= 153179.20

Easting= 385664.75

Note: NAD 1983, HARN 1996 Adjustment  
coordinates are NOT compatible with  
NAD 1983 coordinates

Note: 1 Meter=3937/1200 U.S. Survey Feet

### SKETCH OF REFERENCE TIES FROM TIE SHEET 361



Statement of evidence relative to this corner location is on back of page.

I hereby certify that this document and the data  
contained herein was prepared by me or under  
my direct supervision.

Ernst Schubert  
Signature

6-22-2004  
Date

Registration No. 9808

Land Surveyor, [ ] Professional Engineer

[ ] County Surveyor, [ ] County Engineer

### OFFICE OF THE COUNTY RECORDER

County of \_\_\_\_\_

I hereby certify that this document was filed in  
the County Recorder's office at \_\_\_\_\_ M. on the  
\_\_\_\_\_ day of \_\_\_\_\_ A.D., 20 \_\_\_\_\_

County Recorder \_\_\_\_\_

BY \_\_\_\_\_ Deputy

DOCUMENT NO. \_\_\_\_\_

STATEMENT OF EVIDENCE  
(TIE SHEET 361)

Set Kanbec County Monument in area where we found the old wood stake which fit centerline of the road and occupation lines well.

We figure that the stake was set by John Nelson in 1902 for the corner.

(2004)

On June 3, 2004 E.G. Rud & Sons, ran a survey around Section 9 and found this monument. We established Kanabec County Coordinates on this corner using G.P.S. equipment.