

3924106

# CERTIFICATE OF LOCATION OF GOVERNMENT CORNER

EAST QUARTER Corner of Section 17, Township 39, Range 24, 4TH P.M.

STATE OF MINNESOTA, County of KANABEC

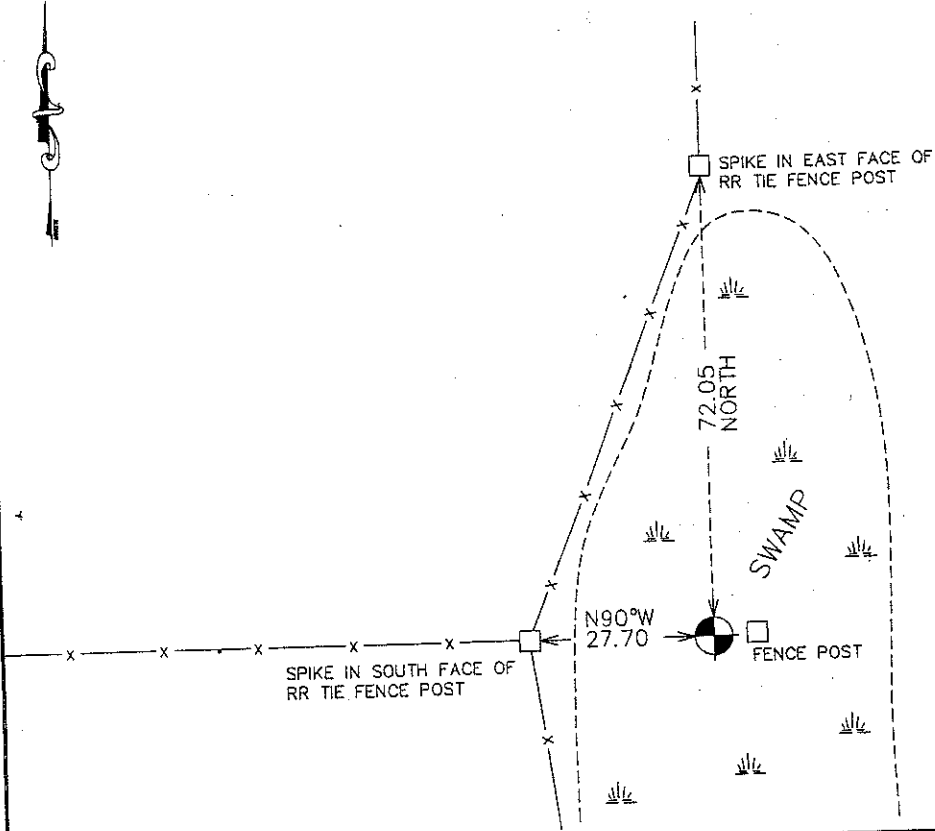
At the corner location shown on the sketch:  
SET AN 1/2" X 4' IRON PIPE WITH AN ALUMINUM CAP IN SWAMP WITH FENCE POST ON EAST SIDE

Kanabec County U.S. Survey Feet Coordinates  
NAD 1983, HARN 1996 Adjustment  
Obtained by RTK GPS Observation

Northing= 150600.61  
Easting= 385671.58

Note: NAD 1983, HARN 1996 Adjustment coordinates are NOT compatible with NAD 1983 coordinates  
Note: 1 Meter=3937/1200 U.S. Survey Feet

## SKETCH OF REFERENCE TIES



Statement of evidence relative to this corner location is on back of page.

I hereby certify that this document and the data contained herein was prepared by me or under my direct supervision.

Ernest H. Rud  
Signature

12-21-2010  
Date

Registration No. 9808

- Land Surveyor,       Professional Engineer
- County Surveyor,     County Engineer

## OFFICE OF THE COUNTY RECORDER

County of \_\_\_\_\_

I hereby certify that this document was filed in the County Recorder's office at \_\_\_\_\_ M. on the \_\_\_\_\_ day of \_\_\_\_\_ A.D., 20\_\_\_\_

County Recorder \_\_\_\_\_

BY \_\_\_\_\_ Deputy

DOCUMENT NO. \_\_\_\_\_

E1/4 CORNER, SEC. 17, T39, R24

**STATEMENT OF EVIDENCE**

**THE ORIGINAL CORNER POST WAS SET BY DEPUTY SURVEYOR SILAS BARNARD ON OCT. 2, 1855 AND 2 BEARING TREES ESTABLISHED AS FOLLOWS:**

**8" TAMARAC BEARING S13°W @ 40 LINKS**

**7" TAMARAC BEARING EAST @ 15 LINKS**

**NO VISIBLE EVIDENCE REMAINS TODAY FOR THE CORNER OR BEARING TREES. THIS CORNER FELL I CHAIN SOUTH OF THE EDGE OF A SWAMP.**

**ON PAGE 12 OF SURVEY BOOK 2 OF 2 IN KANABEC COUNTY OFFICES, JOHN NELSON RECORDED A SURVEY OF SECS. 15, 16, 21 AND 22 WHICH WAS DONE ON MAY 5-16, 1902. JOHN DID NOT FIND OR SET A POST AT THIS LOCATION. JOHN MEASURED THE EAST LINE OF SEC. 17 TO BE 78.39 CHAINS OR 5173.74 FEET. TODAY WE MEASURE THIS LINE TO BE 5247.23 FEET.**

**THIS CORNER FALLS IN A SWAMP WITH A GOOD FENCE RUNNING WEST AND NORTH FROM THE EDGE OF THE SWAMP. CLARENCE DOCHOW (OWNER OF SE1/4 OF SEC. 16) AND ROBERT SAGY (OWNER OF E1/2 OF NE1/4 OF SEC. 16) BOTH TESTIFY THAT THESE FENCES WERE ON THE PROPERTY LINES AND CLARENCE ALSO STATED THAT THE CORNER WAS ACTUALLY 20-25 FEET EAST FROM THE RR TIE CORNER POST.**

**WE SET THIS CORNER IN LINE BETWEEN THE NE AND SE CORNERS OF SEC. 17 AND ON THE EASTERLY EXTENSION OF THE EAST-WEST FENCE LINE. THIS FELL IN THE SWAMP, 27 FEET EAST OF THE RR TIE FENCE POST AND 70 FEET SOUTH OF THE EDGE OF THE SWAMP. THIS IS CONSISTENT WITH GOV'T NOTES AND CLARENCE'S TESTIMONY**

**ON NOV. 23, 2010 E.G. RUD AND SONS, INC. SET A 1/2" X 4' IRON PIPE WITH AN ALUMINUM CAP, TIES WERE TAKEN AND KANABEC COUNTY COORDINATES WERE ESTABLISHED ON THIS POSITION.**